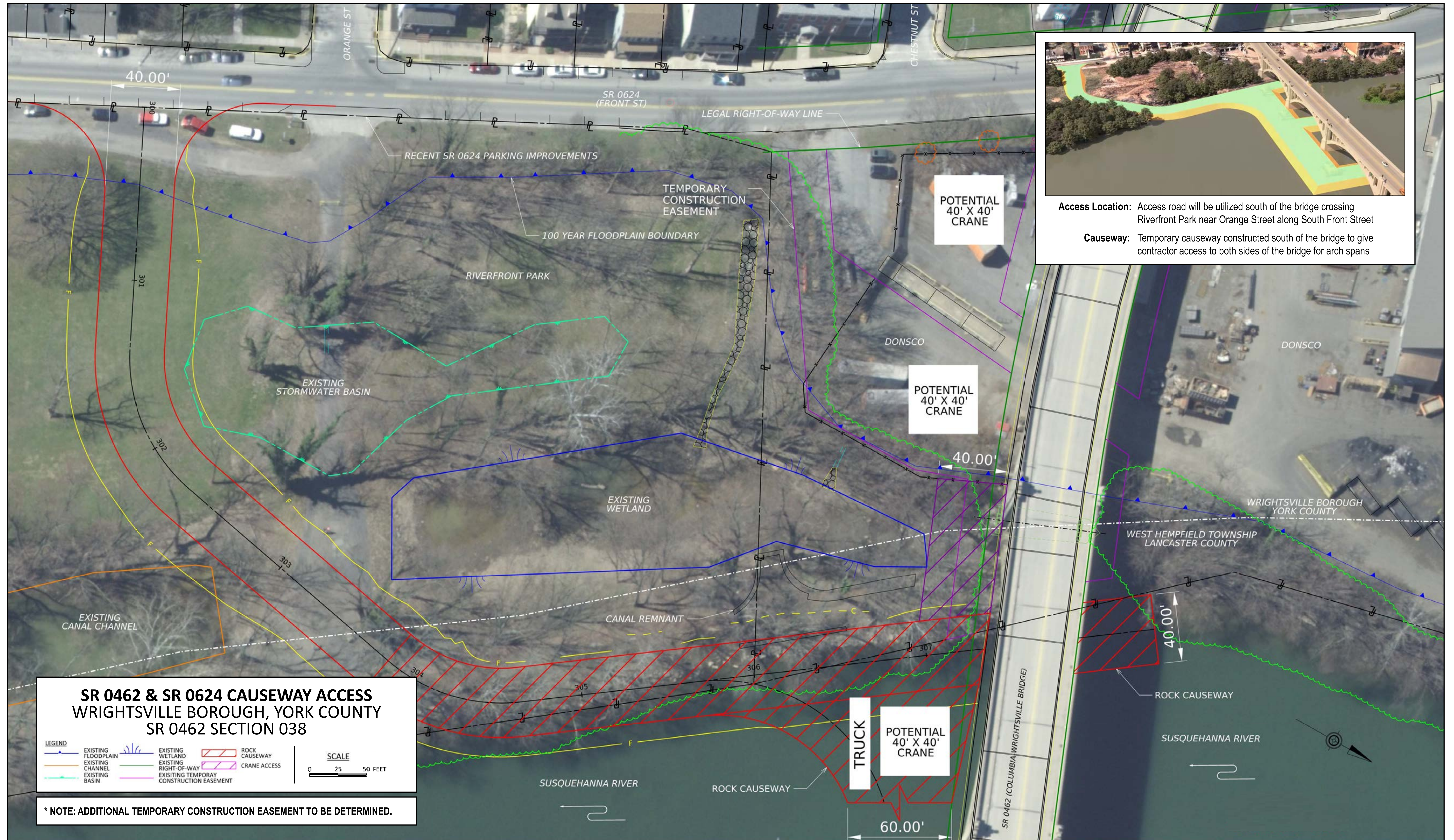




COLUMBIA-WRIGHTSVILLE BRIDGE REHABILITATION PROJECT

VETERANS MEMORIAL BRIDGE OVER THE SUSQUEHANNA RIVER



Access Location: Access road will be utilized south of the bridge crossing Riverfront Park near Orange Street along South Front Street

Causeway: Temporary causeway constructed south of the bridge to give contractor access to both sides of the bridge for arch spans