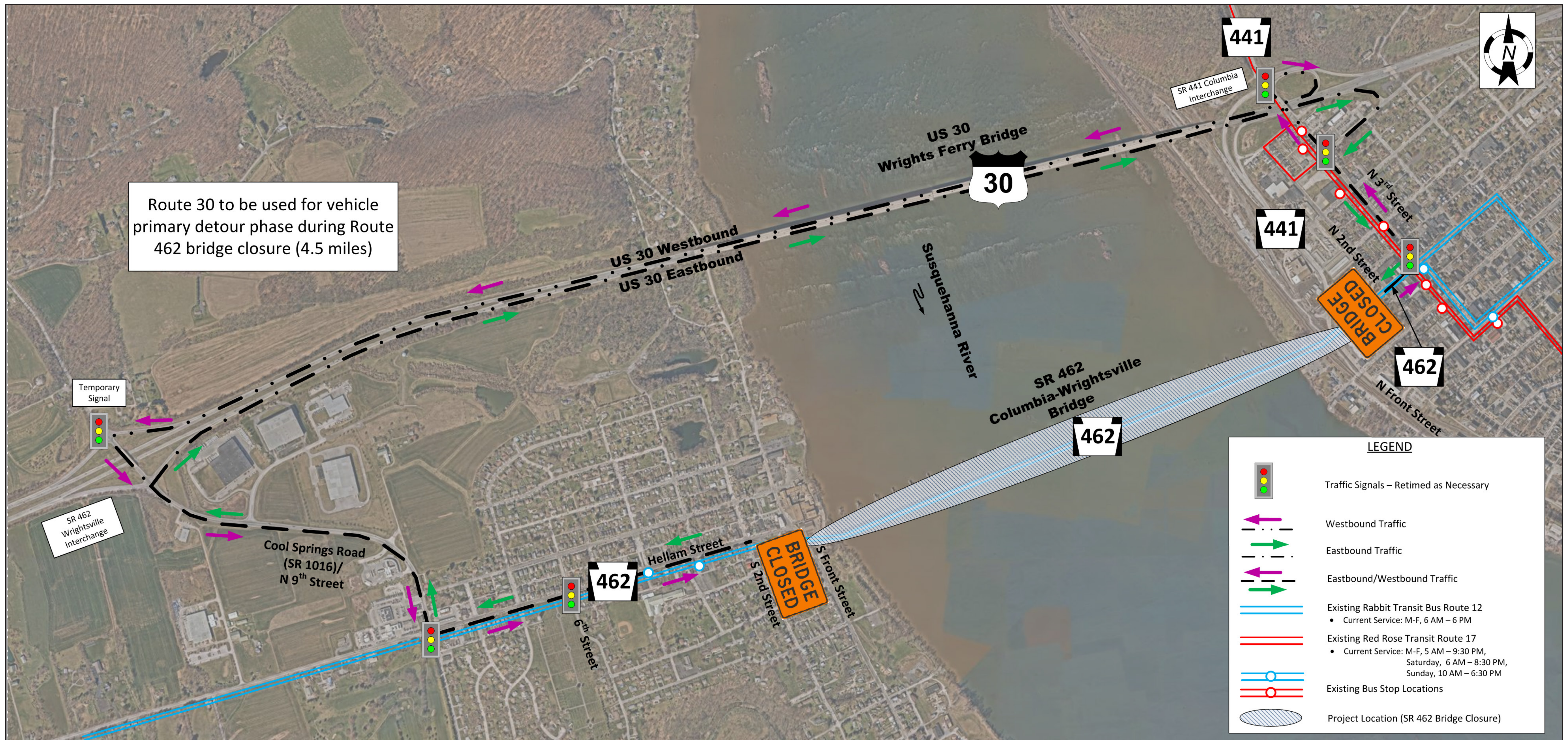




COLUMBIA-WRIGHTSVILLE BRIDGE REHABILITATION PROJECT

VETERANS MEMORIAL BRIDGE OVER THE SUSQUEHANNA RIVER

DETOUR ROUTE



The anticipated constructability methods will not safely allow pedestrians and bicycles to be maintained on the Route 462 bridge during rehabilitation. To mitigate the bridge closure period, PennDOT is coordinating with Rabbit Transit to keep Bus Route 12 operating between Columbia and Wrightsville. This coordination may require modifications to bus routes and schedules, the addition of shuttle buses, bus stop locations, the addition of bus bike racks, extended hours of operations on weekdays and additional weekend service as warranted. The additional transit services, including adding a shuttle bus (if necessary), would be paid for by PennDOT project funding.

Coordination is also occurring with Red Rose Transit regarding connections remaining in place between the two transit agencies.