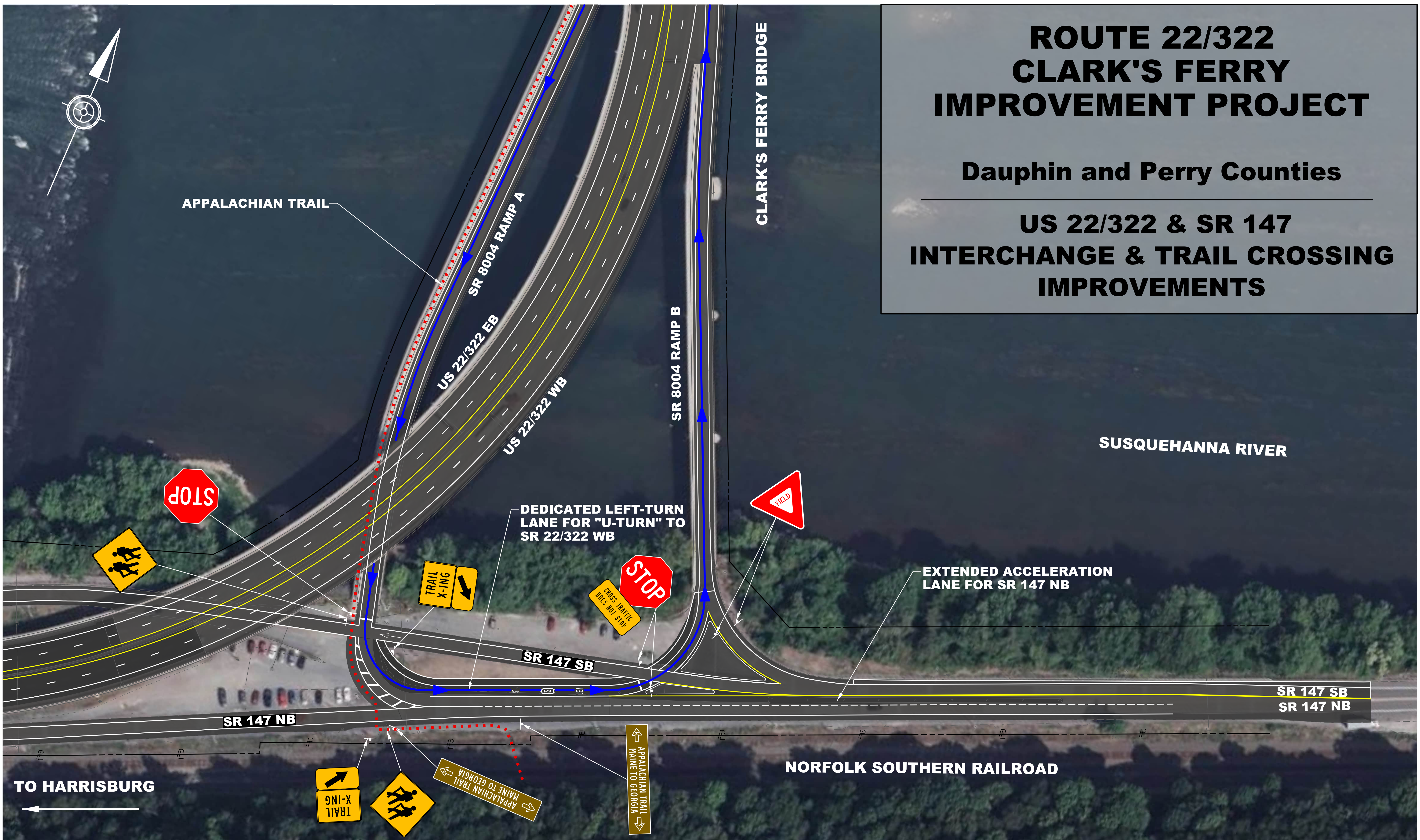


# ROUTE 22/322 CLARK'S FERRY IMPROVEMENT PROJECT

Dauphin and Perry Counties

## US 22/322 & SR 147 INTERCHANGE & TRAIL CROSSING IMPROVEMENTS



PLOT\_DRIVER: pcedat2011.pdf\_color-grayscale.pltcfgrg  
PEN\_TABLE: ..\Pen\_Table\OcreTimefile.tbl  
WORKSPACE: C:\BENTON\02\_riverlandus

OPERATOR: daniellederoff  
FILE\_PATH: C:\2011\060505\02\_19001\_02\HWY-TR\CON\isp\sys\pub\lic\meeting-147\interchange.dgn  
PLOT\_DATE: 10/16/2012 10:14:02 AM

