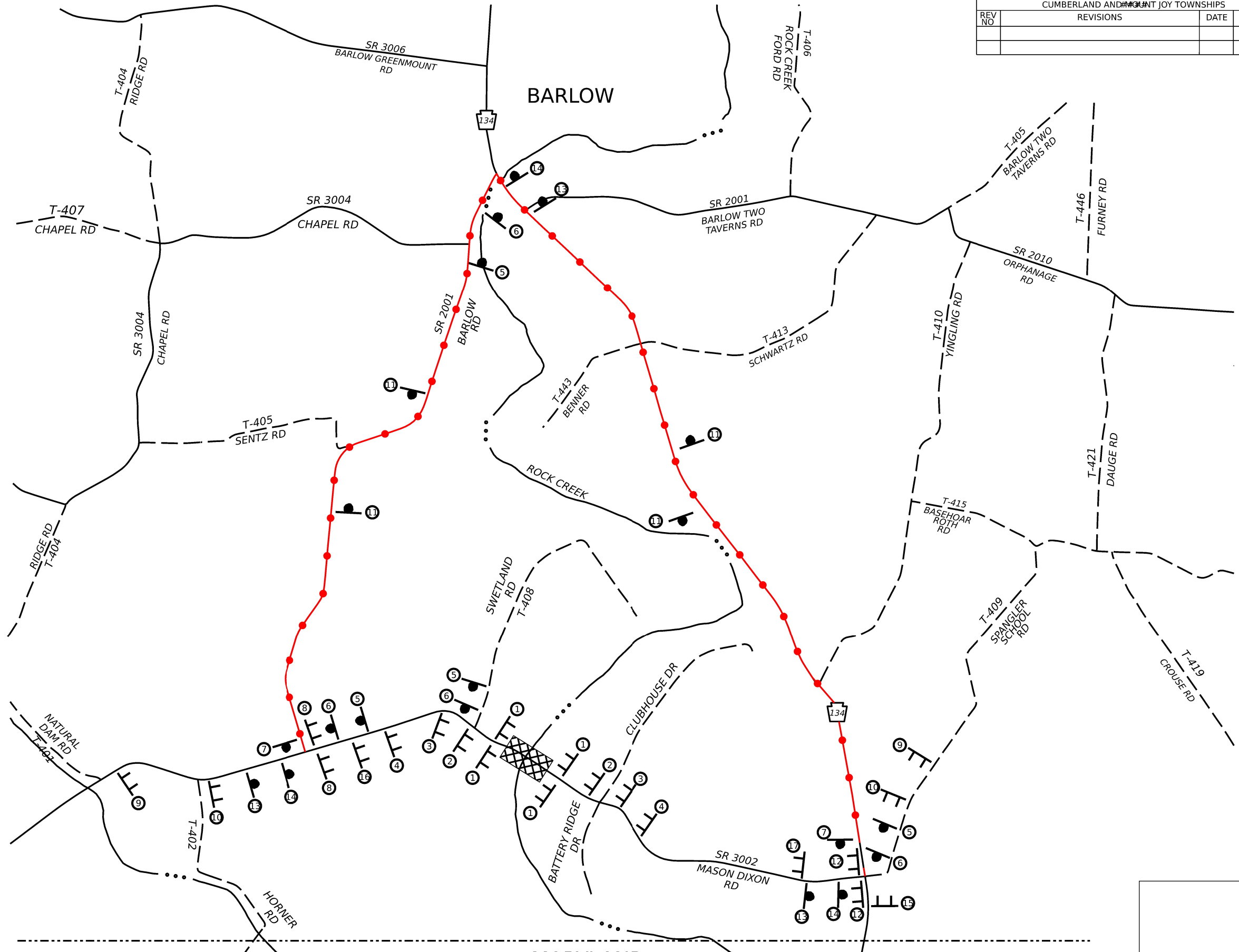
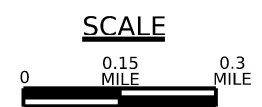


DISTRICT	COUNTY	ROUTE	SECTION	SHEET	
8-0	ADAMS	3002	016	2 OF###	
CUMBERLAND AND MOUNT JOY TOWNSHIPS					
REV NO	REVISIONS		DATE	BY	APPD

PLOTTED: \$\$\$DATE\$\$\$



- LEGEND:**
- -PROPOSED DETOUR ROUTE (APPROXIMATELY 6.75 MILES)
  - PROJECT LOCATION
  - TEMPORARY SIGN TYPE B SIGN POST
  - TEMPORARY TYPE III BARRICADE
  - 1 -SIGN NUMBER
  - STREAM
  - STATE ROAD
  - TOWNSHIP ROAD
  - STATE LINE



**TRAFFIC CONTROL PLAN  
SR3002 (MASON DIXON RD)  
DETOUR PLAN**

OPERATOR: gresm  
FILE NAME: \$designfile\$\$