



# **ROUTE 73 (SKIPPACK PIKE) BRIDGE IMPROVEMENT PROJECT**

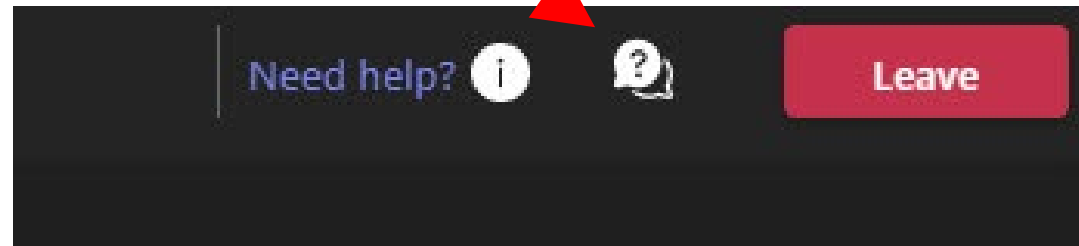
Skippack Township  
Montgomery County

**Judith Arena (PennDOT)**  
**Cathy Farrell (HNTB)**

**June 2024**

# QUESTIONS?

Questions can be submitted by clicking on the Q&A feature located at the top of your screen



Please note the slide number in your question



# PROJECT TEAM



**Judith Arena – PennDOT Project Manager**



**Cathy Farrell, PE – Consultant Design Team  
Project Manager**



**EMAIL QUESTIONS TO:**

**jarena@pa.gov  
cgfarrell@hntb.com**



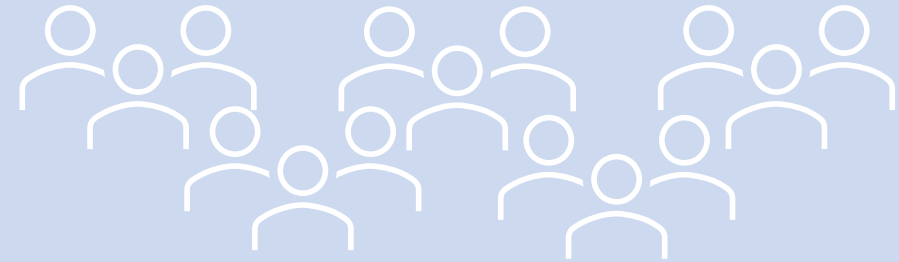
**PROJECT WEBSITE:**

<https://bit.ly/4bKfGQp>

# TODAY'S MEETING AGENDA

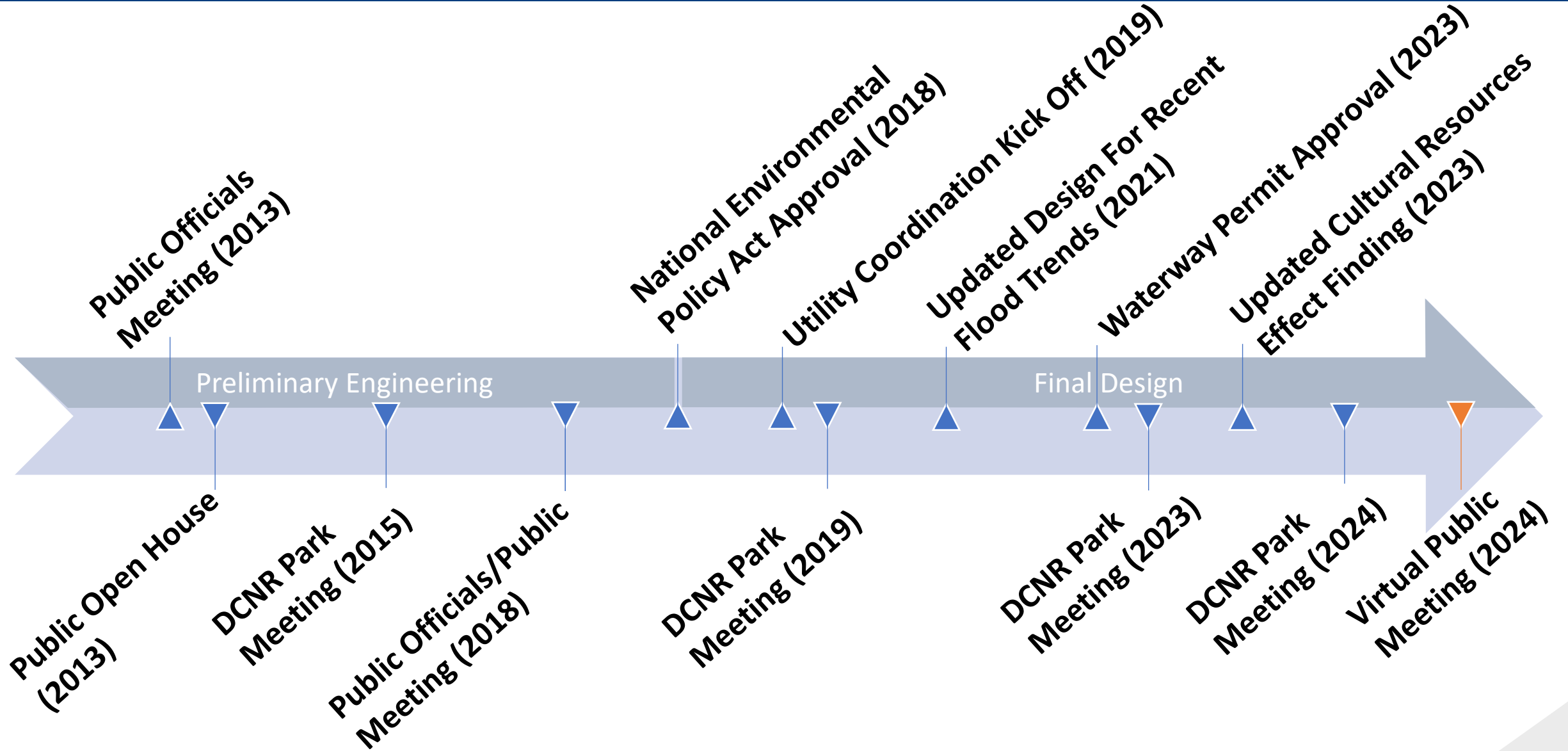


- Project Update
- Project Location
- Existing Site Features and Constraints
- Project Purpose and Needs
- Proposed Improvements - Scope of Work
- Traffic Control Plan
- Next Steps and Timing
- Q&A

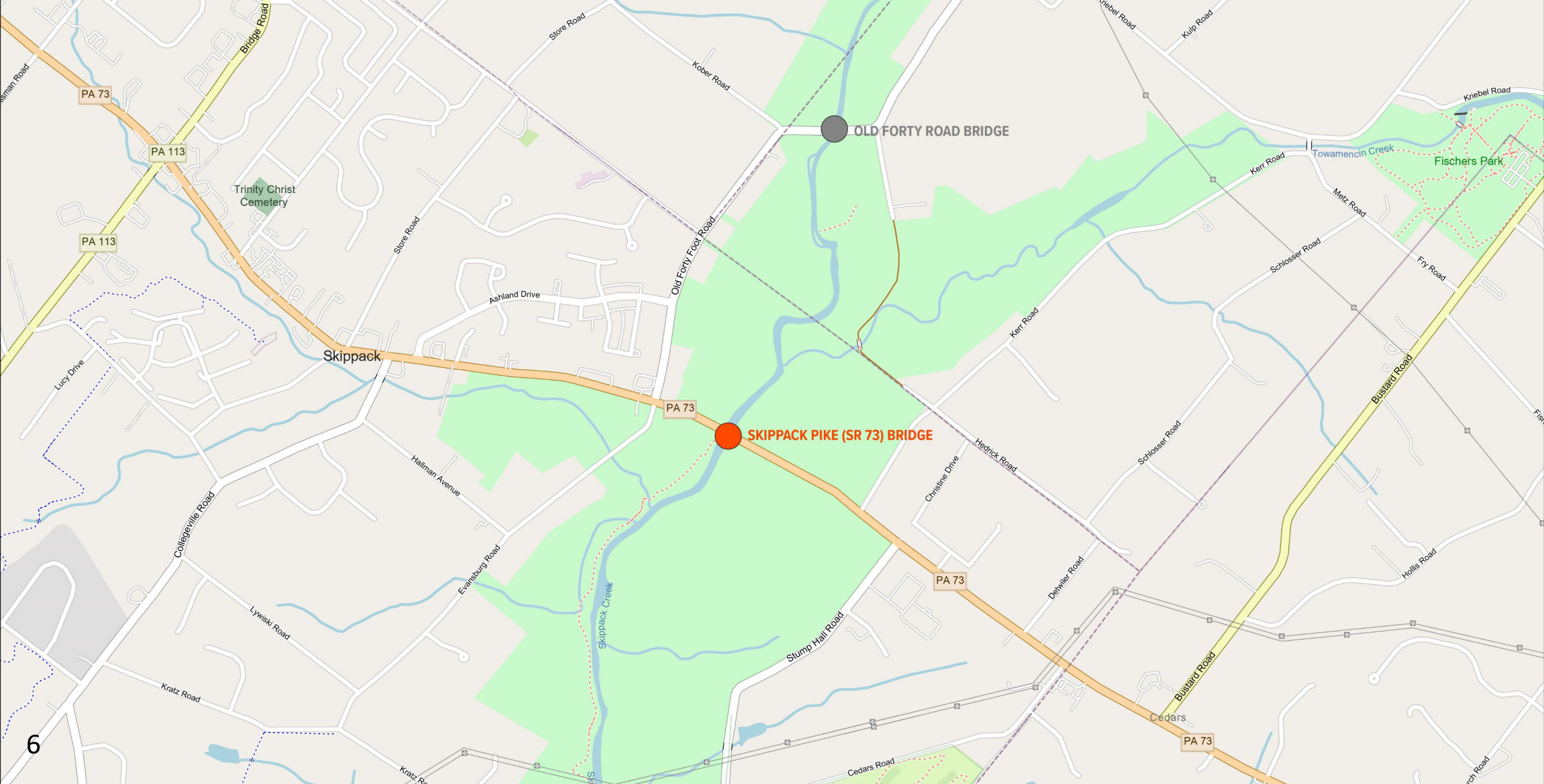


**This presentation is being  
RECORDED  
and will be posted to the  
PROJECT WEBSITE**

# PROJECT UPDATE



# PROJECT LOCATION



# EXISTING BRIDGE AND ROADWAY FEATURES

## Existing Structure

- 80 feet long, 2 spans, 44 feet wide curb to curb
- Reinforced concrete T-Beam bridge with concrete piers and abutments constructed in 1935
- Poor overall condition

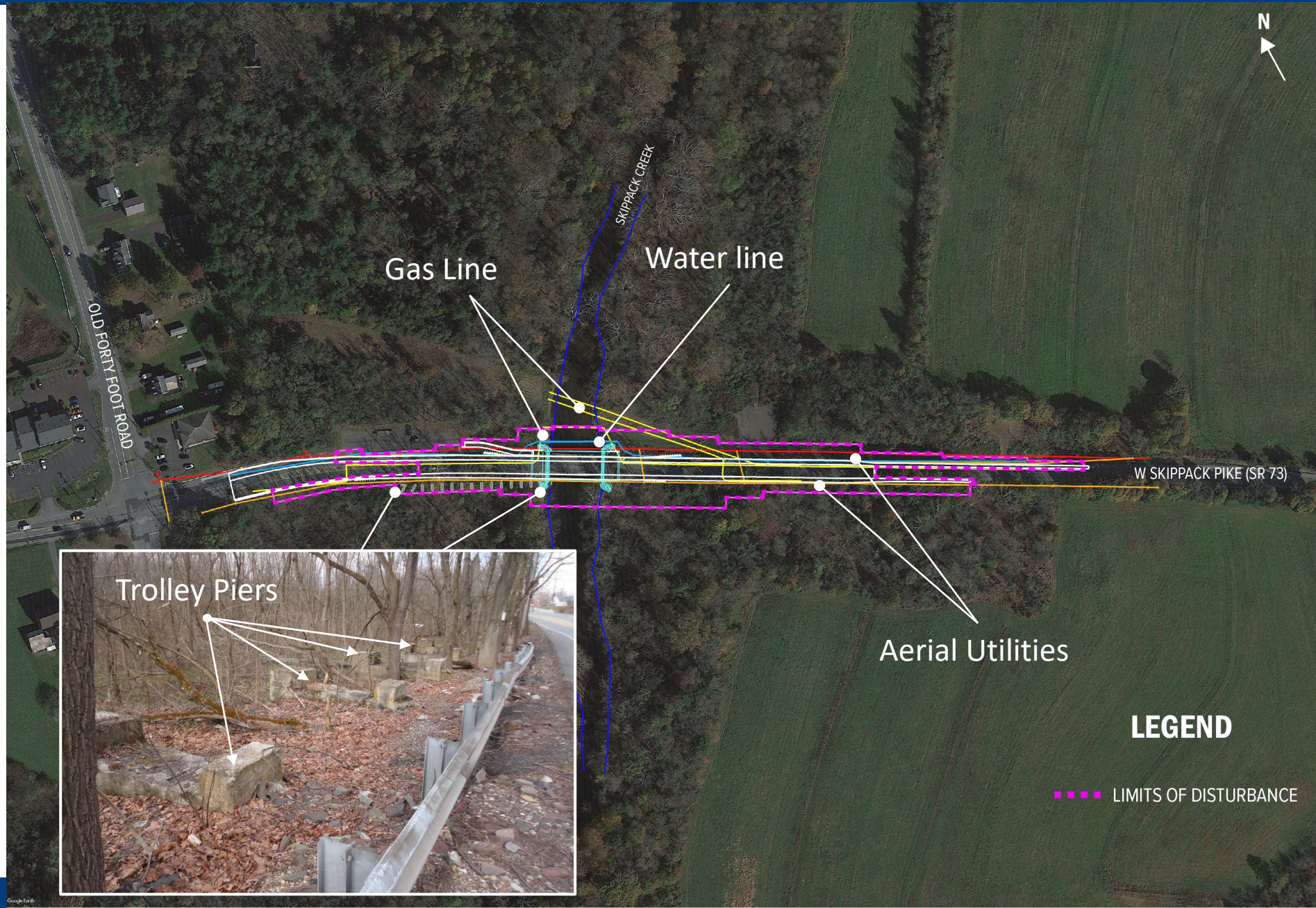
## Existing Roadway

- 1 lane of traffic in each direction with shoulders varying from 3 - 8 feet
- Slight vertical curve impacting sight distance



# SITE CONSTRAINTS AND RESOURCES

- Seasonal restriction on in-stream work
  - Trout Stocked
  - Red-Bellied Turtle
- Preservation of remaining existing trolley piers
- Evansburg State Park
- Existing and relocated utilities





# PROJECT PURPOSE



The purpose of this project is to provide a long-term transportation facility that is structurally sound and capable of safely and efficiently handling the expected vehicular traffic.



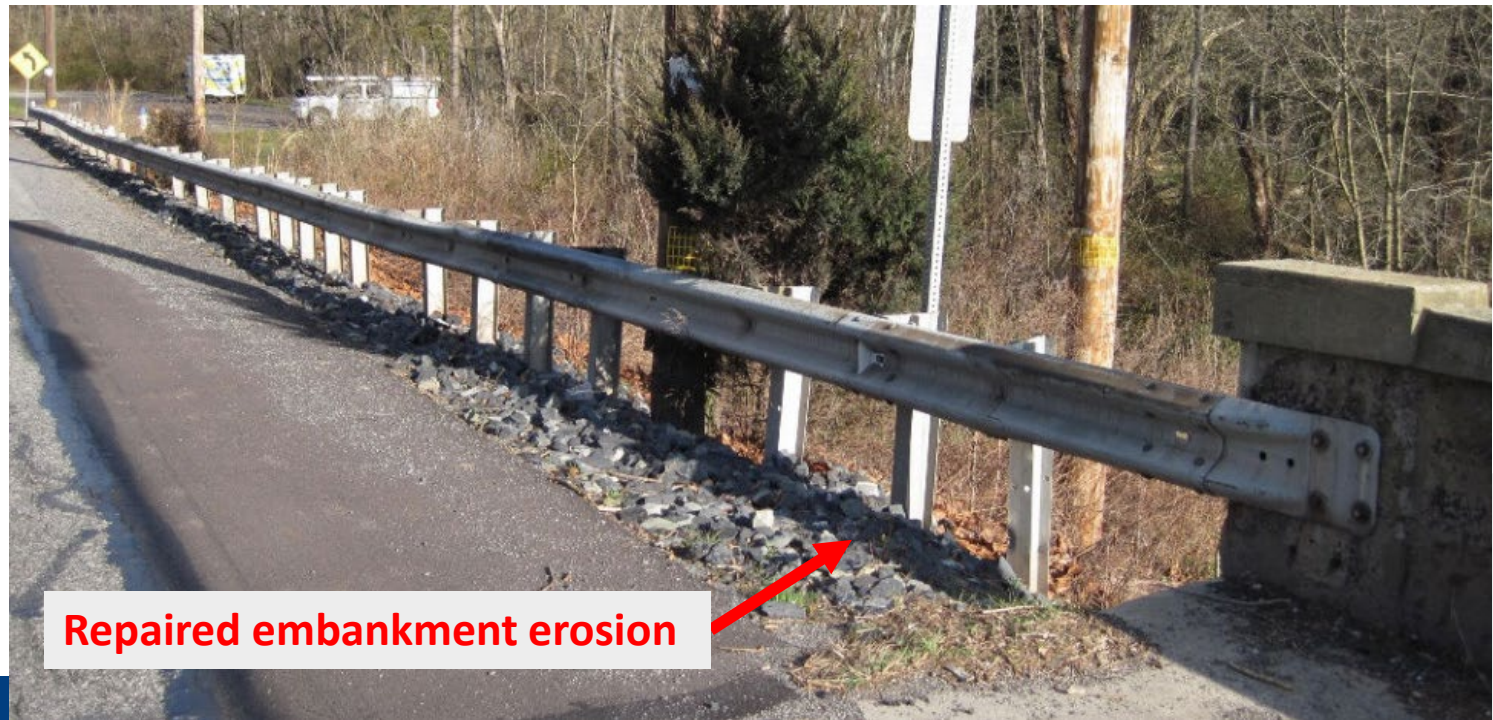
# PROJECT NEEDS

1. The Skippack Pike bridge is currently in poor condition.

2. Streambed scour has exposed the bridge footing.

3. Roadway embankment erosion on the upstream side of the bridge.

4. Western approach of Route 73 has sub-standard vertical sight distance.



# PROJECT IMPROVEMENTS



7.5 ft DCNR Trail Connection

12 ft travel lanes  
4-8 ft shoulders

Brown painted railing and guiderail

# PROJECT IMPROVEMENTS



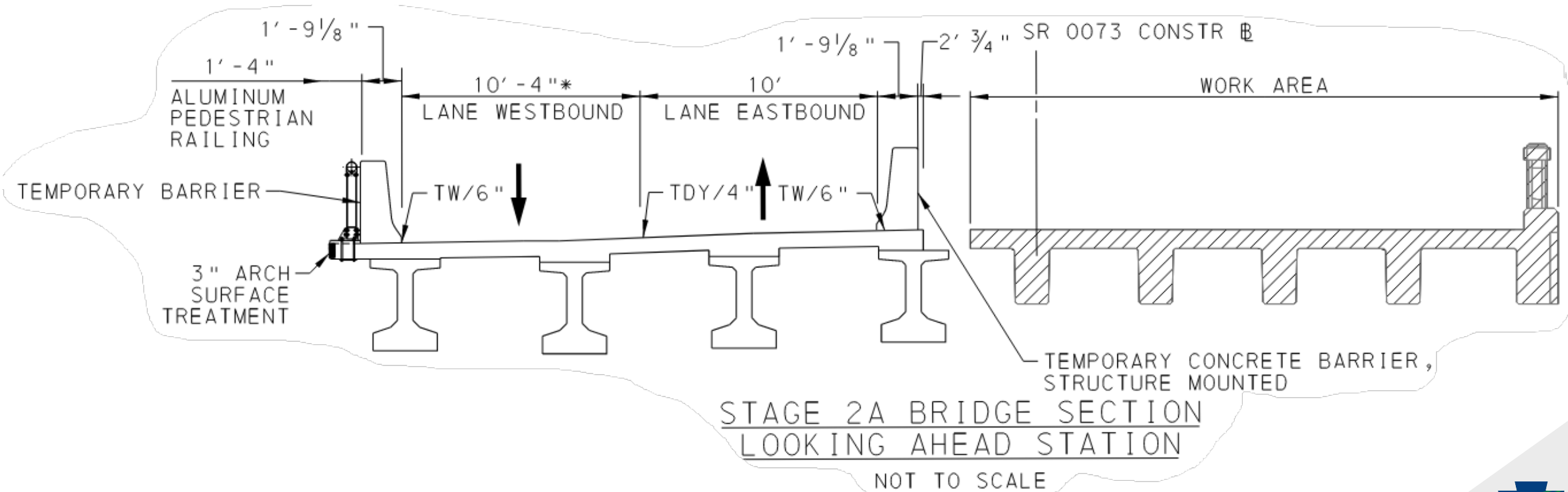
Natural stone  
formliner, stained

Outside fascia  
beam stained  
dark brown

Elimination of  
center pier

# DURING CONSTRUCTION TRAFFIC CONTROL

- Staged construction utilized to maintain the flow of traffic
- 1 lane of traffic will be maintained in each direction for the duration of construction



# NEXT STEPS AND TIMING

- Advertisement anticipated – summer 2024
- Letting anticipated – late summer 2024
- Construction to begin – fall 2024
- Construction to conclude – summer 2027





**Project Manager Contact:**

Judith Arena

[jarena@pa.gov](mailto:jarena@pa.gov)

**Consultant Designer Contact:**

Cathy Farrell

[cgfarrell@hntb.com](mailto:cgfarrell@hntb.com)



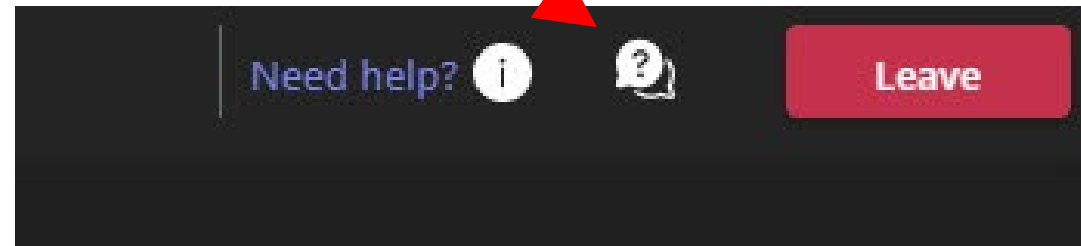
**For additional information  
and project updates:**

<https://bit.ly/4bKfGQp>



# QUESTIONS?

Questions can be submitted by clicking on the Q&A feature located at the top of your screen



Please note the slide number in your question





# THANK YOU FOR PARTICIPATING!

FOR MORE INFORMATION, VISIT THE PENNDOT DISTRICT 6 WEBSITE

[HTTPS://BIT.LY/4BKFGQP](https://bit.ly/4BKFGQP)