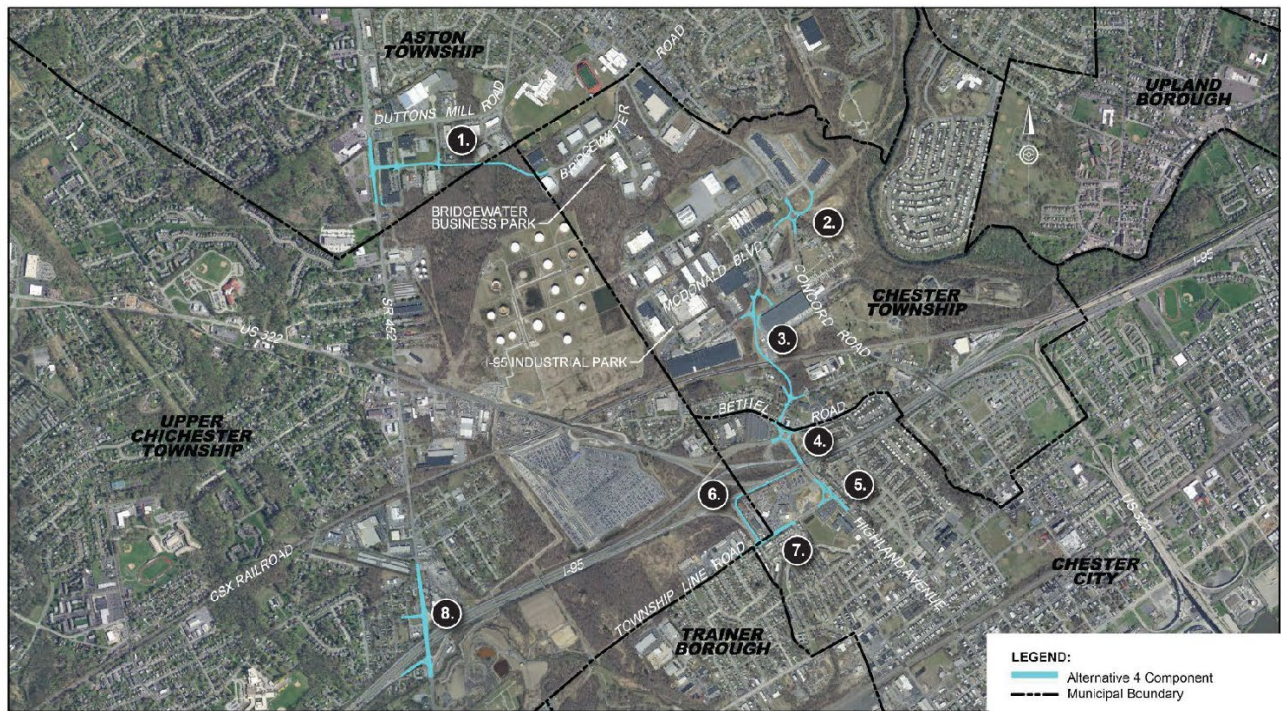


# Concord Road Business Park Access Improvement Study Study Results and Recommendations

## ALTERNATIVE 4

This alternative is similar to Alternative 2 but instead of providing a connection between the business and industrial parks, Alternative 4 proposes improved access to the Bridgewater Business Park from SR 452. This would be accomplished by extending Bridgewater Road from the Bridgewater Business Park to Turner Industrial Way with a new intersection at SR 452. Because this configuration would shift additional traffic onto SR 452 to access I-95, improvements to the SR 452/I-95 interchange are also proposed.



ALTERNATIVE 4

Concord Road Business Park Access Improvements Study | Delaware County | PennDOT District 6-0 | August, 2022

- 1. Bridgewater Road Extension Connecting with SR 452 Chester, Township/Aston Township** This new roadway will connect the Bridgewater Business Park to SR 452 by way of Turner Industrial Way and would require a bridge to span Baldwin Run. A new signalized intersection would be created at SR 452.
- 2. Concord Road / McDonald Boulevard Intersection, Chester Township** This existing intersection is burdened by safety and traffic issues, which are projected to worsen in future years. Currently there is a stop sign on McDonald Boulevard, the minor approach, serving as the only control. Three-hundred fifty feet north of McDonald Boulevard, Concord Road intersects with the driveways to the Chester Creek Business Center Complex and a parking lot for WestRock in the I-95 Industrial Park which further increases traffic congestion.

Proposed improvements were developed to include roundabout and signal options. The roundabout was chosen as the preferred option.

- 3. Commerce Drive to Bethel Road-Highland Avenue Connection, Chester Township** The new connection will provide access from Commerce Drive (I-95 Industrial Park) to Bethel Road via Green Street. Two options were investigated for crossing CSX railroad, including an at-grade crossing or a bridge overhead.
- 4. Highland Avenue / Green Street / Bethel Road Intersection, City of Chester** With the addition of the Commerce to Bethel Connection described earlier, this intersection component is a critical part of the project improvements. The Green Street leg will change its use from a low-volume local road to a collector road with higher truck volumes, as much of the traffic from the Business and Industrial Parks will flow through this intersection. A roundabout option and a signalized option were developed for the intersection with the roundabout being chosen as the preferred option.
- 5. Highland Avenue / 15th Street Intersection, City of Chester** Two options were developed for this intersection, including a roundabout option and a revised traffic signal option, with the roundabout being chosen as the preferred option.
- 6. New Relocated I-95 On-Ramp, City of Chester** With the proposed closure of the existing I-95 northbound on-ramp at Highland Street/South Forwood Street, a new ramp connection to I-95 northbound would be provided adjacent to the existing northbound off-ramp from US 322 EB / I-95 NB.

*Includes:*

- 7. Township Line Road / Renshaw Road / SR 8015 Ramps Signalized Intersection, City of Chester** The addition of the new I-95 On-Ramp would require a reconfiguration of this existing intersection.
- 8. I-95 / SR 452 Interchange, Upper Chichester Township** Providing a new connection from the Bridgewater Business Park onto SR 452 is anticipated to add traffic to the interchange of SR 452 and the I-95 ramps. Currently, the intersection of SR 452 and I-95 northbound is unsignalized and is expected to operate over capacity in the design year. Also, SR 452 southbound is expected to operate over capacity at the signalized intersection with the I-95 southbound ramps. Therefore, improvements at the I-95 / SR 452 Interchange were included with this alternative to improve traffic operations.