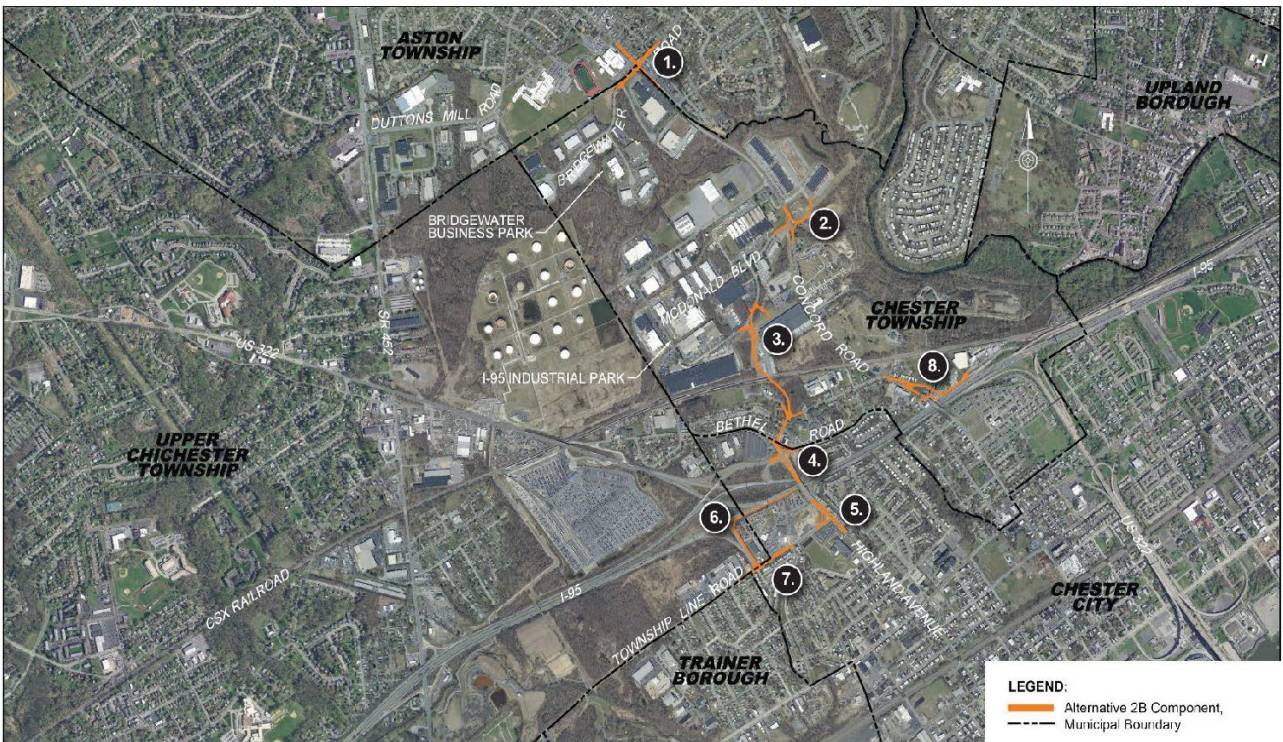


Concord Road Business Park Access Improvement Study Study Results and Recommendations

ALTERNATIVE 2b

This alternative includes most components of Alternative 2 but eliminates the connection between the two parks. Since the Bridgewater Business Park traffic would still need to utilize Concord Road to get to and from I-95, additional improvements are proposed at other intersections along Concord Road.



ALTERNATIVE 2B

Concord Road Business Park Access Improvements Study | Delaware County | PennDOT District 6-0 | August, 2022

- 1. Concord Road / Bridgewater Road Intersection, Chester Township/Aston Township** This component will improve the existing signalized intersection. Two similar options were developed, one with a channelized westbound right-turn lane and the other without.
- 2. Concord Road / McDonald Boulevard Intersection, Chester Township** This existing intersection is burdened by safety and traffic issues, which are projected to worsen in future years. Currently there is a stop sign on McDonald Boulevard, the minor approach, serving as the only control. Three-hundred fifty feet north of McDonald Boulevard, Concord Road intersects with the driveways to the Chester Creek Business Center Complex and a parking lot for WestRock in the I-95 Industrial Park which further increases traffic congestion. Proposed improvements were developed to include roundabout and signal options. The roundabout was chosen as the preferred option.

- 3. Commerce Drive to Bethel Road-Highland Avenue Connection, Chester Township** The new connection will provide access from Commerce Drive (I-95 Industrial Park) to Bethel Road via Green Street. Two options were investigated for crossing CSX railroad, including an at-grade crossing or a bridge overhead.
- 4. Highland Avenue / Green Street / Bethel Road Intersection, City of Chester** With the addition of the Commerce to Bethel Connection described earlier, this intersection component is a critical part of the project improvements. The Green Street leg will change its use from a low-volume local road to a collector road with higher truck volumes, as much of the traffic from the Business and Industrial Parks will flow through this intersection. A roundabout option and a signalized option were developed for the intersection with the roundabout being chosen as the preferred option.
- 5. Highland Avenue / 15th Street Intersection, City of Chester** Two options were developed for this intersection, including a roundabout option and a revised traffic signal option, with the roundabout being chosen as the preferred option.
- 6. New Relocated I-95 On-Ramp, City of Chester** With the proposed closure of the existing I-95 northbound on-ramp at Highland Street/South Forwood Street, a new ramp connection to I-95 northbound would be provided adjacent to the existing northbound off-ramp from US 322 EB / I-95 NB.

Includes:

- 7. Township Line Road / Renshaw Road / SR 8015 Ramps Signalized Intersection, City of Chester** The addition of the new I-95 On-Ramp would require a reconfiguration of this existing intersection.
- 8. Concord Road / Bethel Road Roundabout and Engle Street Intersection, Chester Township** This component includes the installation of a roundabout at the Concord Road and Bethel Road intersection. Also included in this component are realignments of the existing T-intersections at Concord Road and Engle Street and at Concord Road and the US 322 WB off-ramp (SR 8017 Ramp Road).