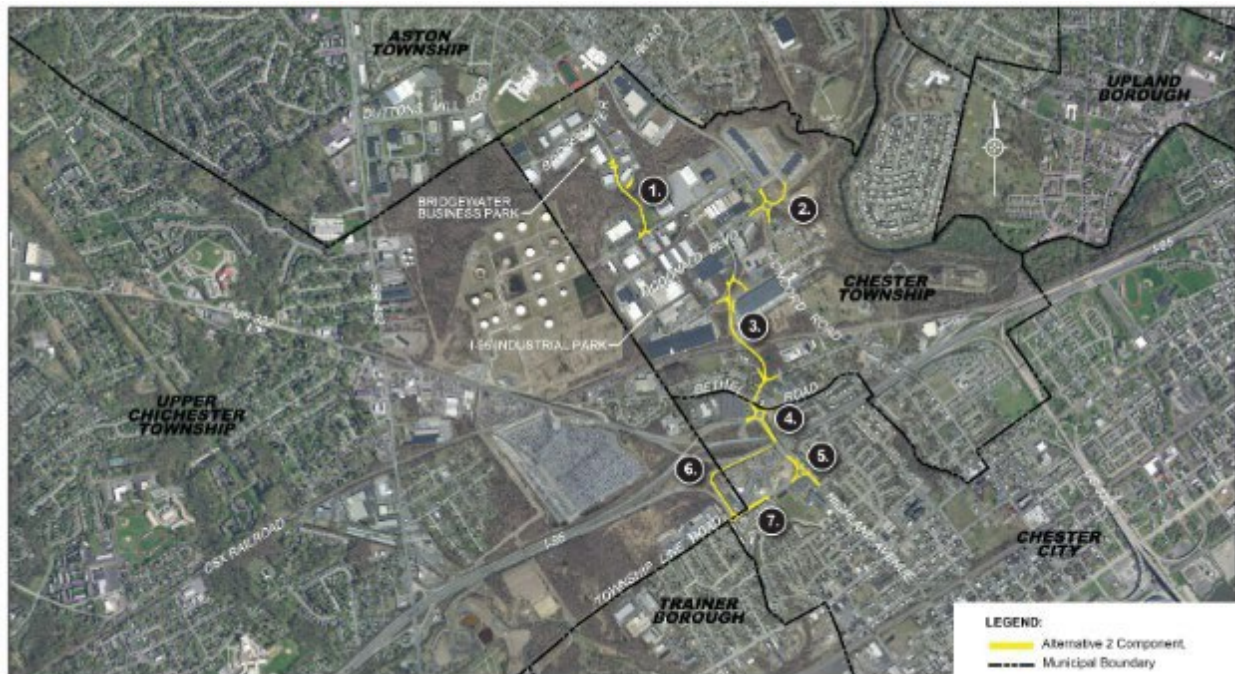


# Concord Road Business Park Access Improvement Study Study Results and Recommendations

## ALTERNATIVE 2

Alternative 2 assumes a new connection from the I-95 Industrial Park to the intersection of Green Street / Highland Avenue and Bethel Road / I-95 SB Ramps. In addition, a connector road is provided between the two business parks to facilitate traffic flow from the Bridgewater Business Park to the I-95 Industrial Park. To provide these connections and accommodate the flow of traffic, several improvements were also assumed for key intersections along the traffic route.



ALTERNATIVE 2

Concord Road Business Park Access Improvements Study | Delaware County | PennDOT District 6-0 | August, 2022

- 1. Connector Road Between I-95 Industrial Park and Bridgewater Business Park, Chester Township** A connection is provided between the Bridgewater Business Park and the I-95 Industrial Park. The new roadway would connect North Commerce Drive with Milton Drive and would require a bridge to span Baldwin Run.
- 2. Concord Road / McDonald Boulevard Intersection, Chester Township** This existing intersection is burdened by safety and traffic issues, which are projected to worsen in future years. Currently there is a stop sign on McDonald Boulevard, the minor approach, serving as the only control. Three-hundred fifty feet north of McDonald Boulevard, Concord Road intersects with the driveways to the Chester Creek Business Center Complex and a parking lot for WestRock in the I-95 Industrial Park which further increases traffic congestion. Proposed improvements were developed to include roundabout and signal options. The roundabout was chosen as the preferred option.

- 3. Commerce Drive to Bethel Road-Highland Avenue Connection, Chester Township** The new connection will provide access from Commerce Drive (I- 95 Industrial Park) to Bethel Road via Green Street. Two options were investigated for crossing CSX railroad, including an at-grade crossing or a bridge overhead.
- 4. Highland Avenue / Green Street / Bethel Road Intersection, City of Chester** With the addition of the Commerce to Bethel Connection described earlier, this intersection component is a critical part of the project improvements. The Green Street leg will change its use from a low-volume local road to a collector road with higher truck volumes, as much of the traffic from the Business and Industrial Parks will flow through this intersection. A roundabout option and a signalized option were developed for the intersection with the roundabout being chosen as the preferred option.
- 5. Highland Avenue / 15th Street Intersection, City of Chester** Two options were developed for this intersection, including a roundabout option and a revised traffic signal option, with the roundabout being chosen as the preferred option.
- 6. New Relocated I-95 On-Ramp, City of Chester** With the proposed closure of the existing I-95 northbound on-ramp at Highland Street/South Forwood Street, a new ramp connection to I-95 northbound would be provided adjacent to the existing northbound off-ramp from US 322 EB / I-95 NB.

*Includes:*

- 7. Township Line Road / Renshaw Road / SR 8015 Ramps Signalized Intersection, City of Chester** The addition of the new I-95 On-Ramp would require a reconfiguration of this existing intersection.