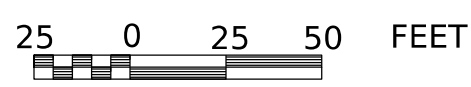
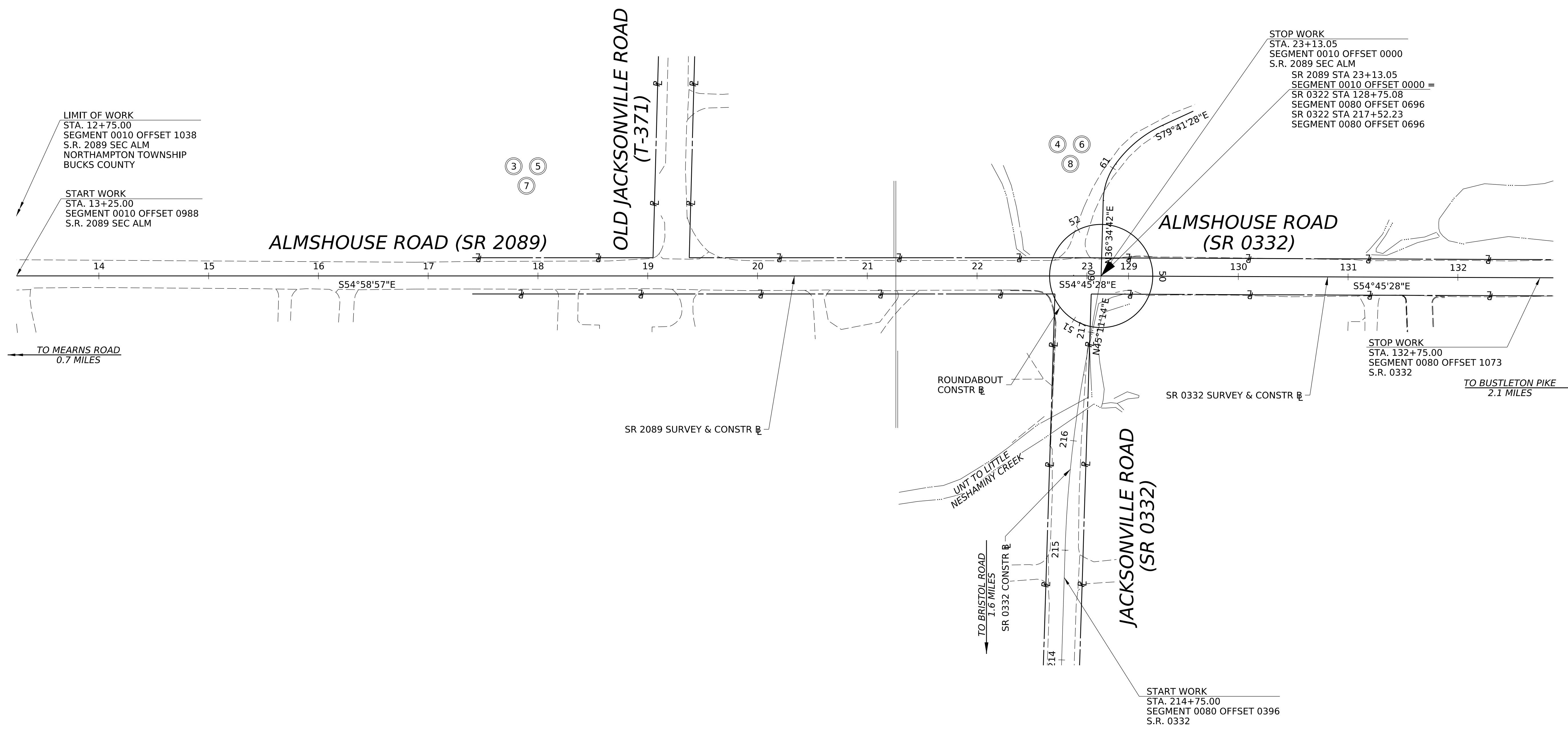
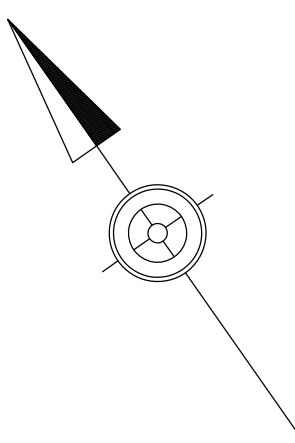


DISTRICT	COUNTY	ROUTE	SECTION	SHEET		
6-0	BUCKS	2089	ALM	2 OF 8		
NORTHAMPTON TOWNSHIP						
REV NO	REVISIONS			DATE	BY	APPD

LEGEND











○ PLAN

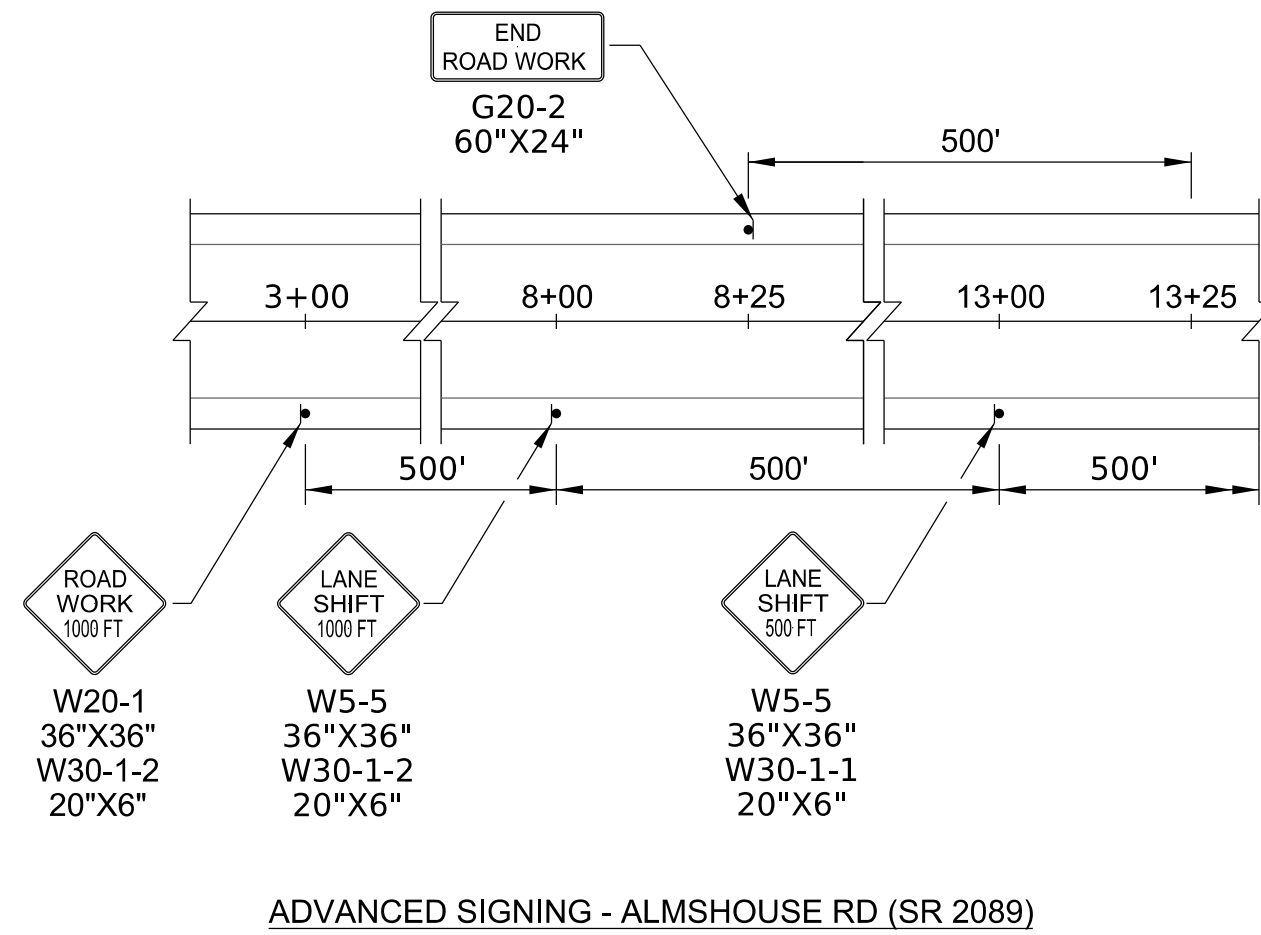


INDEX MAP

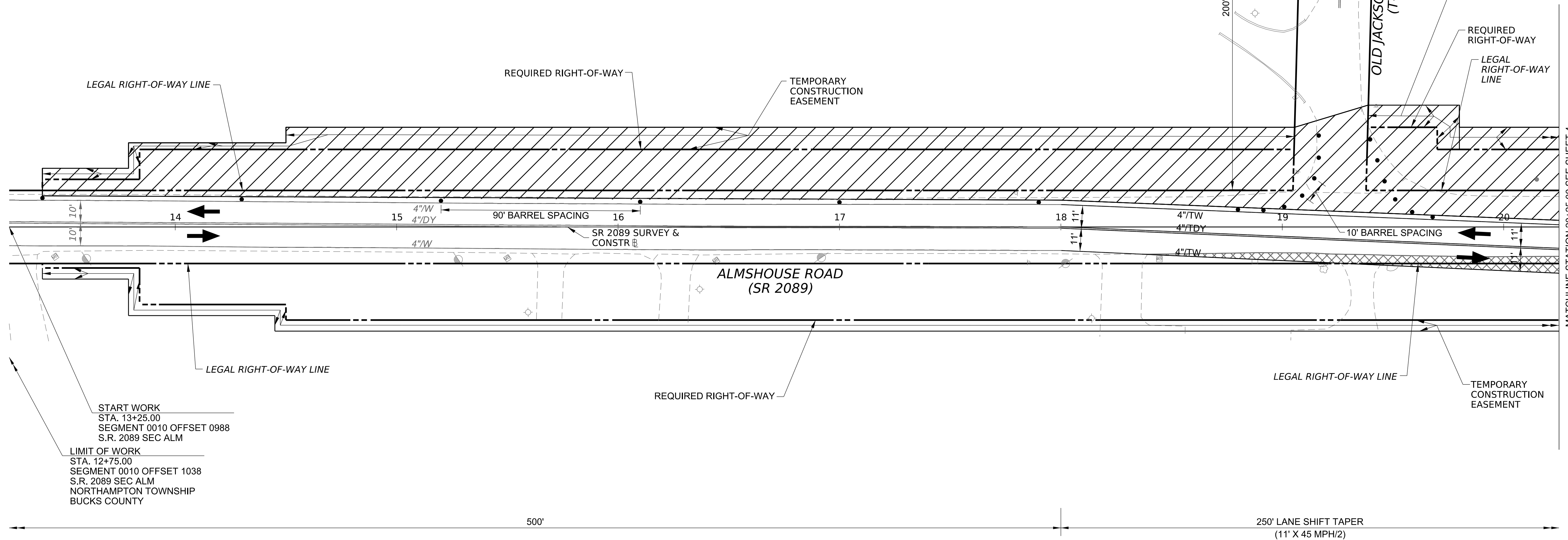
DISTRICT	COUNTY	ROUTE	SECTION	SHEET
6-0	BUCKS	2089	ALM	3 OF 8
NORTHAMPTON TOWNSHIP				
REV NO	REVISIONS	DATE	BY	APPD

LEGEND

-  EXISTING SIGN LOCATION - SINGLE POST
-  PROPOSED SIGN LOCATION - SINGLE POST
-  CHANNELIZING DEVICE
-  TRAFFIC FLOW
-  4" W 4" WIDTH / SOLID WHITE LINE
-  4" DY 4" WIDTH / DOUBLE YELLOW LINE
-  4" TW TEMPORARY 4" WIDTH / SOLID WHITE LINE
-  4" TDY TEMPORARY 4" WIDTH / DOUBLE YELLOW LINE
-  AREA UNDER CONSTRUCTION
-  TEMPORARY PAVEMENT



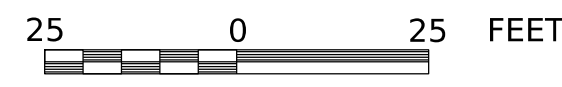
ADVANCED SIGNING - ALMHOUSE RD (SR 2089)



START WORK
STA. 13+25.00
SEGMENT 0010 OFFSET 0988
S.R. 2089 SEC ALM

LIMIT OF WORK
STA. 12+75.00
SEGMENT 0010 OFFSET 1038
S.R. 2089 SEC ALM
NORTHAMPTON TOWNSHIP
BUCKS COUNTY

MATCHLINE STATION 20+25.00 SEE SHEET 4



TRAFFIC CONTROL PLAN STAGE 1

DISTRICT	COUNTY	ROUTE	SECTION	SHEET
6-0	BUCKS	2089	ALM	4 OF 8
NORTHAMPTON TOWNSHIP				
REV NO	REVISIONS	DATE	BY	APPD

LEGEND

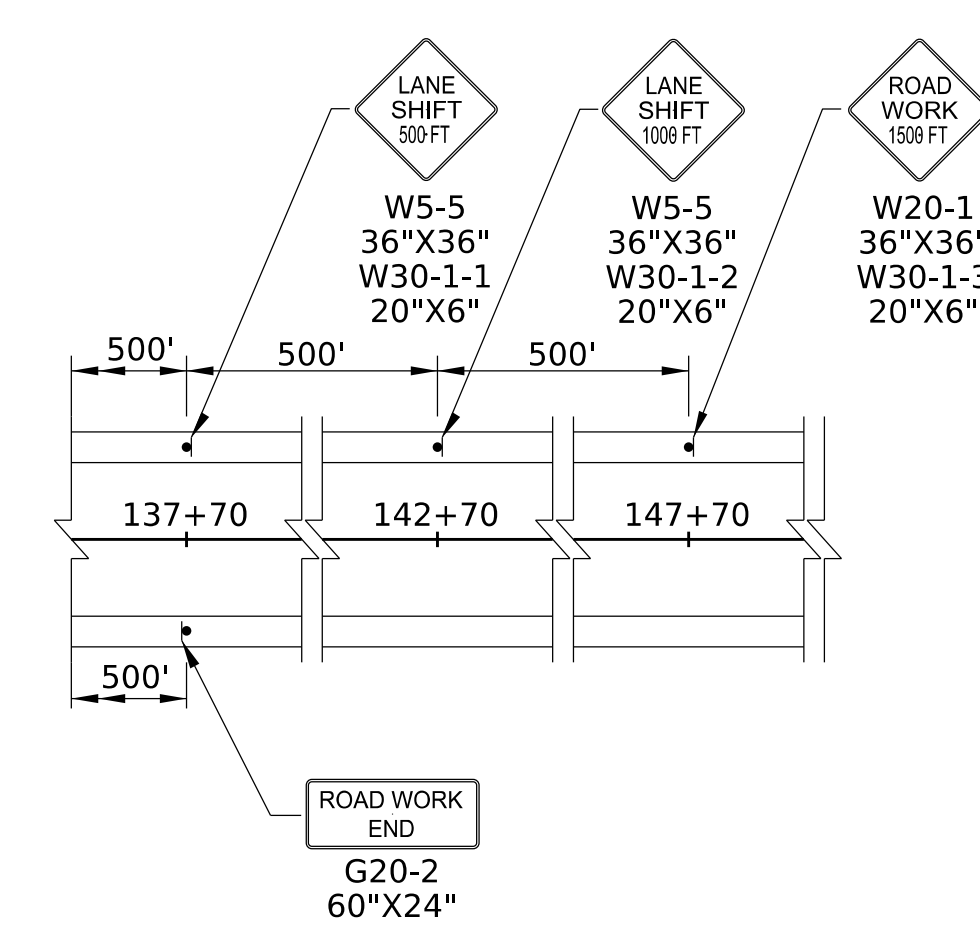
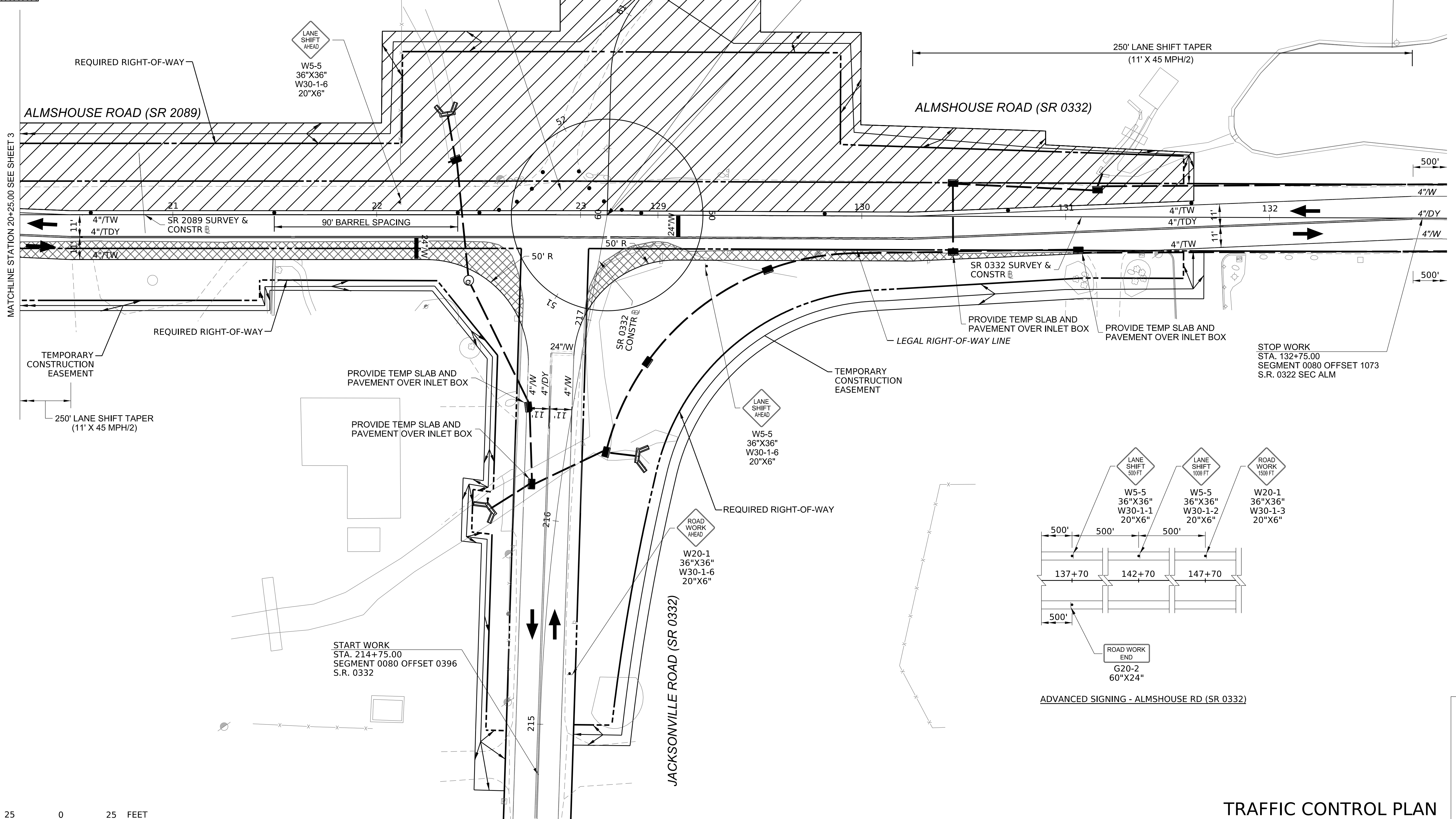
- EXISTING SIGN LOCATION - SINGLE POST
- PROPOSED SIGN LOCATION - SINGLE POST
- CHANNELIZING DEVICE
- TRAFFIC FLOW
- 4" WIDTH / SOLID WHITE LINE
- 4" WIDTH / DOUBLE YELLOW LINE
- TEMPORARY 4" WIDTH / SOLID WHITE LINE
- TEMPORARY 4" WIDTH / DOUBLE YELLOW LINE
- TEMPORARY 24" WIDTH / SOLID WHITE LINE
- AREA UNDER CONSTRUCTION
- TEMPORARY PAVEMENT

NOTE: INSTALL TEMPORARY TRAFFIC SIGNAL

DRIVEWAY ACCESS MUST BE ALLOWED. CONTRACTOR SHALL COORDINATE WITH PROPERTY OWNER TO CLOSE DRIVEWAY AS NEEDED TO COMPLETE WORK IN THIS STAGE.

TEMPORARY CONSTRUCTION EASEMENT

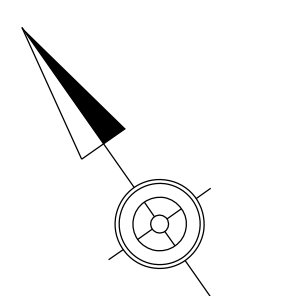
STOP WORK
 STA. 23+13.05
 SEGMENT 0010 OFFSET 0000
 S.R. 2089 SEC ALM
 SR 2089 STA 23+13.05
 SEGMENT 0010 OFFSET 0000 =
 SR 0322 STA 128+75.08
 SEGMENT 0080 OFFSET 0696
 SR 0322 STA 217+52.23
 SEGMENT 0080 OFFSET 0696



ADVANCED SIGNING - ALMHOUSE RD (SR 0332)



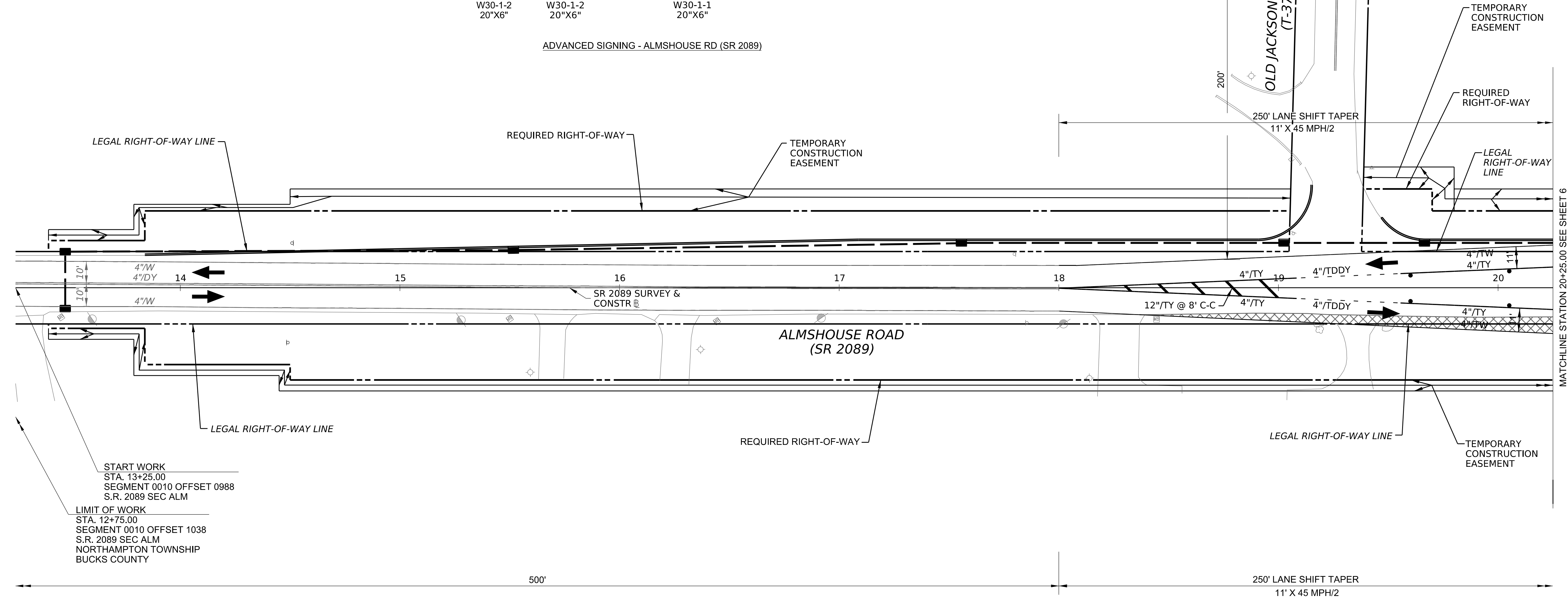
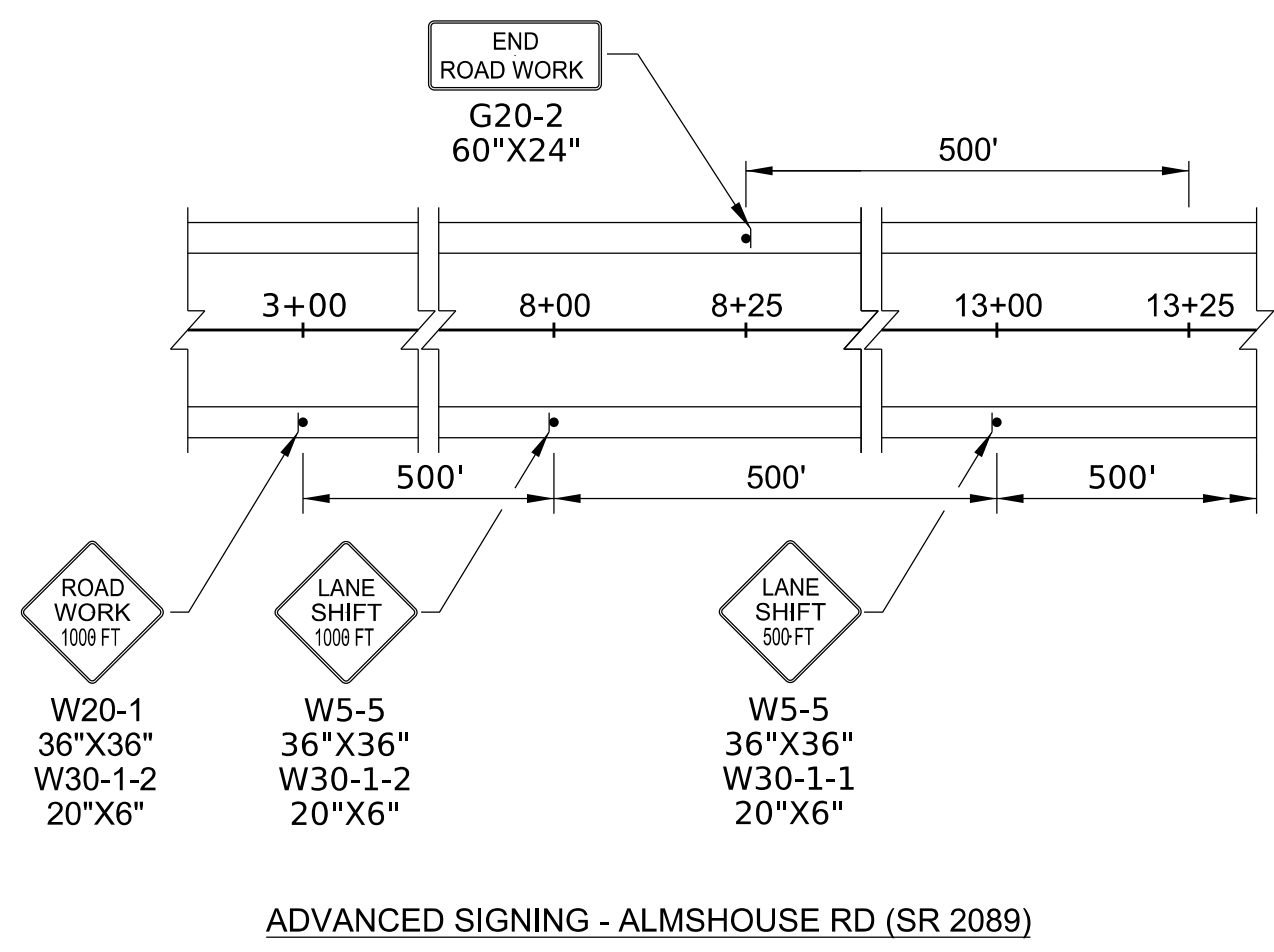
TRAFFIC CONTROL PLAN STAGE 1



DISTRICT	COUNTY	ROUTE	SECTION	SHEET		
6-0	BUCKS	2089	ALM	5 OF 8		
NORTHAMPTON TOWNSHIP						
REV NO	REVISIONS			DATE	BY	APPD

LEGEND

- ◊ EXISTING SIGN LOCATION - SINGLE POST
- PROPOSED SIGN LOCATION - SINGLE POST
- CHANNELIZING DEVICE
- TRAFFIC FLOW
- 4"/W 4" WIDTH / SOLID WHITE LINE
- 4"/DY 4" WIDTH / DOUBLE YELLOW LINE
- 4"/TW TEMPORARY 4" WIDTH / SOLID WHITE LINE
- 4"/TDDY TEMPORARY 4" WIDTH / DOTTED DASHED YELLOW LINE
- 4"/TY TEMPORARY 4" WIDTH / SOLID YELLOW LINE
- 12"/TY TEMPORARY 12" WIDTH / SOLID YELLOW LINE
- AREA UNDER CONSTRUCTION
- TEMPORARY PAVEMENT



START WORK
STA. 13+25.00
SEGMENT 0010 OFFSET 0988
S.R. 2089 SEC ALM

LIMIT OF WORK
STA. 12+75.00
SEGMENT 0010 OFFSET 1038
S.R. 2089 SEC ALM
NORTHAMPTON TOWNSHIP
BUCKS COUNTY








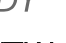
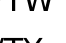

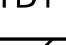




**TRAFFIC CONTROL PLAN
STAGE 2**

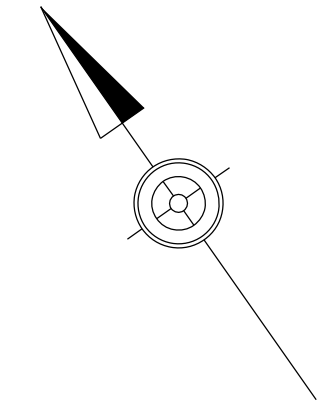
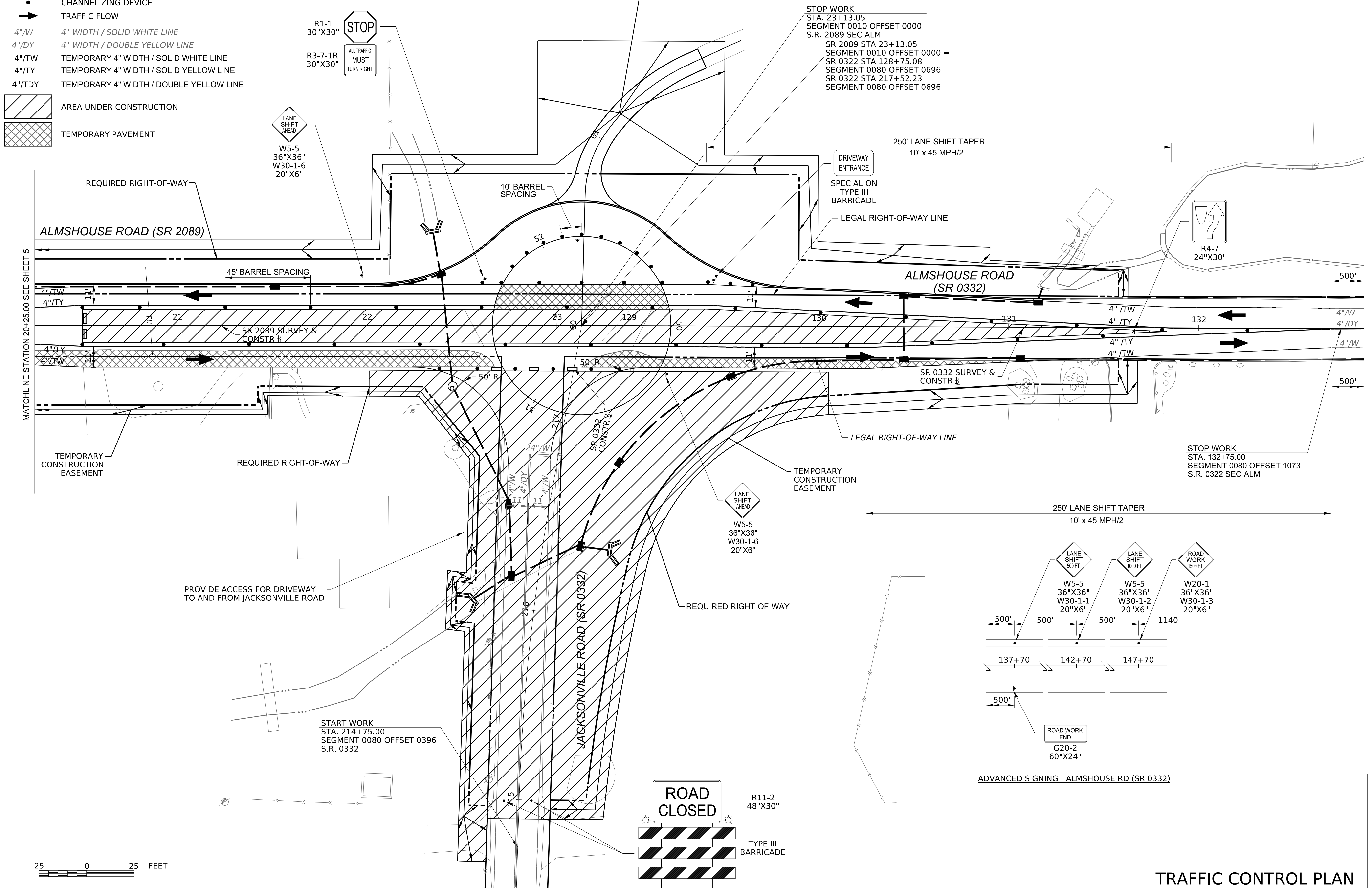
MATCHLINE STATION 20+25.00 SEE SHEET 6

DISTRICT	COUNTY	ROUTE	SECTION	SHEET
6-0	BUCKS	2089	ALM	6 OF 8
NORTHAMPTON TOWNSHIP				
REV NO	REVISIONS	DATE	BY	APPD

LEGEND

-  EXISTING SIGN LOCATION - SINGLE POST
-  PROPOSED SIGN LOCATION - SINGLE POST
-  PROPOSED SIGN LOCATION - SINGLE POST
-  TYPE III BARRICADE
-  CHANNELIZING DEVICE
-  TRAFFIC FLOW
-  4" /W 4" WIDTH / SOLID WHITE LINE
-  4" /DY 4" WIDTH / DOUBLE YELLOW LINE
-  4" /TW 4" WIDTH / SOLID WHITE LINE
-  4" /TY 4" WIDTH / SOLID YELLOW LINE
-  4" /TDY 4" WIDTH / DOUBLE YELLOW LINE
-  AREA UNDER CONSTRUCTION
-  TEMPORARY PAVEMENT






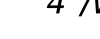
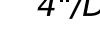
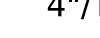
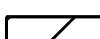
NOTE: INSTALL TEMPORARY TRAFFIC SIGNAL

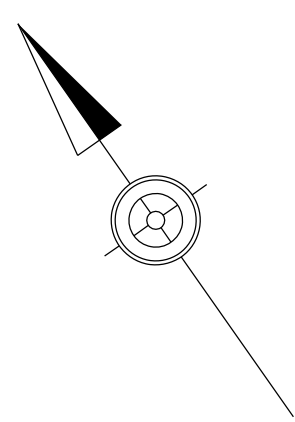
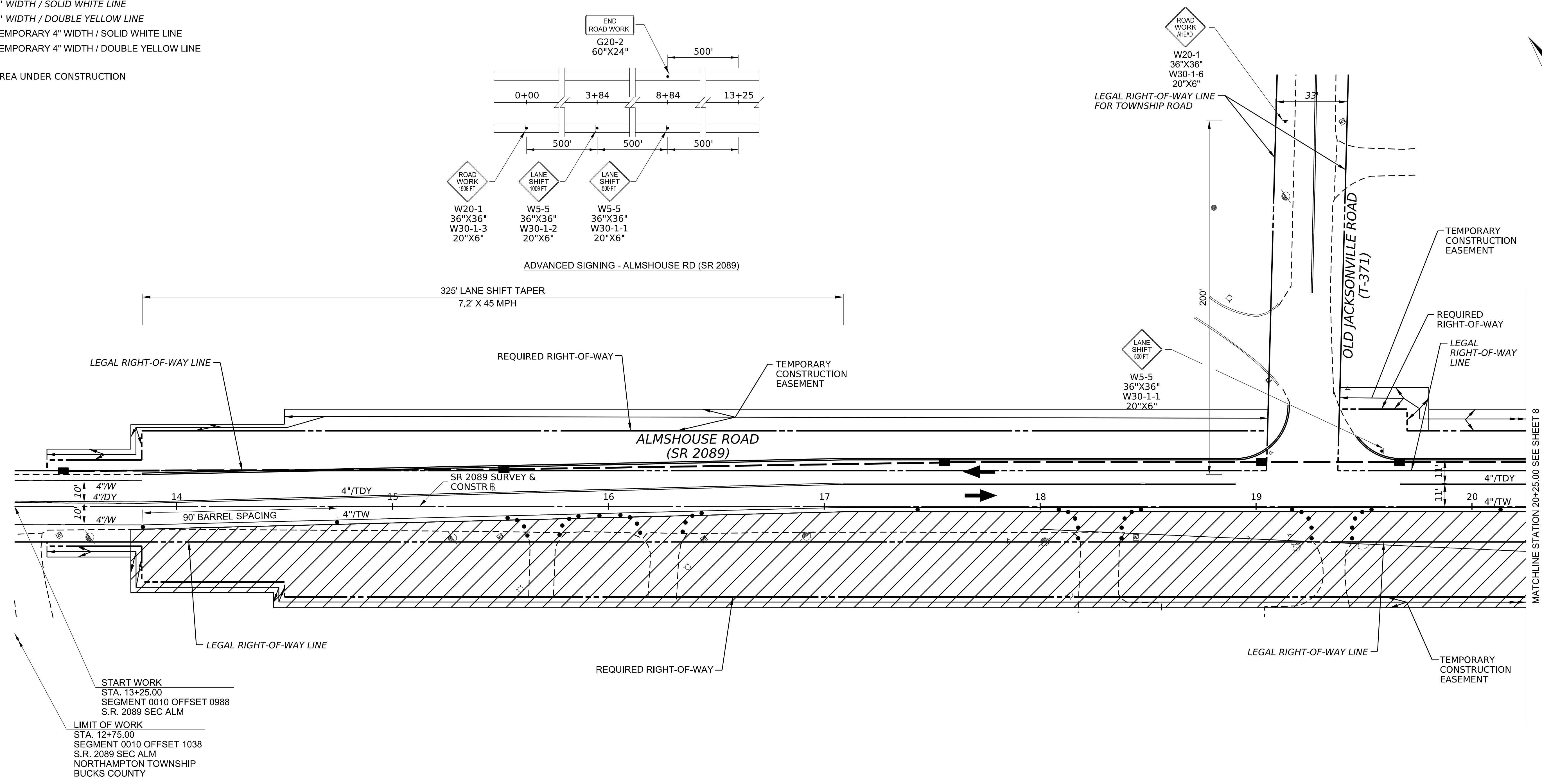


TRAFFIC CONTROL PLAN STAGE 2

DISTRICT	COUNTY	ROUTE	SECTION	SHEET
6-0	BUCKS	2089	ALM	7 OF 8
NORTHAMPTON TOWNSHIP				
REV NO	REVISIONS		DATE	BY APPD

LEGEND

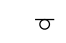


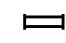



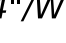



-  EXISTING SIGN LOCATION - SINGLE POST
-  PROPOSED SIGN LOCATION - SINGLE POST
-  CHANNELIZING DEVICE
-  TRAFFIC FLOW
-  4" W 4" WIDTH / SOLID WHITE LINE
-  4" /DY 4" WIDTH / DOUBLE YELLOW LINE
-  4" /TW 4" WIDTH / SOLID WHITE LINE
-  4" /TDY 4" WIDTH / DOUBLE YELLOW LINE
-  AREA UNDER CONSTRUCTION

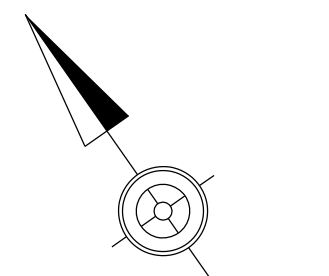
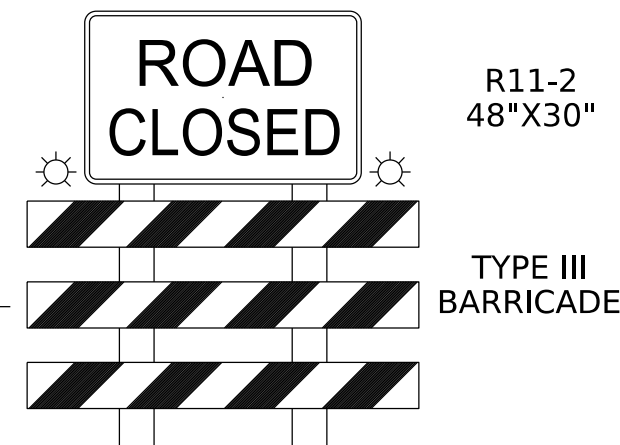
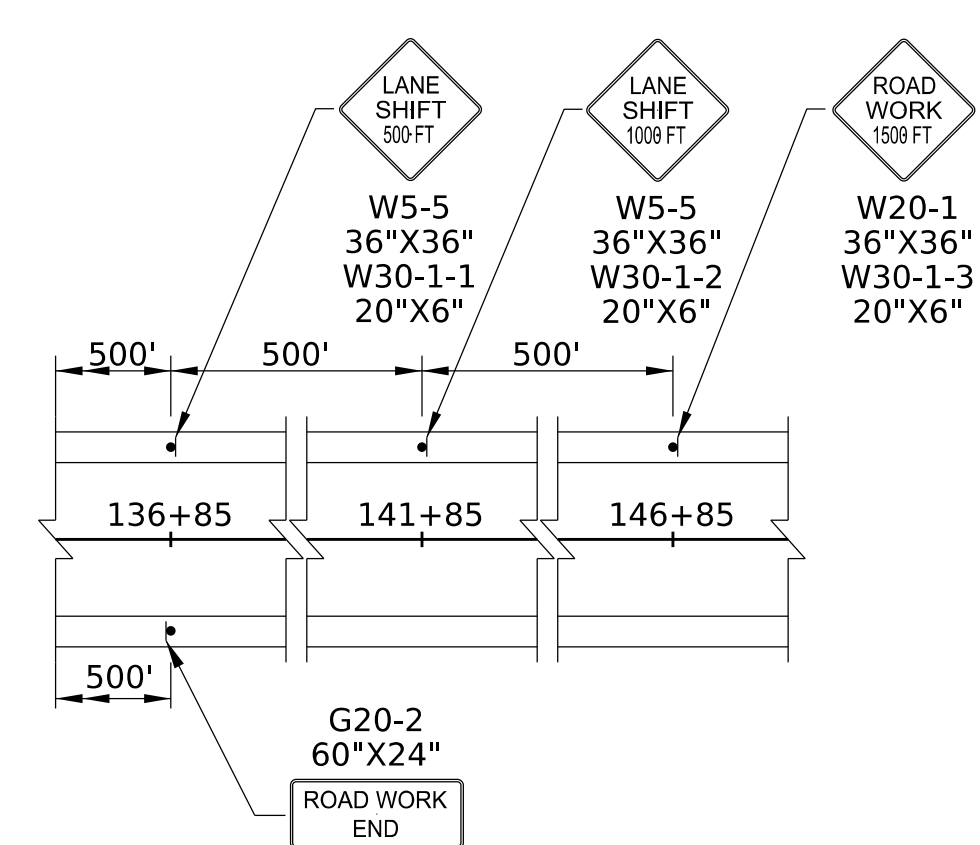
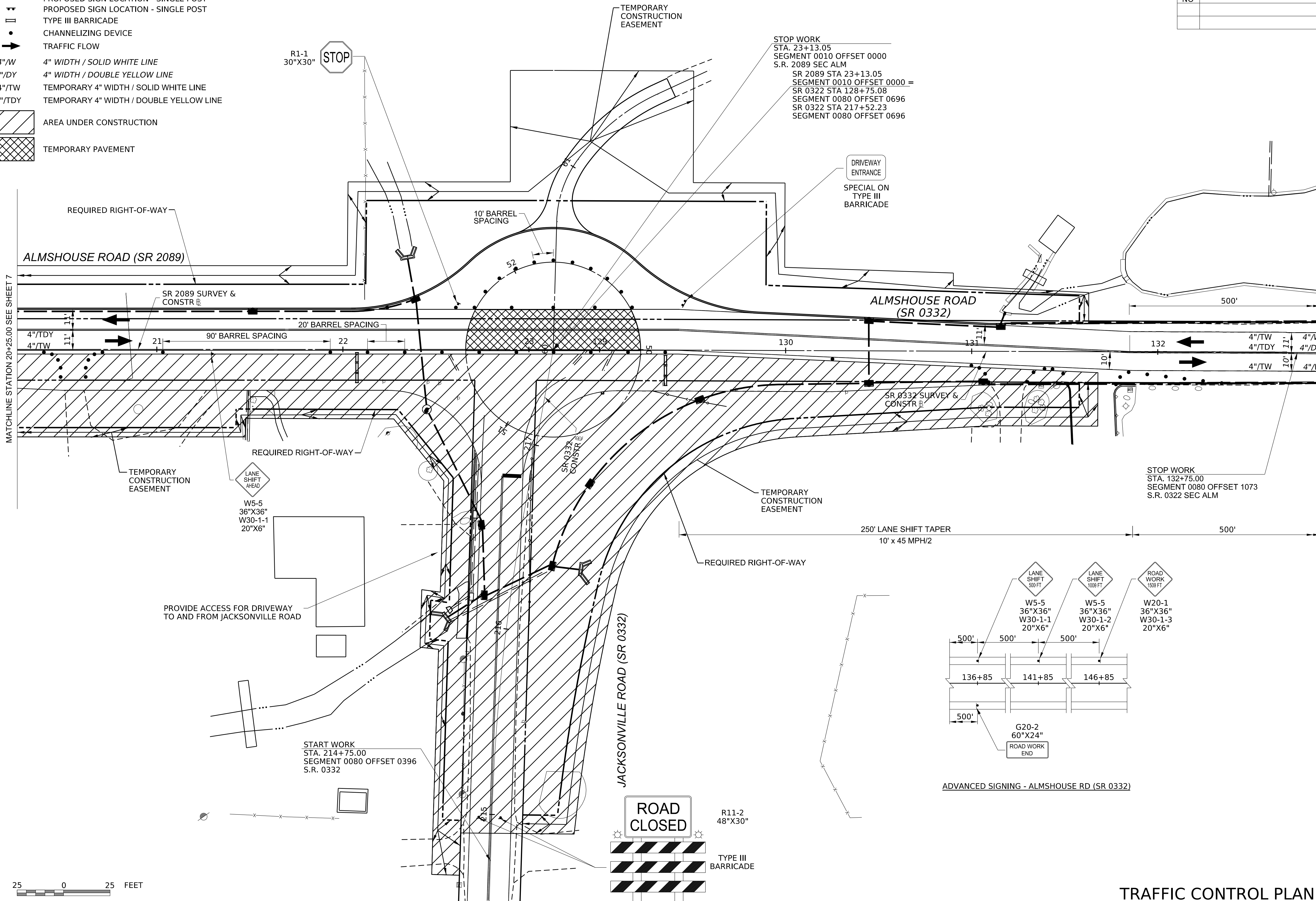


TRAFFIC CONTROL PLAN STAGE 3

DISTRICT	COUNTY	ROUTE	SECTION	SHEET		
6-0	BUCKS	2089	ALM	8 OF 8		
NORTHAMPTON TOWNSHIP						
REV NO	REVISIONS			DATE	BY	APPD

LEGEND

-  EXISTING SIGN LOCATION - SINGLE POST
-  PROPOSED SIGN LOCATION - SINGLE POST
-  TYPE III BARRICADE
-  CHANNELIZING DEVICE
-  TRAFFIC FLOW
-  4"/W 4" WIDTH / SOLID WHITE LINE
-  4"/DY 4" WIDTH / DOUBLE YELLOW LINE
-  4"/TW 4" WIDTH / SOLID WHITE LINE
-  4"/TDY 4" WIDTH / DOUBLE YELLOW LINE
-  AREA UNDER CONSTRUCTION
-  TEMPORARY PAVEMENT



TRAFFIC CONTROL PLAN STAGE 3