

SR 209 OVER MINE HOLLOW RUN BRIDGE PROJECT

New Philadelphia Borough, Schuylkill County

BRIDGE FEATURES:

- BUILT IN 1921 (REINFORCED CONCRETE SLAB)
- WIDENED IN 1949
- BRIDGE IS IN POOR CONDITION

PURPOSE:

- REPLACE THE EXISTING BRIDGE IN A WAY THAT WILL MAINTAIN THE EXISTING CROSSING, MEETS CURRENT DESIGN STANDARDS, AND MINIMIZES THE IMPACTS DURING CONSTRUCTION.

PROJECT SCHEDULE:

- PRELIMINARY AND FINAL ENGINEERING (PRESENT TO FALL 2026)
- AWARD CONTRACT (FALL/WINTER 2026)
- CONSTRUCTION (SPRING 2027 TO FALL/WINTER 2027)



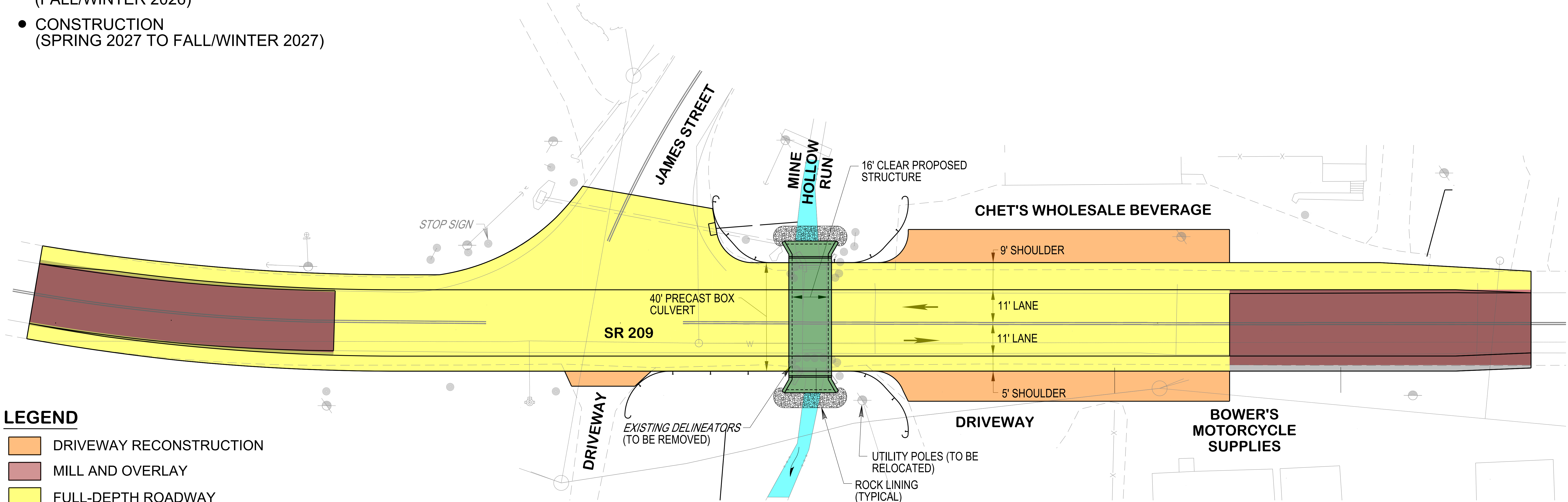
JAMES STREET



CHET'S WHOLESALE BEVERAGE



BOWER'S MOTORCYCLE SUPPLIES

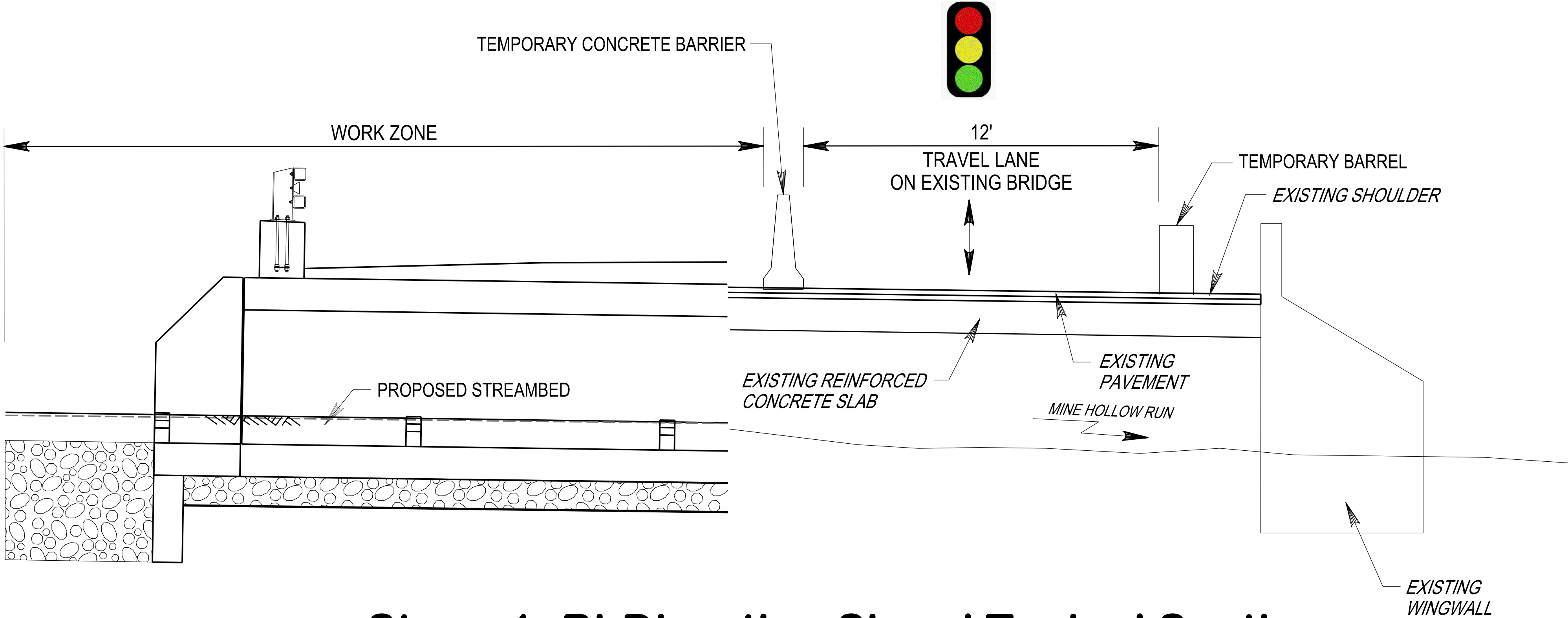


- LEGEND**
- DRIVEWAY RECONSTRUCTION
 - MILL AND OVERLAY
 - FULL-DEPTH ROADWAY
 - BRIDGE
 - MINE HOLLOW RUN

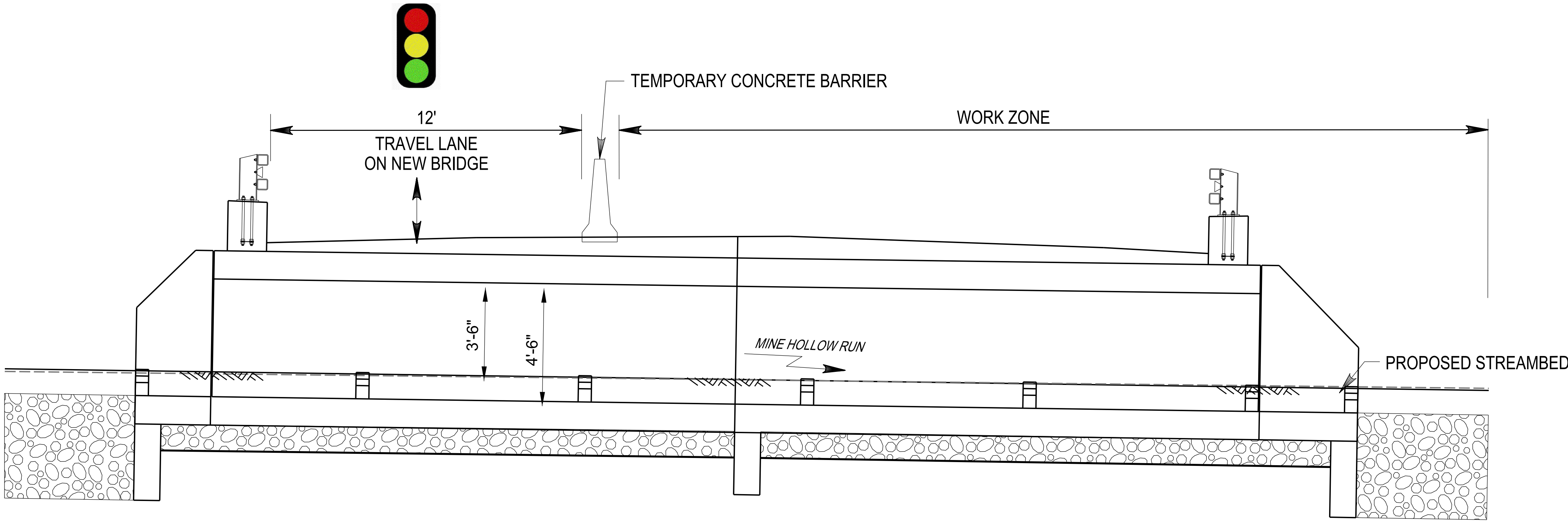
PRELIMINARY

SR 209 OVER MINE HOLLOW RUN BRIDGE PROJECT

New Philadelphia Borough, Schuylkill County



Stage 1- Bi-Direction Signal Typical Section



Stage 2- Bi-Direction Signal Typical Section



TYPICAL ROADWAY VIEW



TYPICAL ELEVATION VIEW

PRELIMINARY