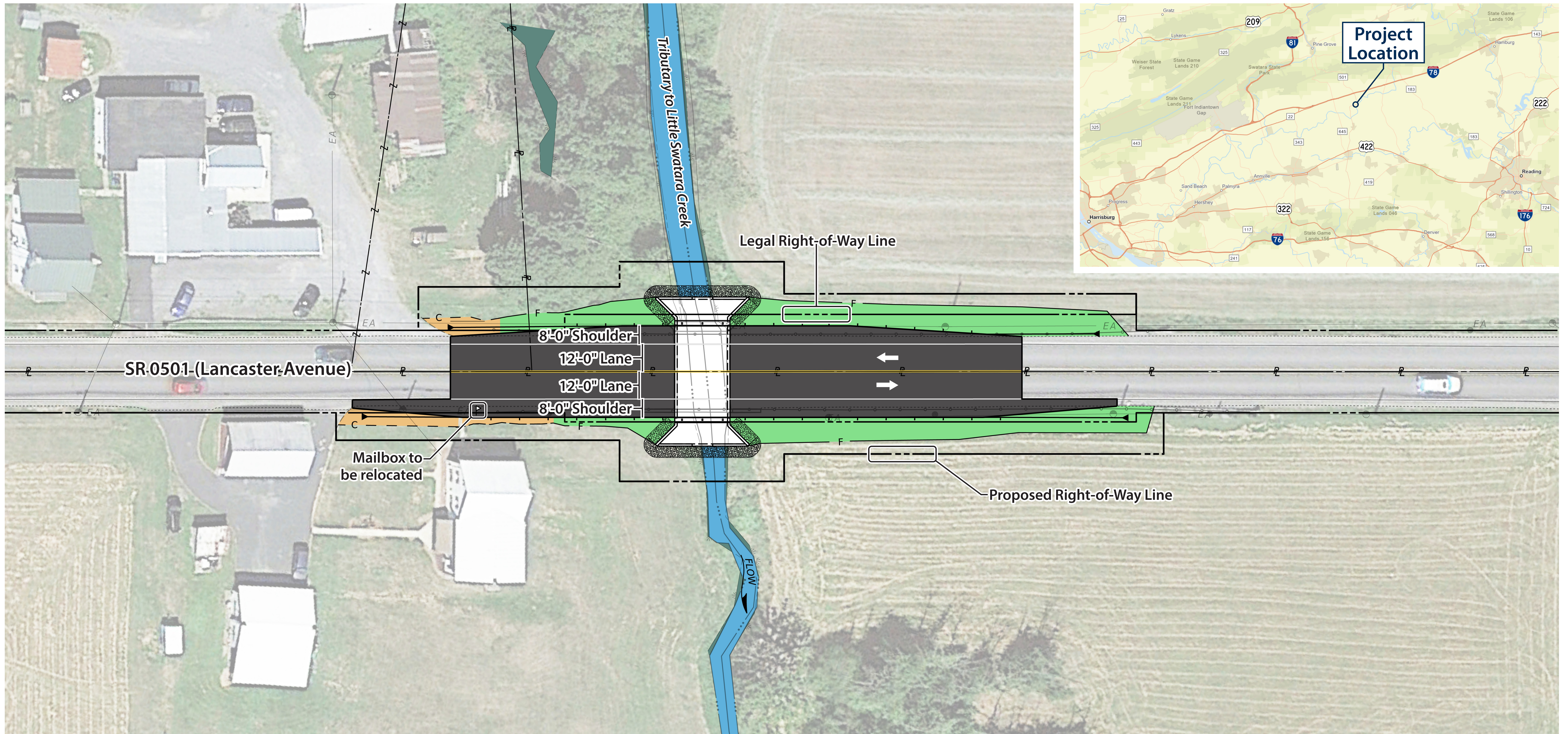
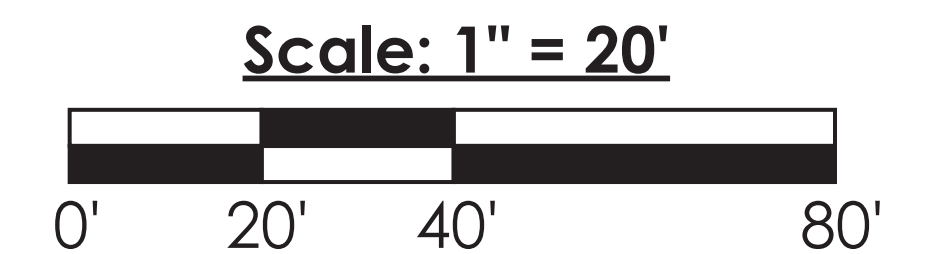


S.R. 0501 Over Tributary to Little Swatara Creek
ROADWAY PLAN

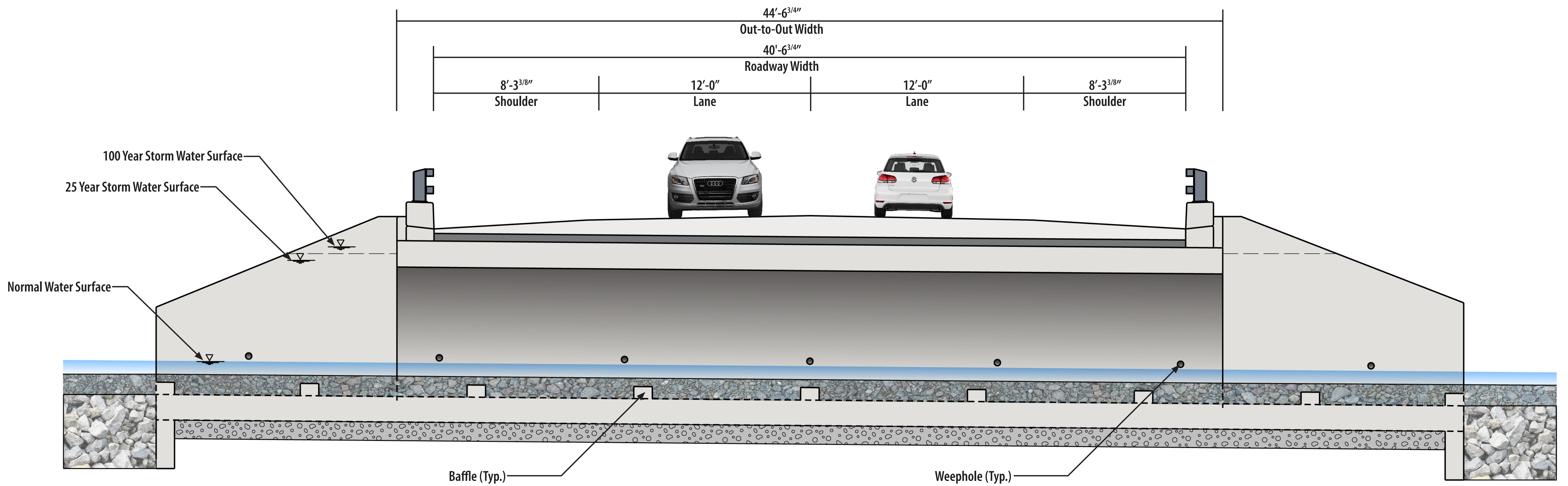


Legend

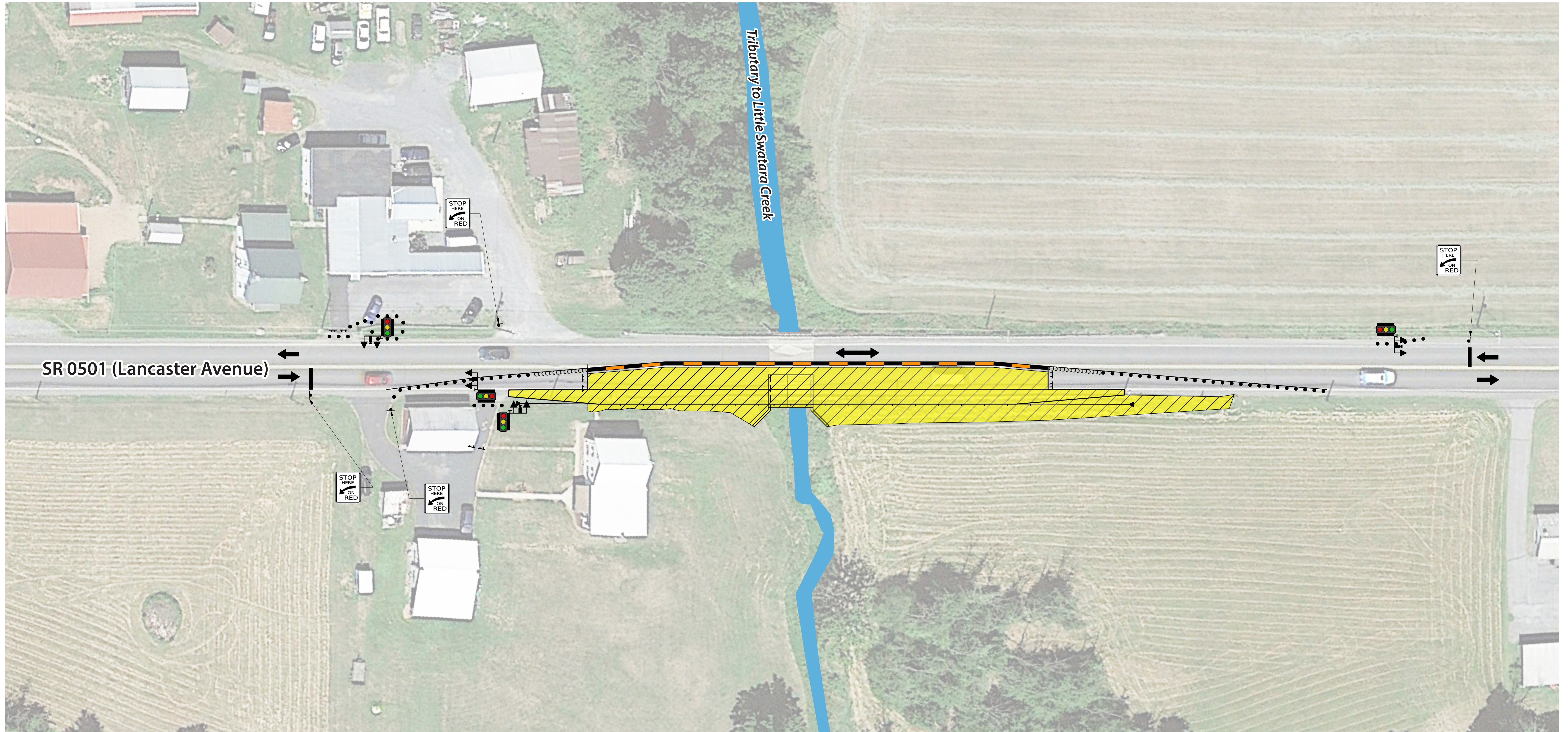
- | | | |
|--|---|---|
|  Proposed Roadway |  Wetland Areas |  Proposed Riprap |
|  Proposed Bridge Replacement |  Proposed Cut Areas |  Proposed Guide Rail |
|  Tributary to Little Swatara Creek |  Proposed Fill Areas | |



Proposed Typical Section

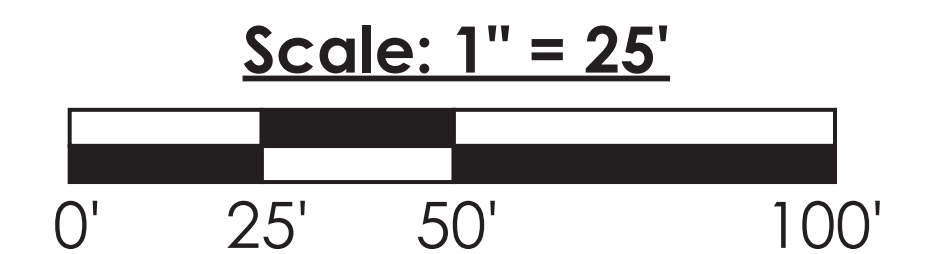


TEMPORARY ROADWAY PLAN - CONSTRUCTION STAGE 1

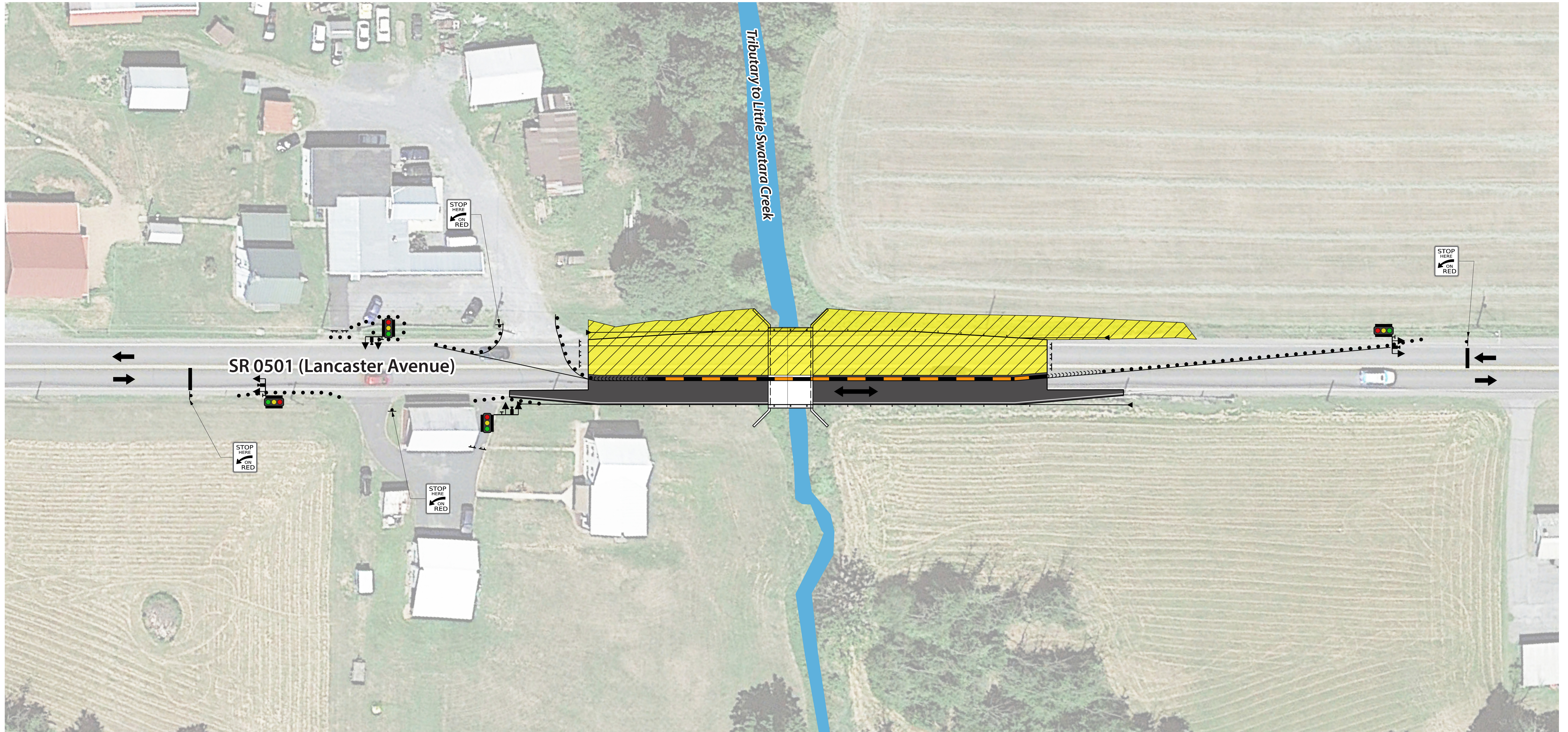


Legend

-  Proposed Construction Area
-  Tributary to Little Swatara Creek
-  Traffic Flow Direction
-  Temporary Signal Unit Location
-  Temporary Barrier



TEMPORARY ROADWAY PLAN - CONSTRUCTION STAGE 2



Legend

-  Proposed Construction Area
-  Tributary to Little Swatara Creek
-  Traffic Flow Direction
-  Temporary Signal Unit Location
-  Temporary Barrier

