

Plotfile: Sep 01, 2023 8:07am

FILE NAME: Z:\2022 projectspennsylvania\dept. of transportation\222147 - 04040 wor10 - 04040 final design\02_drawing\Transportation\DET222147_01.dwg
USER: rmas

GENERAL NOTES

- THIS WORK CONSISTS OF THE MAINTENANCE OF TRAFFIC AND THE PROTECTION OF THE TRAVELING PUBLIC APPROACHING THE CONSTRUCTION AREA AND WITHIN THE LIMITS OF CONSTRUCTION.
- FURNISH, ERECT, PLACE, AND MAINTAIN TRAFFIC CONTROL SIGNS AND DEVICES AND MAINTAIN TRAFFIC DURING THE HOURS OF CONSTRUCTION AND AT ALL OTHER TIMES IN ACCORDANCE WITH THE METHODS INDICATED ON THESE DRAWINGS AND:
 - THE SPECIAL PROVISIONS OF THE CONTRACT.
 - FEDERAL HIGHWAY ADMINISTRATION MANUAL ON UNIFORM TRAFFIC CONTROL DEVICES (MUTCD).
 - PUBLICATION 213, WORKZONE TRAFFIC CONTROL GUIDELINES.
 - PUBLICATION 212, OFFICIAL TRAFFIC CONTROL DEVICES.
 - PUBLICATION 35, QUALIFIED PRODUCTS LIST FOR CONSTRUCTION (BULLETIN 15).
 - PUBLICATION 408, SPECIFICATIONS
 - PUBLICATION 236, HANDBOOK OF APPROVED SIGNS.
 - PUBLICATION 46, TRAFFIC ENGINEERING MANUAL.
- THE CONTRACTOR IS TO NOTIFY LOCAL EMERGENCY UNITS (POLICE, FIRE, MEDICAL, ETC.), LOCAL BUSINESSES, PENNDOT PERMITS UNIT, LOCAL SCHOOL DISTRICTS, LOCAL MEDIA, PENNDOT ICC AT 570-963-4058 AND PENNDOT DISTRICT 4-0 C.R.C. AT 570-963-4044 TWO (2) WEEKS AND ALSO TWENTY-FOUR HOURS PRIOR TO THE START OF WORK OR AT THE START OF A NEW CONSTRUCTION PHASE AND WHEN ROAD IS OPEN TO UNRESTRICTED TRAFFIC.
- CONTRACTOR IS TO PROVIDE NOTIFICATION TO THE INSPECTOR-IN-CHARGE FOR THE FOLLOWING:
 - START OF PHYSICAL WORK - SEVEN CALENDAR DAYS
 - WIDTH, HEIGHT, OR WEIGHT RESTRICTIONS TO ANY ROADWAY - TEN WORKING DAYS (EXCLUDING STATE HOLIDAYS) NOTE: RESTRICTIONS ARE FROM THE PRE-CONSTRUCTION WIDTH, HEIGHT, OR WEIGHT RESTRICTION.
 - REMOVAL OF WIDTH, HEIGHT, OR WEIGHT RESTRICTIONS TO ANY ROADWAY - IMMEDIATELY UPON REMOVAL.
 - START OF ANY OPERATION AFFECTING TRAFFIC (LANE CLOSURES, TOTAL CLOSURES, ETC.) EVEN CALENDAR DAYS WITH A CONFIRMATION THE MORNING THE OPERATION BEGINS.
- LIMIT CONCURRENT SIDEWALK HANDICAP RAMP CONSTRUCTION TO ONE QUADRANT OF EACH INTERSECTION. ANYWHERE THAT PEDESTRIANS ARE BEING DETOURED THROUGH THE OTHER THREE CORNERS OF AN INTERSECTION, ALL THREE CORNERS SHALL MAINTAIN PEDESTRIAN ACCESS AT ALL TIMES. REOPEN ADA RAMPS AT INTERSECTION CORNERS BEFORE MOVING ONTO THE NEXT QUADRANT. PROVIDE A PEDESTRIAN DETOUR PER PUBLICATION 213, PATA 219 WORKZONE TRAFFIC CONTROL GUIDELINES.
- THE SAFETY FOR PEDESTRIANS WILL ALSO BE MAINTAINED AT ALL TIMES WITHIN THE LIMITS OF CONSTRUCTION AND APPROACHING THE CONSTRUCTION AREA.
- ALL SIGNS TO BE MOUNTED ON TYPE III BARRICADES UNLESS OTHERWISE NOTED.
- COORDINATE WORK ZONE SIGNING AND OPERATIONS WITH PROJECTS IN THE AREA.
- ALL TRAFFIC CONTROL DEVICES SHALL BE NEW OR LIKE NEW CONDITION AND MAINTAINED AS SUCH.
- REFER TO ITEM NO. 0901-0001 - MAINTENANCE AND PROTECTION OF TRAFFIC DURING CONSTRUCTION, WITHIN THE PROJECT CONTRACT FOR ADDITIONAL INFORMATION PERTAINING TO THIS PROJECT.
- REFER TO THE CONSTRUCTION REQUIREMENTS, CONSTRUCTION RESTRICTIONS, AND HOLIDAY RESTRICTIONS, WITHIN THE PROJECT CONTRACT FOR ADDITIONAL INFORMATION PERTAINING TO THIS PROJECT.
- REFER TO PUBLICATION 213, WORKZONE TRAFFIC CONTROL GUIDELINES, GENERAL NOTES SECTIONS (A) THROUGH (I) FOR ADDITIONAL INFORMATION.

TABULATION OF TRAFFIC CONTROL SEPARATE PAY ITEMS			
ITEM NO.	ITEM	UNIT	TOTAL
0901-0240	ADDITIONAL TRAFFIC CONTROL SIGNS	SF	50

TABULATION OF TRAFFIC CONTROL DEVICES INCLUDED IN ITEM NO 0901-0001 MAINTENANCE AND PROTECTION OF TRAFFIC DURING CONSTRUCTION (SEE SPECIAL PROVISIONS) PROJECT SUMMARY (FOR INFORMATION ONLY)			
NOMENCLATURE	DESCRIPTION	SIZE	QUANTITY
R11-2	ROAD CLOSED	48"x30"	5
R11-3A	ROAD CLOSED 0.2 MILES AHEAD LOCAL TRAFFIC ONLY	60"x30"	1
R11-3A	ROAD CLOSED 1.9 MILES AHEAD LOCAL TRAFFIC ONLY	60"x30"	1
R11-4	ROAD CLOSED TO THRU TRAFFIC	60"x30"	1
M4-8A	END DETOUR	24"x18"	2
M4-9L	DETOUR, LEFT	30"x24"	1
M4-9R	DETOUR, RIGHT	30"x24"	2
M4-9S	DETOUR, STRAIGHT	30"x24"	6
M4-9SL	LEFT ADVANCE DETOUR	30"x24"	1
M4-9SR	RIGHT ADVANCE DETOUR	30"x24"	2
M4-10L	DETOUR ARROW, LEFT	48"x18"	1
M4-10R	DETOUR ARROW, RIGHT	48"x18"	1
W20-2; W30-1-6	ADVANCE DETOUR; AHEAD PANEL	36"x36"	1
W20-2; W30-1-3	ADVANCE DETOUR; DISTANCE 1500 FT PANEL	36"x36"	1
W20-3; W30-1-2	ROAD CLOSED; DISTANCE 1000 FT PANEL	36"x36"	2
W20-3; W30-1-1	ROAD CLOSED; DISTANCE 500 FT PANEL	36"x36"	2
W20-3; W30-1-6	ROAD CLOSED; AHEAD PANEL	36"x36"	1
W20-3A	ROAD OPEN TO	48"x36"	1
W23-101	ROAD TO BE CLOSED	96"x48"	2
TYPE III BARRICADE *			
WARNING LIGHTS, TYPE B *			

* PROVIDE A SUFFICIENT NUMBER FOR SIGNING AND TO CLOSE THE ROADWAY

LEGEND

- TEMPORARY TRAFFIC CONTROL SIGN
- TYPE III BARRICADE (WITH OR WITHOUT SIGN(S) ATTACHED)
- SIGN/TAG
- TYPE B FLASHER, AMBER
- TRAFFIC DIRECTION
- DETOUR ROUTE - (12,985 FT) OR (2.5 MILES)

DISTRICT	COUNTY	ROUTE	SECTION	SHEET	
4-0	WAYNE	3030	D50	1 OF 3	
WAYMART BOROUGH					
REVISION NUMBER	REVISIONS			DATE	BY

TRAFFIC CONTROL PLAN SHEET INDEX

DESCRIPTION	SHEET
GENERAL NOTES, QUANTITIES, AND CONSTRUCTION TASKS	1
TRAFFIC CONTROL PLAN - DETOUR	2
TRAFFIC CONTROL PLAN - SIGN INDEX	3

CONSTRUCTION TASKS MAINTENANCE AND PROTECTION OF TRAFFIC DURING CONSTRUCTION

- ERECT TRAFFIC CONTROL DEVICES AS INDICATED ON THE TRAFFIC CONTROL PLAN DETOUR.
- CLOSE SR 3030 AT THE CULVERT
- REPLACE THE CULVERT. REFER TO THE CONSTRUCTION PLANS FOR ADDITIONAL INFORMATION.
- COMPLETE INSTALLATION OF PERMANENT SIGNS AND PAVEMENT MARKINGS. REFER TO THE SIGNING AND PAVEMENT MARKING PLAN FOR ADDITIONAL INFORMATION.
- REMOVE THE TRAFFIC CONTROL DEVICES AND OPEN SR 3030 TO TRAFFIC.

TRAFFIC CONTROL PLAN

RECOMMENDED _____ 20____

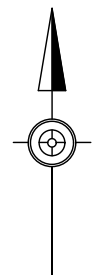
 DISTRICT TRAFFIC ENGINEER

PREPARED BY:



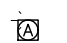
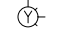


LaBella
 Powered by partnership
 1000 DUNHAM DRIVE, SUITE B
 DUNMORE, PA 18512
 570-342-3101

09/01/2023

DISTRICT	COUNTY	ROUTE	SECTION	SHEET
4-0	WAYNE	3030	D50	2 OF 3
WAYMART BOROUGH				
REVISION NUMBER	REVISIONS	DATE	BY	

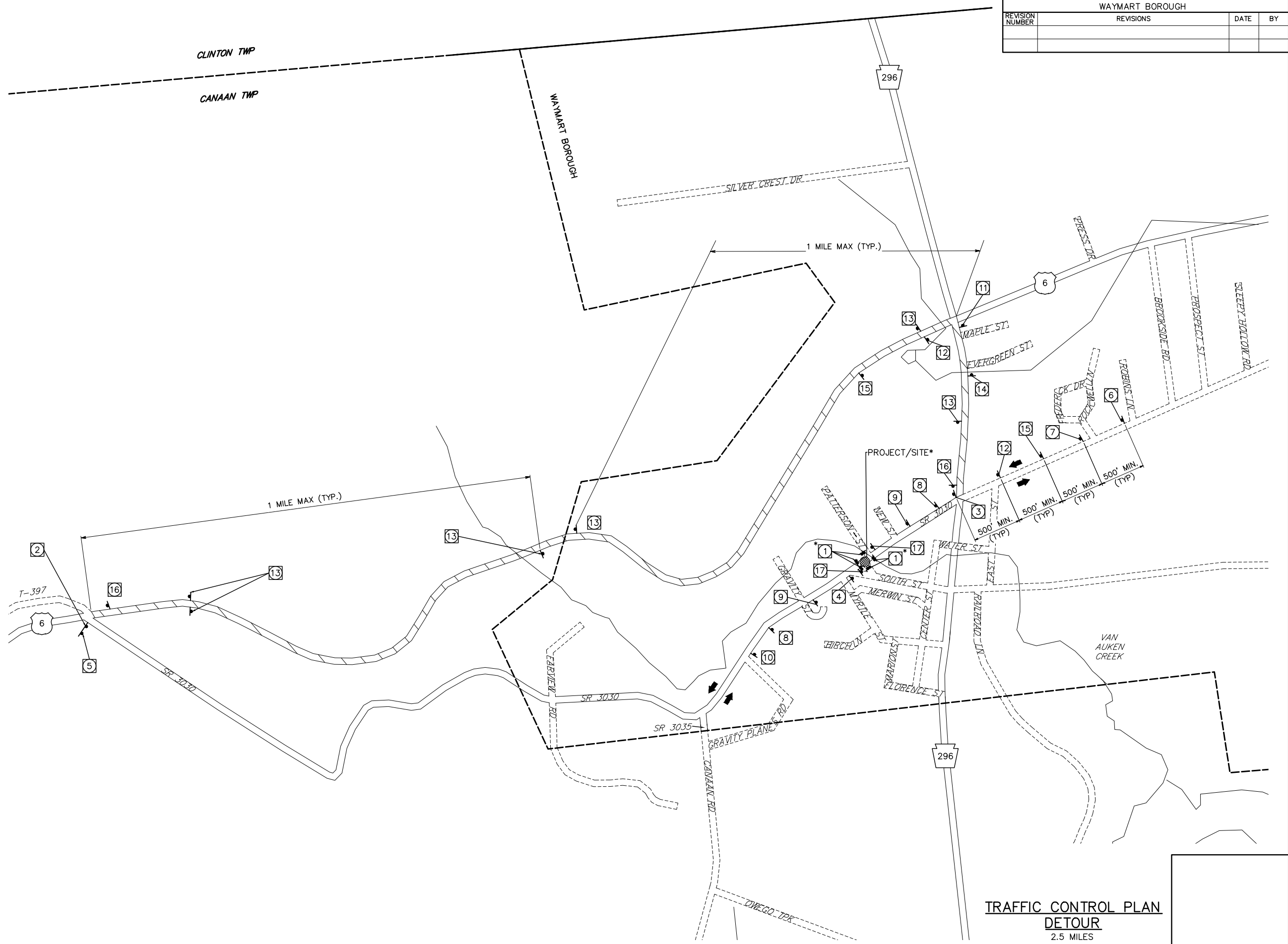


LEGEND

-  - TEMPORARY TRAFFIC CONTROL SIGN
-  - TYPE III BARRICADE (WITH OR WITHOUT SIGN(S) ATTACHED)
-  - SIGN/TAG
-  - TYPE B FLASHER, AMBER
-  - TRAFFIC DIRECTION
-  - DETOUR ROUTE - (12,985 FT) OR (2.5 MILES)

NOTES:

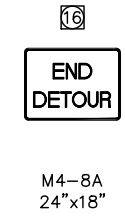
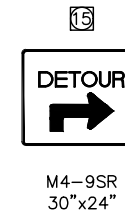
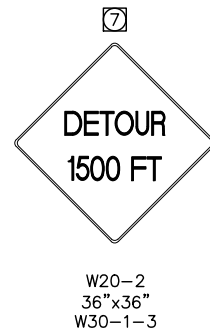
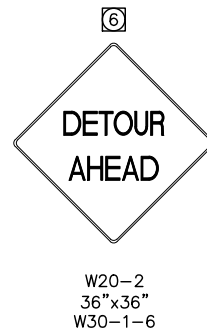
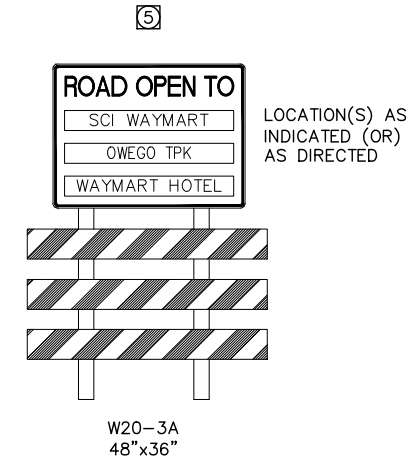
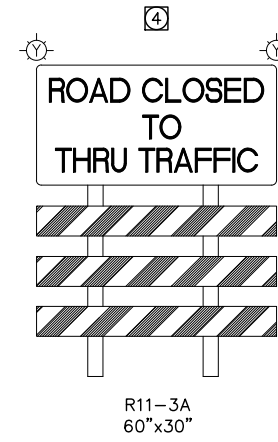
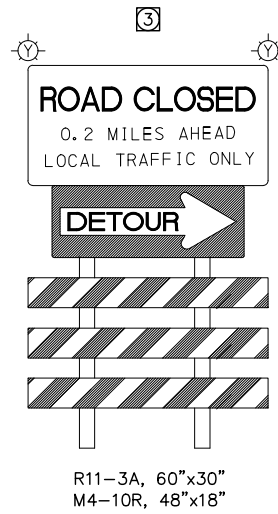
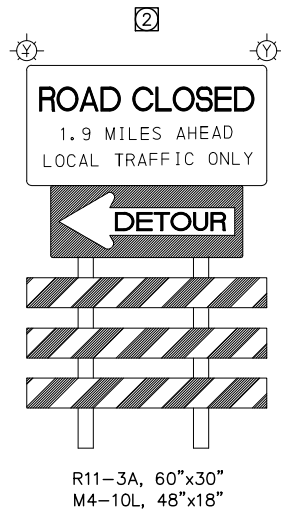
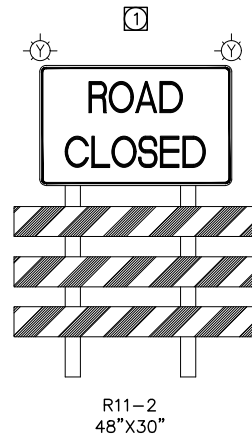
1. POSITION ALL SIGNS AT THE ADVANCE APPROACHES TO THE WORK FOR MOST EFFECTIVE VISIBILITY. DO NOT HINDER VISIBILITY OF THE PERMANENT SIGNS IN-PLACE. PROTECT SIGNS WITH DEVICES AS NEEDED.
2. FOR SIGN INDEX, REFER TO SHEET 3.
3. CUT BACK VEGETATION(S) ALONG ROADSIDES THAT WILL OBSTRUCT VISIBILITY OF SIGN LOCATIONS.
4. DO NOT BLOCK INTENDED ACCESS POINTS FOR RESIDENCES OR BUSINESSES SURROUNDING THE PROJECT SITE.
5. MAINTAIN A TWO-WAY ENTRANCE/EXIT TRAFFIC PATTERN ALONG PATTERSON ST.
6. ALLOW FOR ONLY ENTRY/EXIT TRAFFIC TO BUSINESSES ALONG SOUTH ST, AT A MINIMUM.
7. * PROVIDE COMPLETE CLOSURE ALONG ALL ENDS OF CULVERT/WORK SITE WITH TYPE III BARRICADES. UTILIZE/SUPPLEMENT WITH TEMPORARY CONCRETE BARRIER SECTIONS WHERE NEEDED, AS DIRECTED.
8. THE REGULATORY SPEED LIMIT ALONG THIS SECTION OF SR 3030 IS 30 MPH.
9. THE REGULATORY SPEED LIMIT ALONG THIS SECTION OF SR 0296 IS 25 MPH.
10. THE MAXIMUM REGULATORY SPEED LIMIT ALONG THIS SECTION OF SR 0006 IS 45 MPH.





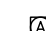
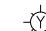


**TRAFFIC CONTROL PLAN
DETOUR**
2.5 MILES

NOT TO SCALE

DISTRICT	COUNTY	ROUTE	SECTION	SHEET
4-0	WAYNE	3030	D50	3 OF 3
WAYMART BOROUGH				
REVISION NUMBER	REVISIONS	DATE	BY	



LEGEND

-  - TEMPORARY TRAFFIC CONTROL SIGN
-  - TYPE III BARRICADE (WITH OR WITHOUT SIGN(S) ATTACHED)
-  - SIGN/TAG
-  - TYPE B FLASHER, AMBER
-  - TRAFFIC DIRECTION
-  - DETOUR ROUTE - (12,985 FT) OR (2.5 MILES)



** APPROPRIATE DATE
THIS SIGN TO BE PLACED AT BOTH ENDS OF THE PROJECT SITE 2 WEEKS PRIOR TO IMPLEMENTING DETOUR.
(REMOVE ONCE DETOUR IS IN PLACE)

TRAFFIC CONTROL PLAN SIGN INDEX

NOT TO SCALE