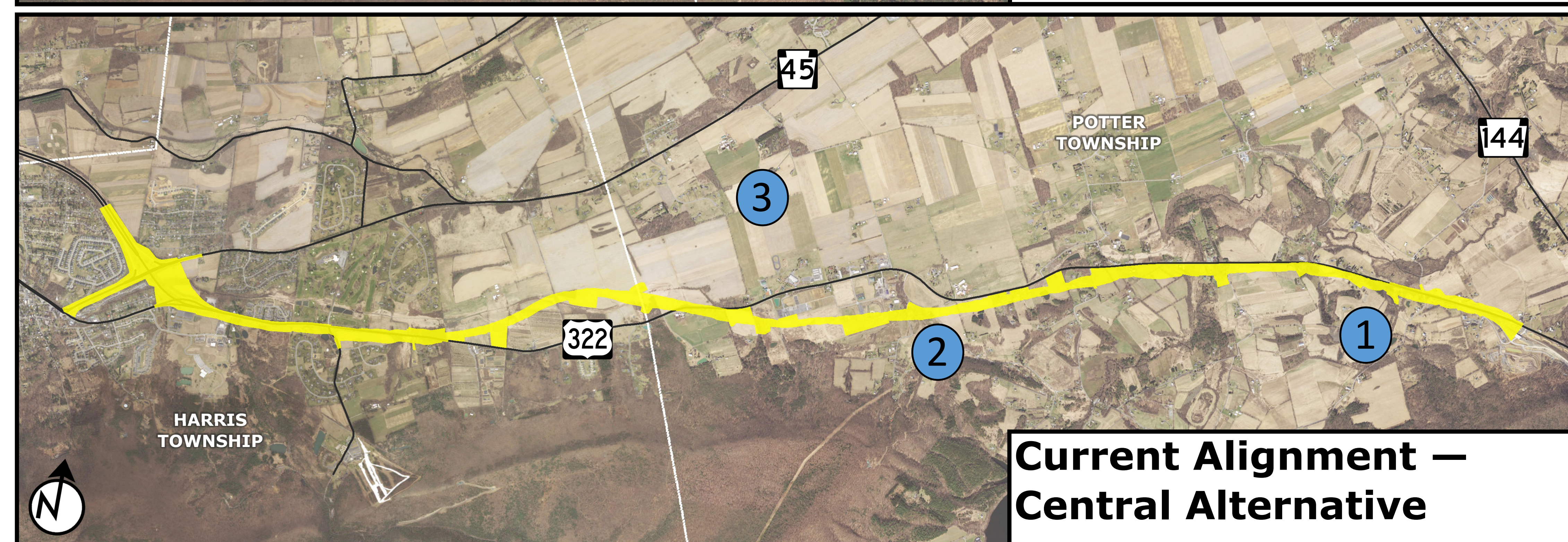
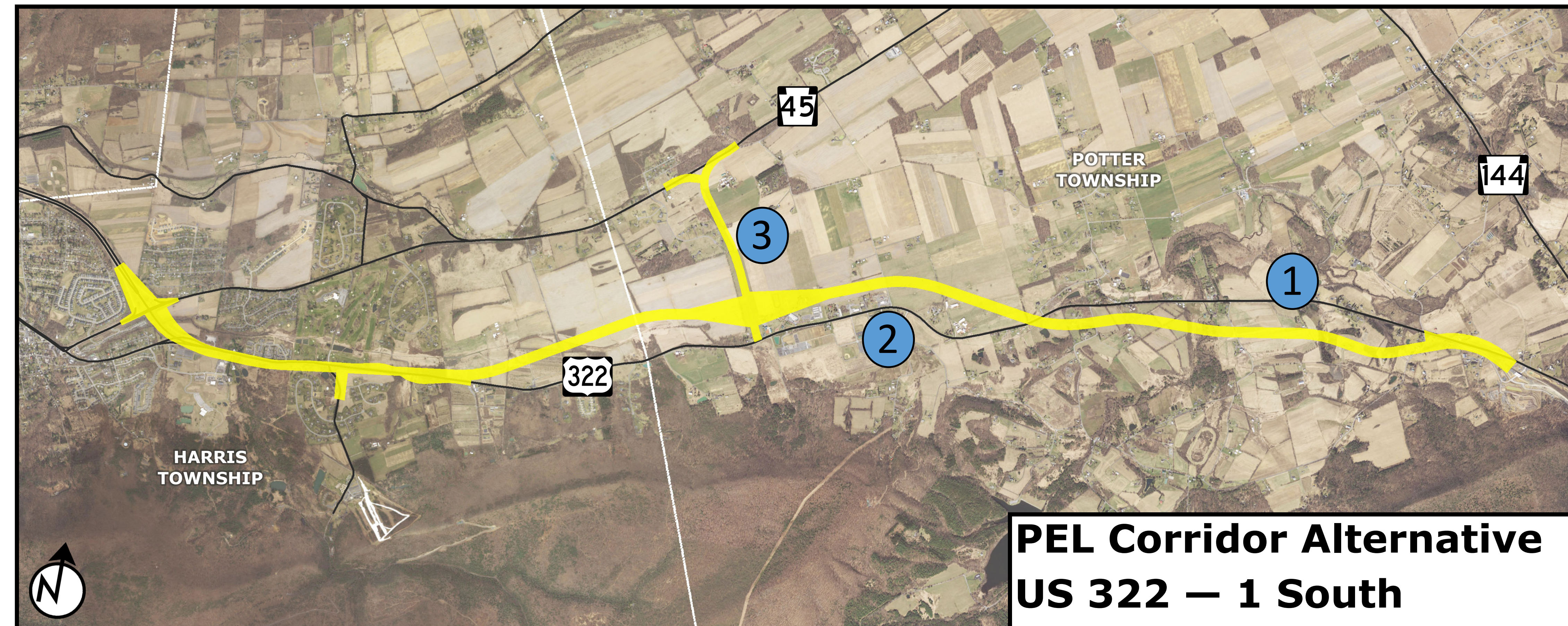


state college area CONNECTOR



- 1 PEL corridor was further south of US 322 in the east. The current alignment remains closer to existing US 322 to minimize effects to farm operations and other environmental features south of US 322.
- 2 Central Alternative remains south of US 322 for a longer distance than was proposed in the PEL study. This modification was developed to minimize effects on farm operations and other environmental features along with local officials input.
- 3 Removed the PA 45 Connector and interchange.