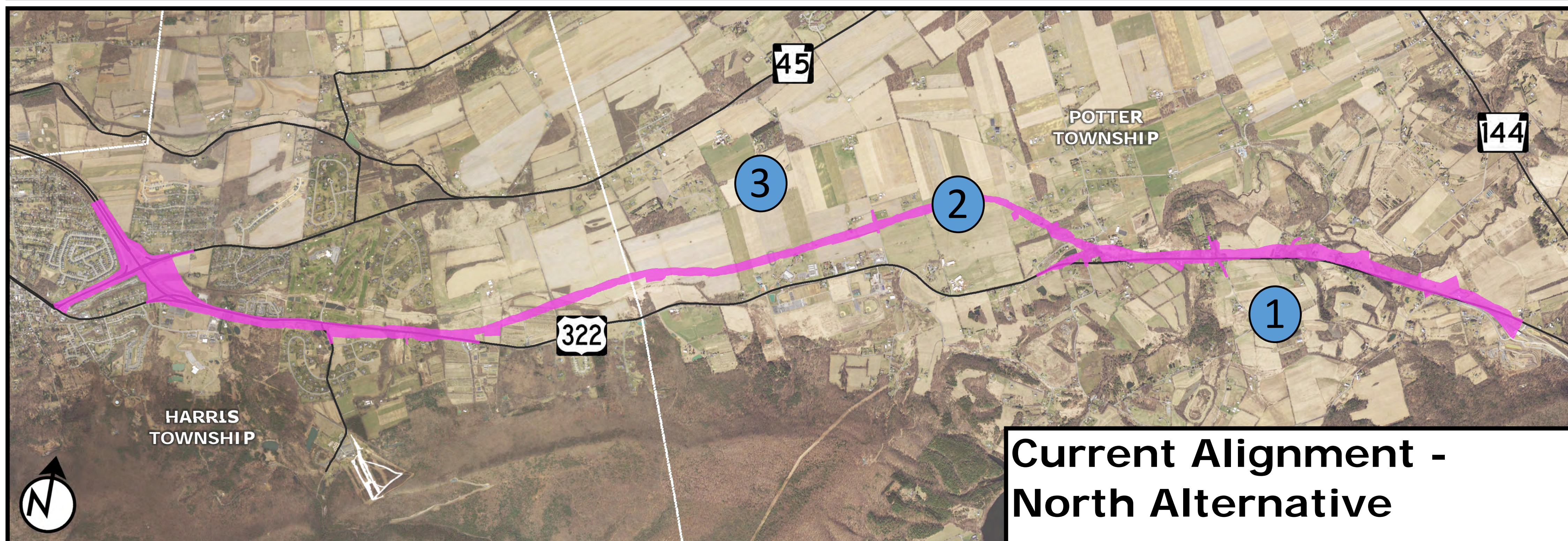
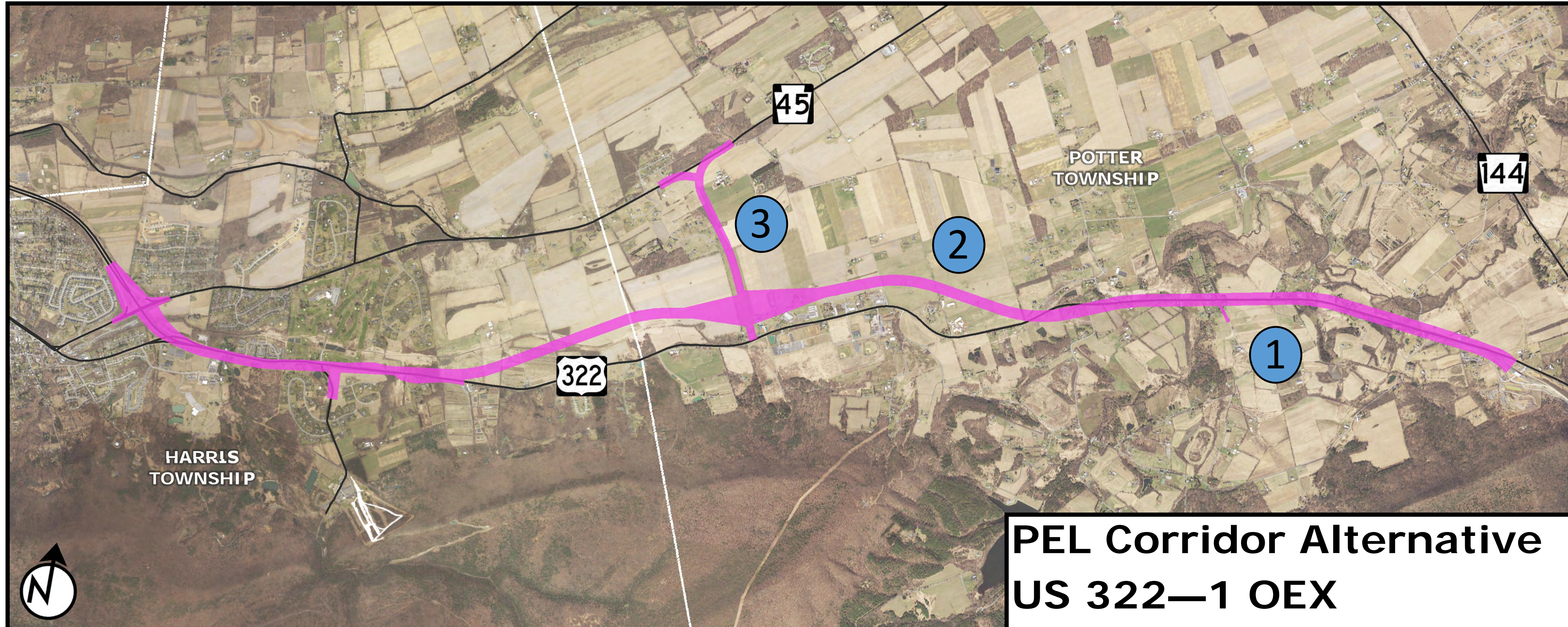


state college area CONNECTOR



- 1 PEL corridor was centered on US 322. The North Alternative alignment shifts further north to minimize effects along the south side of existing US 322.
- 2 North Alternative departs from the PEL corridor by extending further north before turning to parallel existing US 322. Shift was incorporated to minimize effects to farm operations and other environmental features.
- 3 Removed the PA 45 Connector and interchange.

**North Alternative vs.
US 322-1OEX PEL Corridor**