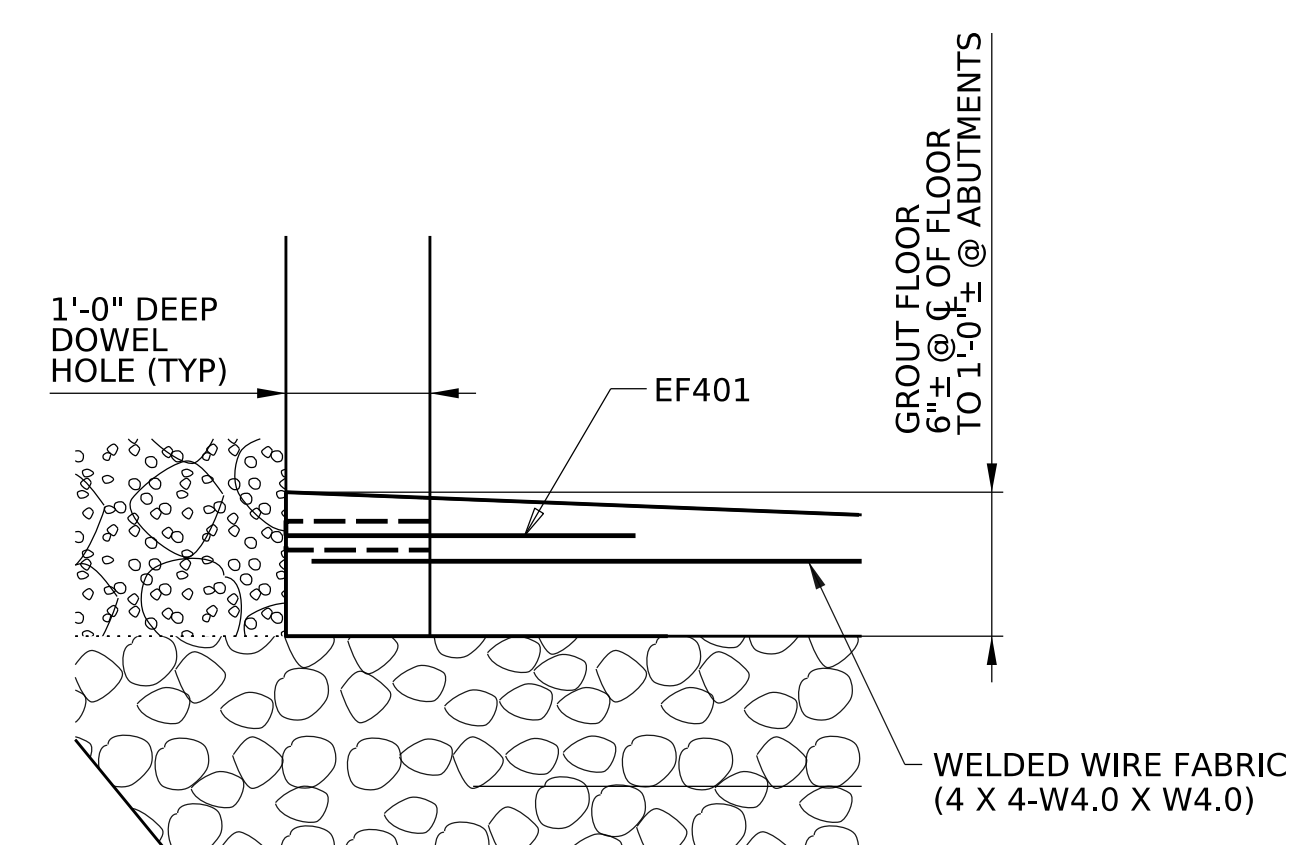
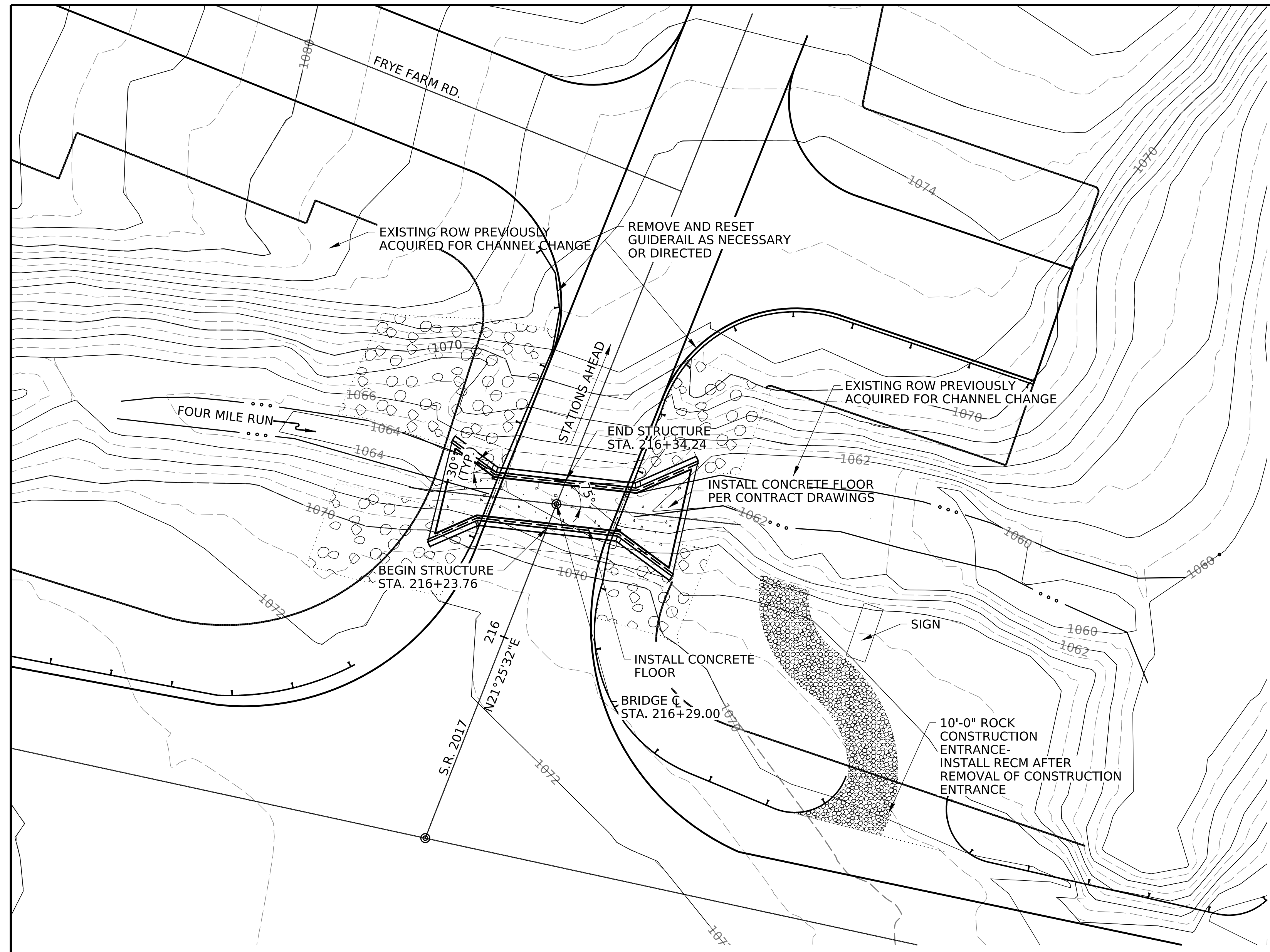
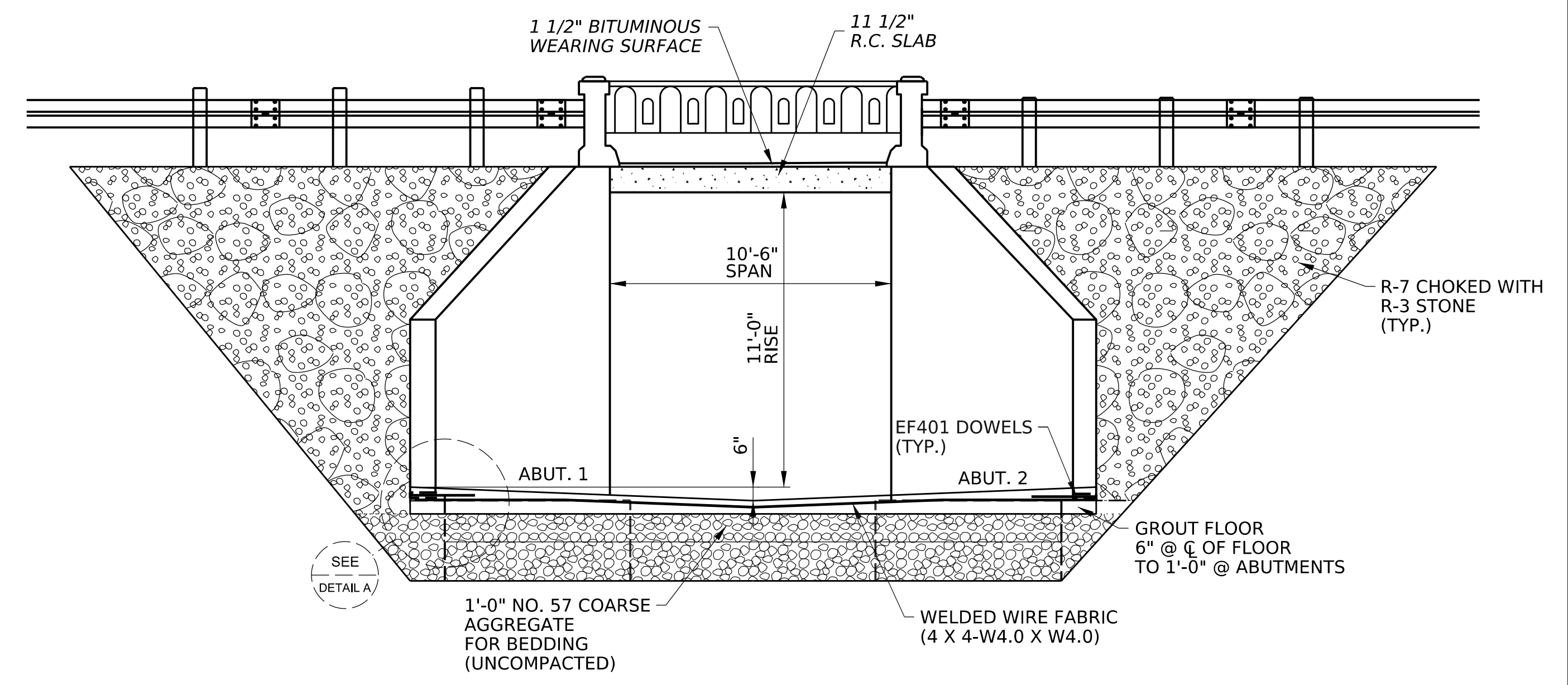


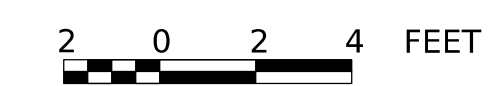
OPERATOR: jameswolfe
 FILE NAME: pw://PDED/PRAPPW01.penn.dot.ctb;Connect_Projects/Documents/OpenRoads_Projects/D12/62-Washington/62 2047 0040 0079 (116915) Scour Preservation/DESIGN/Bridge/CADD Files/64-2017-0100-2788/REVISED/017-5E1E0A-02768 1.14.w



DETAIL A
12 0 12 INCHES



ELEVATION (LOOKING UPSTREAM)



- LEGEND:**
- EXISTING STREAM
 - |— EXISTING GUIDERAIL
 - |— EXISTING CONTOUR

Mark	Description	By	Chk'd	Recm'd.	Date
REVISIONS					

S.R. 2017 PREVIOUSLY KNOWN AS L.R.
 BMS STR ID:64-2017-0100-2788 MPMS/ECMS PROJ: 116915 BRKEY: 36491

PRELIMINARY

COMMONWEALTH OF PENNSYLVANIA
DEPARTMENT OF TRANSPORTATION
 WESTMORELAND COUNTY
 S.R. 2017 SECTION 01M
 SEGMENT 0010 OFFSET 2788
 STA. 216+29.00
 OVER BRANCH OF FOURMILE RUN
 SCOUR REPAIR- SIMPLE SPAN CAST-IN-PLACE, CONCRETE SLAB
GENERAL PLAN, ELEVATION & SHEET INDEX

CLASSIFICATION OF EARTHWORK FOR STRUCTURES	RC-11M	06-01-10
BACKFILL AT STRUCTURES	RC-12M	11-01-22
DEWATERING DEVICES	RC-75M	06-01-10
TYPICAL WATERPROOFING & EXPANSION DETAILS	BC-788M	11-23-22

PREPARED BY:
 PENNSYLVANIA DEPARTMENT
 OF TRANSPORTATION
 ENGINEERING DISTRICT 12-0
 UNIONTOWN, PA. 15401

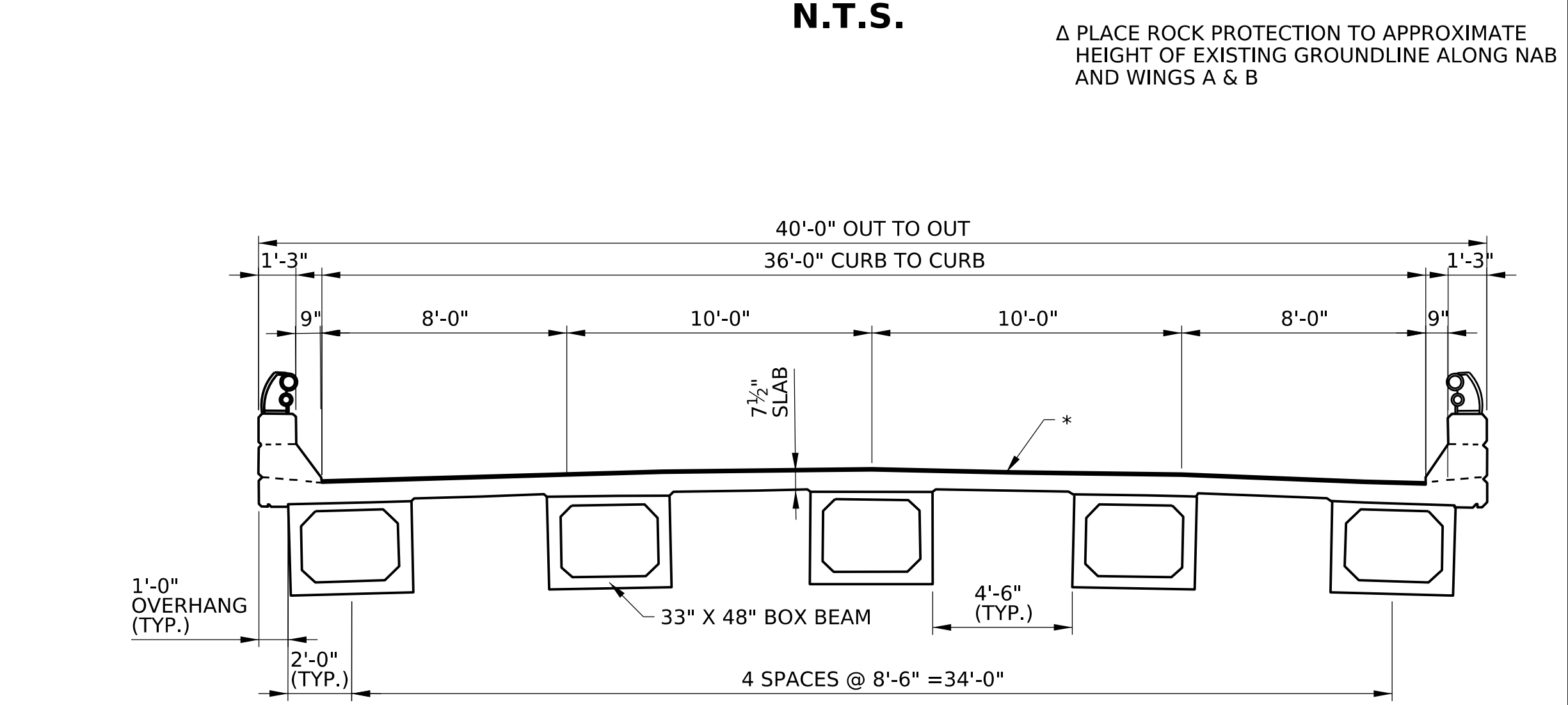
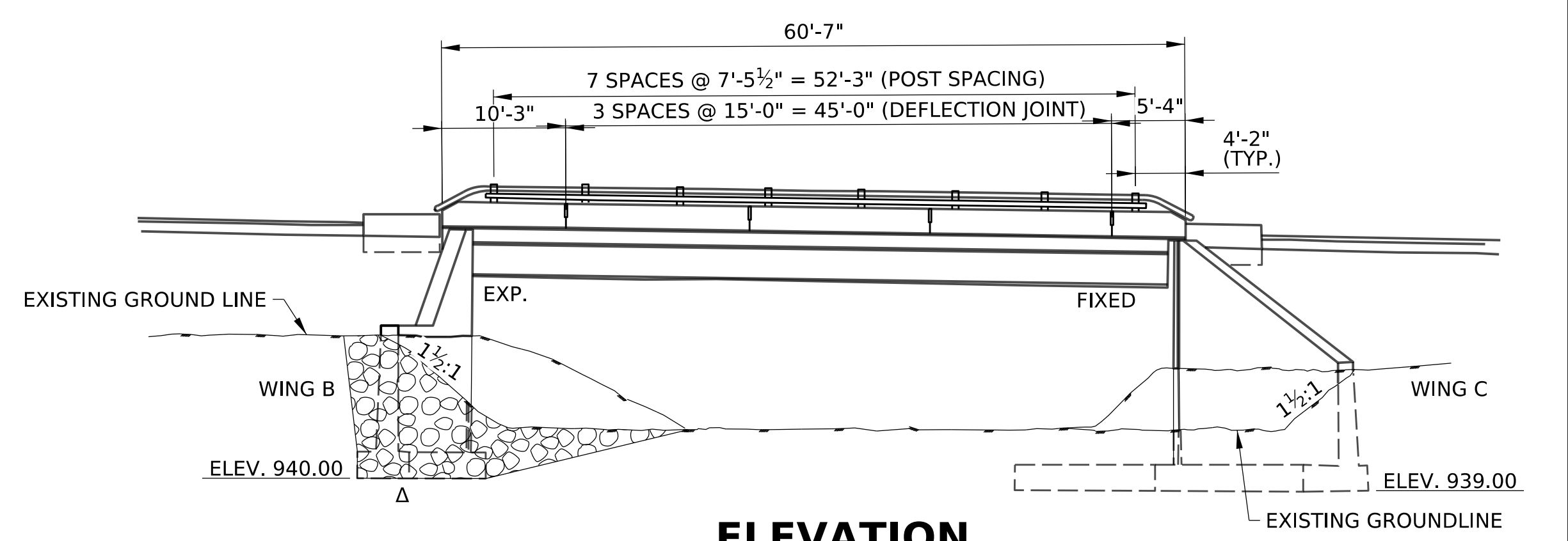
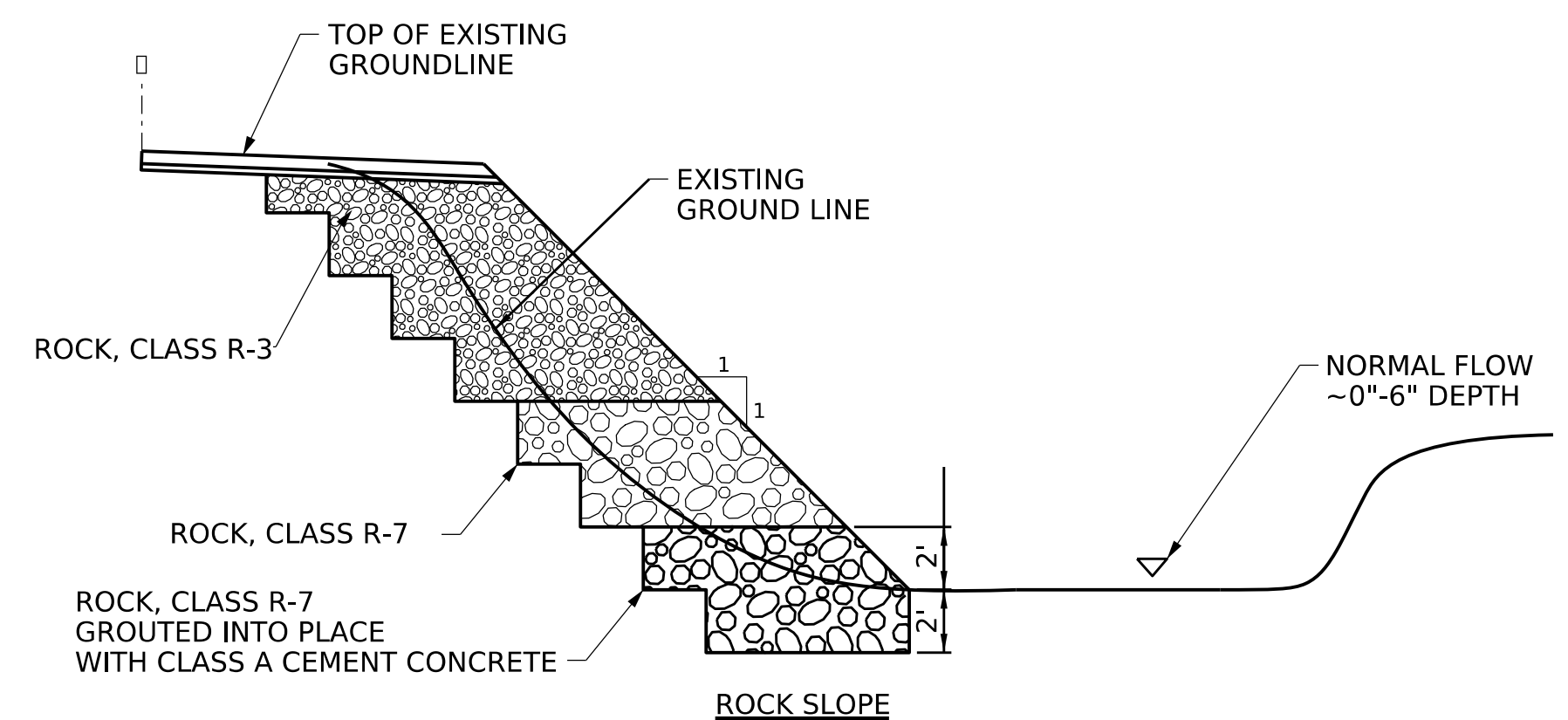
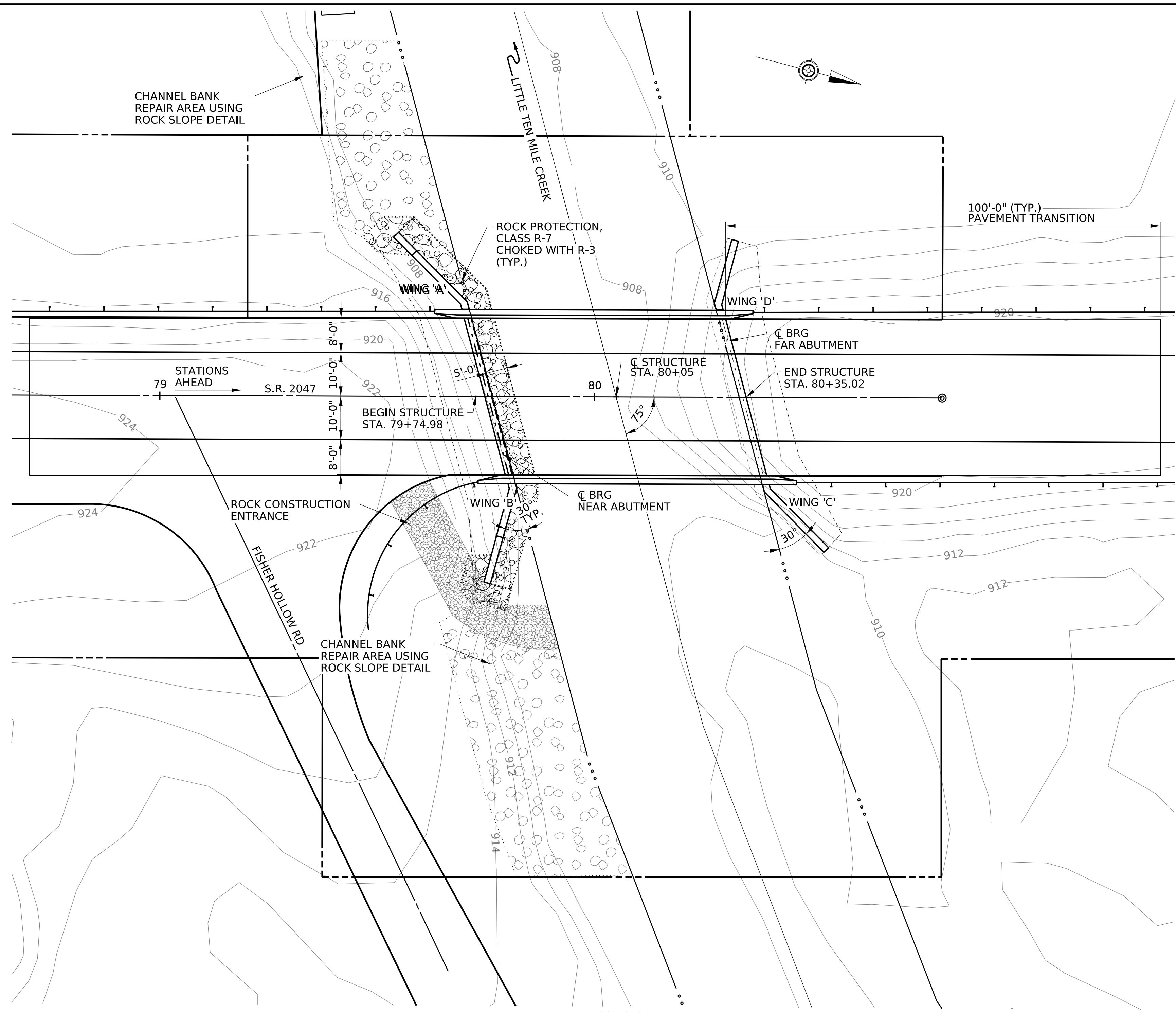
SIGNATURE _____ DATE _____

DES: CAS DWG: RJS CKD: JPW QA:

DESCRIPTION _____ DWG. NO. _____ APP. DATE _____
SUPPLEMENTAL DRAWINGS

RECOMMENDED _____ SHEET 1 OF 3
 _____ BRIDGE ENGINEER
S - 42503

OPERATOR: jameswolfe
 FILE NAME: pw://PDED/PRAPPW101.penn.dot.ic:Connect_Pjcts/Documents/OpenRoads_Projects/D12/62-Washington/62 2047 0040 0079 (116915) Scour Preservation/DESIGN/Bridge/CADD Files/62-2047-0040-0009/HEAD/625/SR27 024/04029-LEAD.dgn



- LEGEND:**
- EXISTING CONTOUR
 - o o — EXISTING STREAM
 - — — EXISTING GUIDERAIL

Mark	Description	By	Chk'd	Recm'd.	Date
REVISIONS					

S.R. 2047 PREVIOUSLY KNOWN AS L.R. 62089
 BMS STR ID: 62-2047-0040-0079 MPMS/ECMS PROJ: 116915 BRKEY: 35006

COMMONWEALTH OF PENNSYLVANIA
DEPARTMENT OF TRANSPORTATION

WASHINGTON COUNTY
S.R. 2047, SECTION 01M
 SEGMENT 0040 OFFSET 0079
 STA. 80+05.00
 OVER LITTLE TENMILE CREEK
 SCOUR REPAIR
GENERAL PLAN, TYPICAL SECTION & ELEVATION

RECOMMENDED _____	SHEET <u>1</u> OF <u>2</u>
BRIDGE ENGINEER	S - 42504

PRELIMINARY

PREPARED BY:
 PENNSYLVANIA DEPARTMENT
 OF TRANSPORTATION
 ENGINEERING DISTRICT 12-0
 UNIONTOWN, PA. 15401

SIGNATURE _____ DATE _____

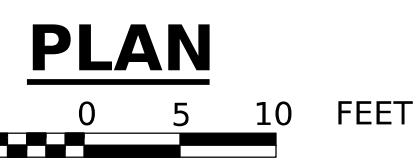
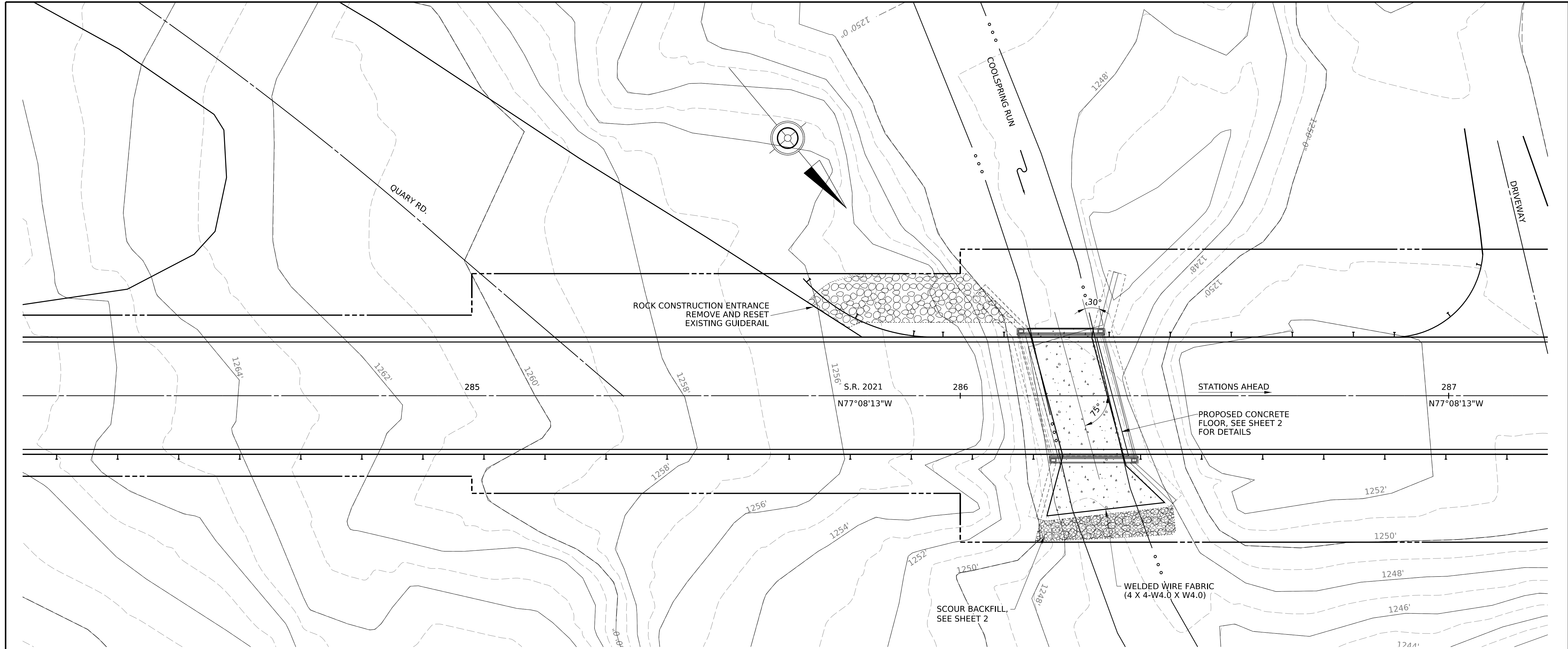
CLASSIFICATION OF EARTHWORK FOR STRUCTURES	RC-11M	06-01-10
BACKFILL AT STRUCTURES	RC-12M	11-01-22
DEWATERING DEVICES	RC-75M	06-01-10
TYPICAL WATERPROOFING & EXPANSION DETAILS	BC-788M	11-23-22

DES: CAS DWG: RJS CKD:JPW QA:

DESCRIPTION DWG. NO. APP. DATE

SUPPLEMENTAL DRAWINGS

OPERATOR: jameswolfe
 FILE NAME: pw://PDED/PRAPPW01.pennidot.ctb:Connect_P\Projects\Documents\OpenRoads_P\Projects\Projects\62-2047-0040-0079 (116915) Scour Preservation\DESIGN\Bridges\CADD Files\26-2021-0120-0000\7262-2021-0120-0000\7262-2021-0120-0000.dwg



MARK	SIZE	NUMBER	LENGTH	TYPE	A	B	C	D	E	R	REMARKS
CONCRETE FLOOR											
EF401	4	58	2'-3"	STR							INCLUDES 1'-0" EMBEDMENT

PRELIMINARY

LEGEND:

- ○ ○— EXISTING STREAM
- |—|—|— EXISTING GUIDERAIL
- |—|—|— EXISTING CONTOUR
- --- --- LEGAL R/W

Mark	Description	By	Chk'd	Recm'd.	Date
REVISIONS					

S.R. 2021 PREVIOUSLY KNOWN AS L.R.
 BMS STR ID: 26-2021-0120-0000 MPMS/ECMS PROJ: 116915 BRKEY: 16874

COMMONWEALTH OF PENNSYLVANIA
 DEPARTMENT OF TRANSPORTATION

FAYETTE COUNTY
S.R. 2021 SECTION 01M
 SEGMENT 0120 OFFSET 0000
 S.R 2021-01M STA. 286+70
 OVER COOLSPRING RUN
 SCOUR REPAIR
GENERAL PLAN AND SHEET INDEX

CLASSIFICATION OF EARTHWORK FOR STRUCTURES	RC-11M	06-01-10
BACKFILL AT STRUCTURES	RC-12M	11-01-22
DEWATERING DEVICES	RC-75M	06-01-10
TYPICAL WATERPROOFING & EXPANSION DETAILS	BC-788M	11-23-22

PREPARED BY:
 PENNSYLVANIA DEPARTMENT
 OF TRANSPORTATION
 ENGINEERING DISTRICT 12-0
 UNIONTOWN, PA. 15401

 SIGNATURE DATE

DESCRIPTION	DWG. NO.	APP. DATE
SUPPLEMENTAL DRAWINGS		

RECOMMENDED _____	SHEET <u>1</u> OF <u>3</u>
_____ DISTRICT BRIDGE ENGINEER	S - 42505