

# COMMERCIAL STREET BRIDGE REPLACEMENT

Replacement of the I-376 Commercial Street Bridge over Nine Mile Run, Frick Park,  
and Commercial Street  
City of Pittsburgh, Allegheny County



# MEETING PRESENTERS



John Myler  
PennDOT District 11  
Sr. Assistant Construction  
Manager



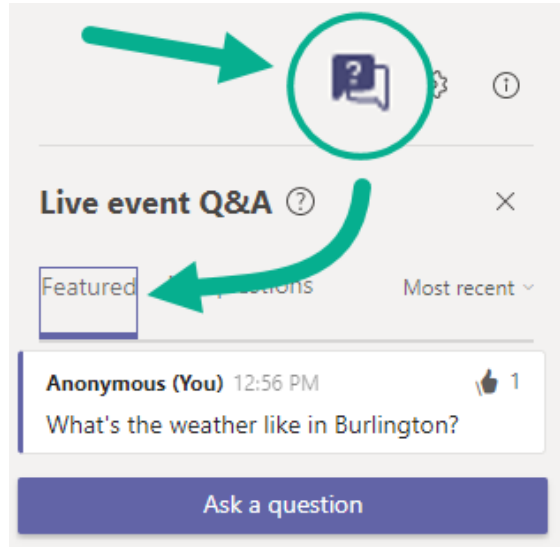
Nick Burdette, PE  
HDR  
Sr. Bridge Engineer



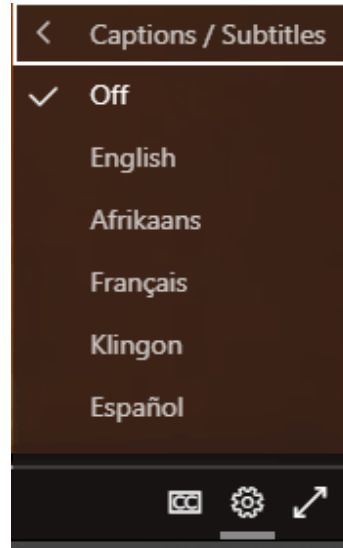
Michelle Olszewski  
Fay, S&B USA  
Construction  
Sr. Project Manager



# TEAMS LIVE NAVIGATION



Q&A Questions will be answered at the end of the presentation



Closed Captions



This meeting is being recorded



# PROJECT TEAM

## S.R. 376 Section A62

I-376 Commercial Street Bridge over Nine Mile Run, Frick Park,  
and Commercial Street

Project Designer:



Prime Contractor:



Construction Management  
and Inspection:



Project Funding:



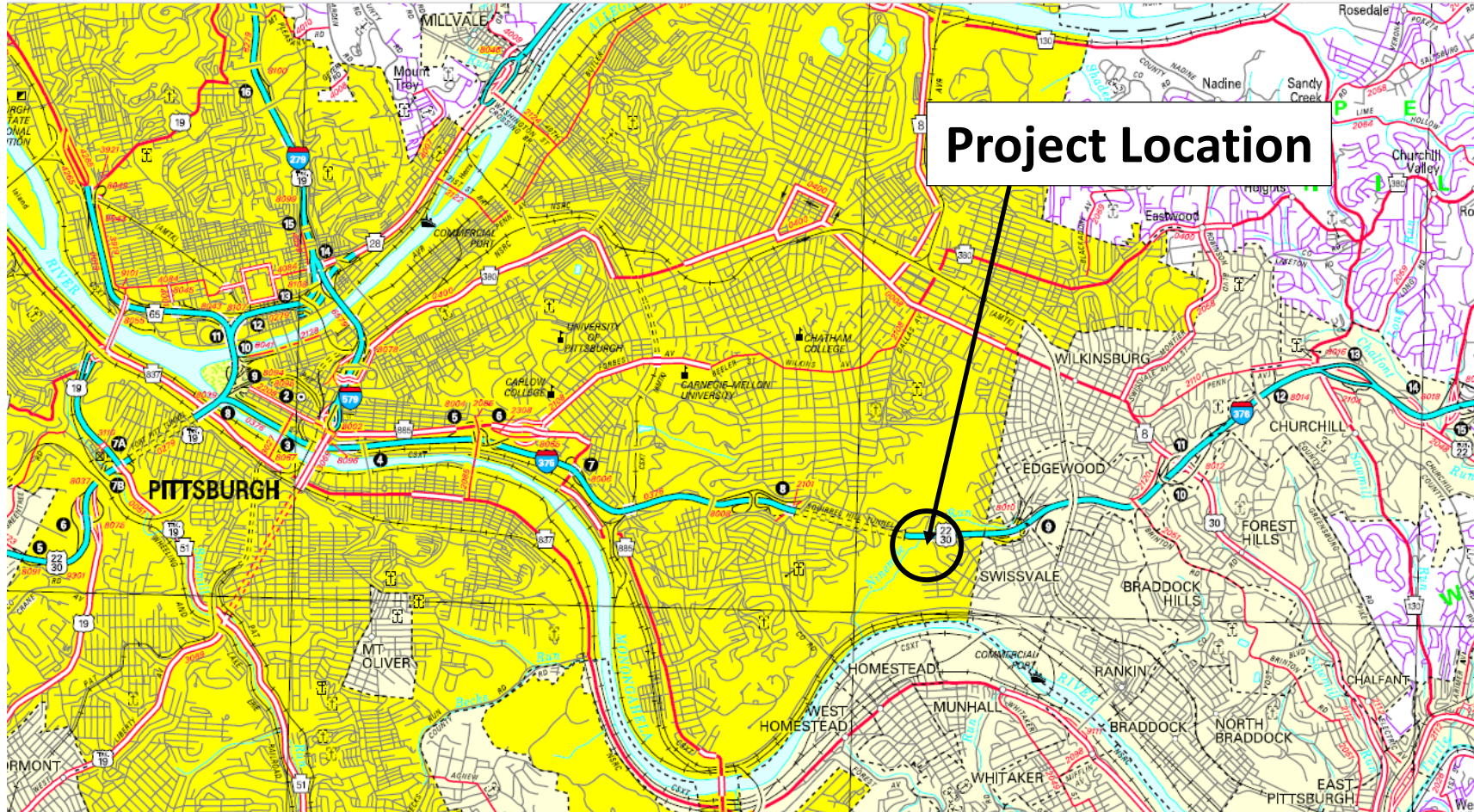


# MEETING AGENDA

1. Location
2. Project Overview
3. New Bridge Details
4. Project Impacts
5. Construction Schedule
6. Q&A

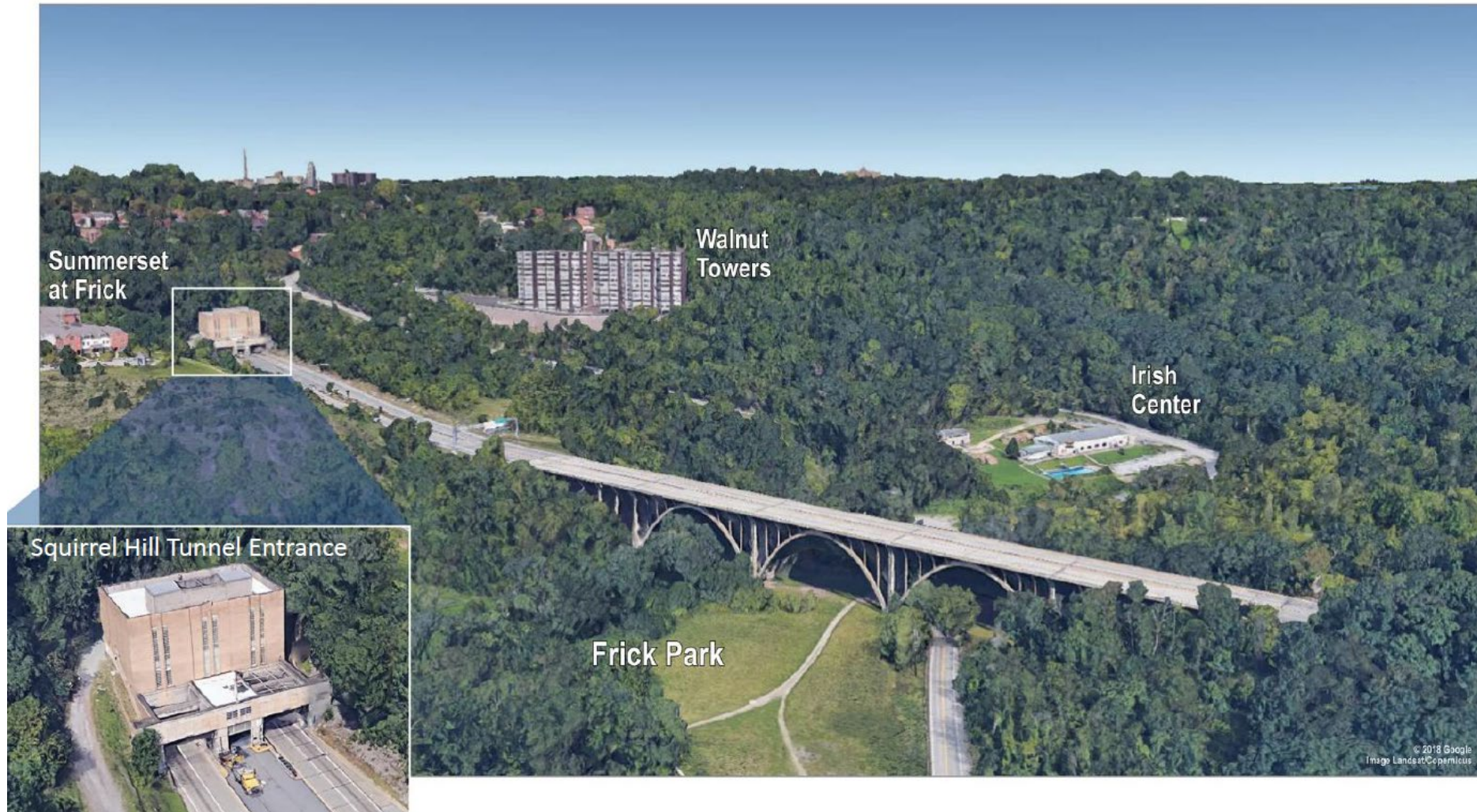


# REPLACEMENT OF I-376 COMMERCIAL STREET BRIDGE





# REPLACEMENT OF I-376 COMMERCIAL STREET BRIDGE





# EXISTING BRIDGE OVERVIEW

Completed in 1951, the Commercial Street Bridge is 73 years old.

The structure carries approximately 100,000 vehicles per day.

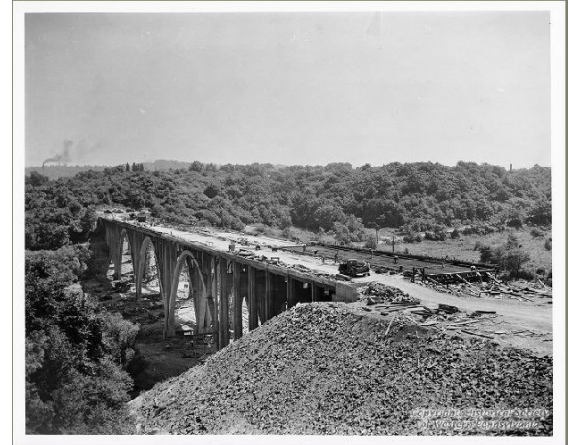
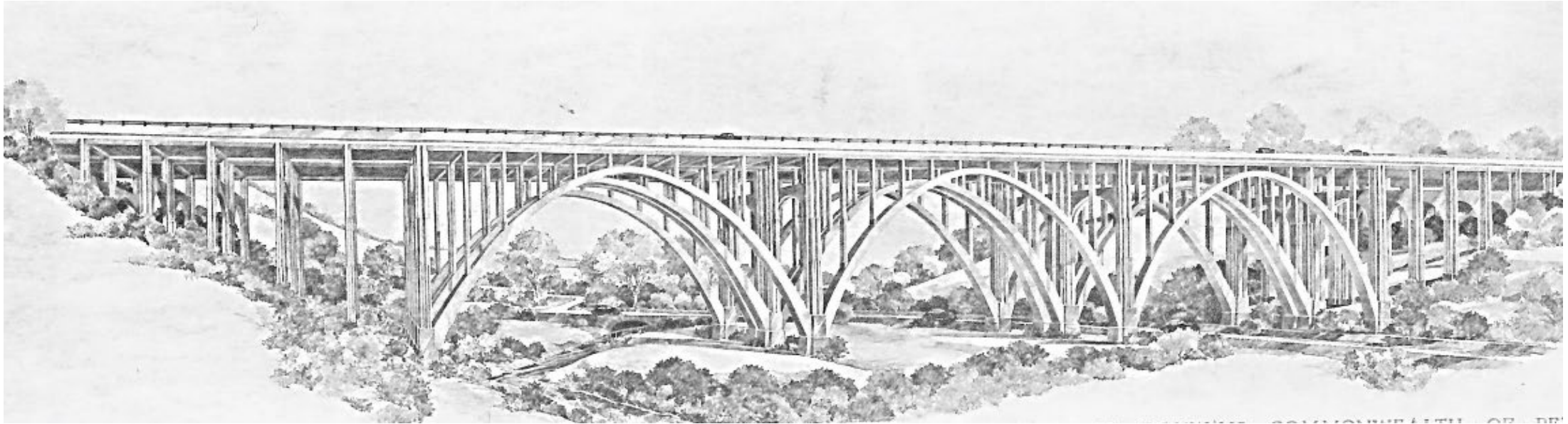
The bridge cannot carry Permit Loads on Interstate 376.

Accelerating deterioration/Recurring maintenance not cost-effective.





# HISTORIC SIGNIFICANCE OF EXISTING BRIDGE



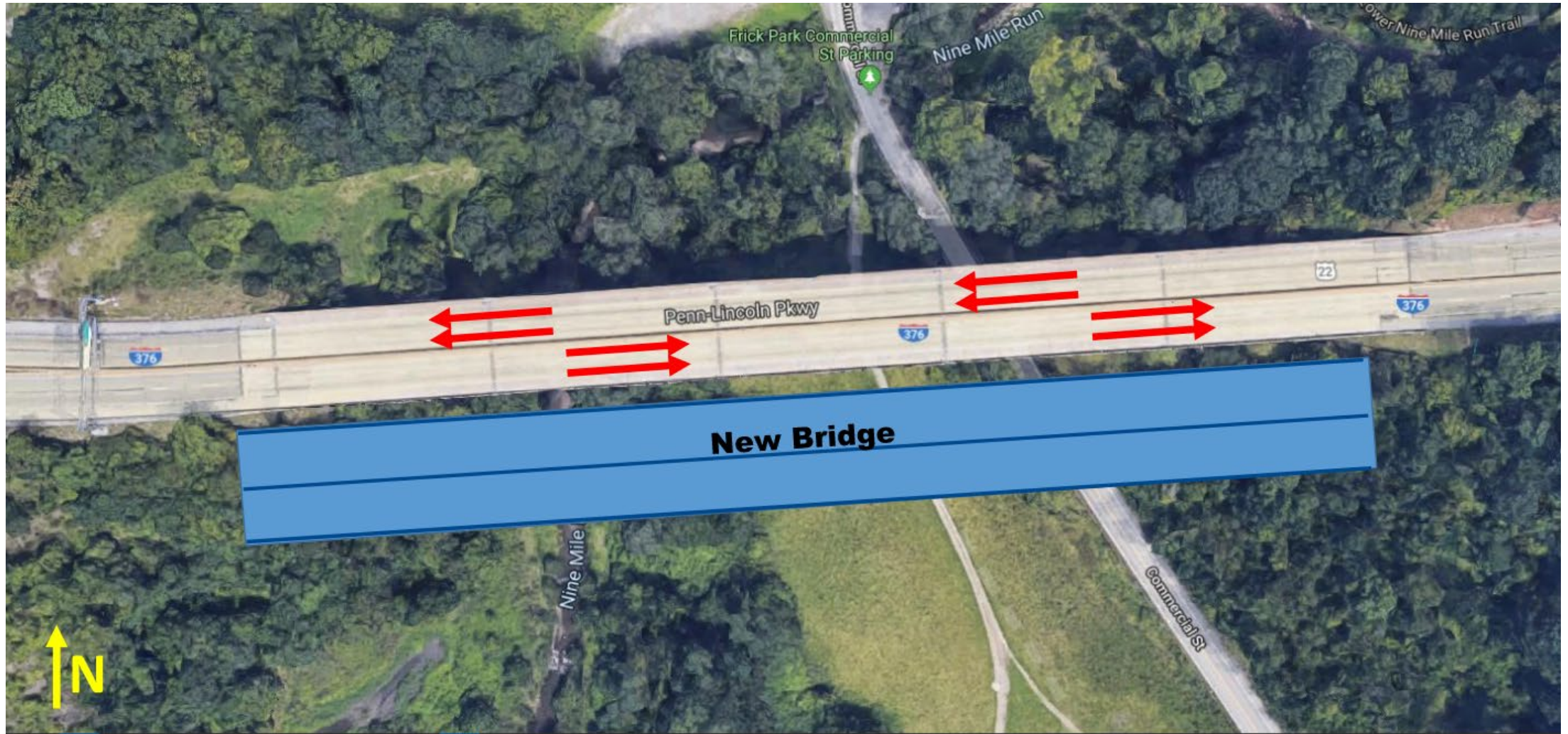


# REPLACEMENT CONSIDERATIONS & NEW BRIDGE



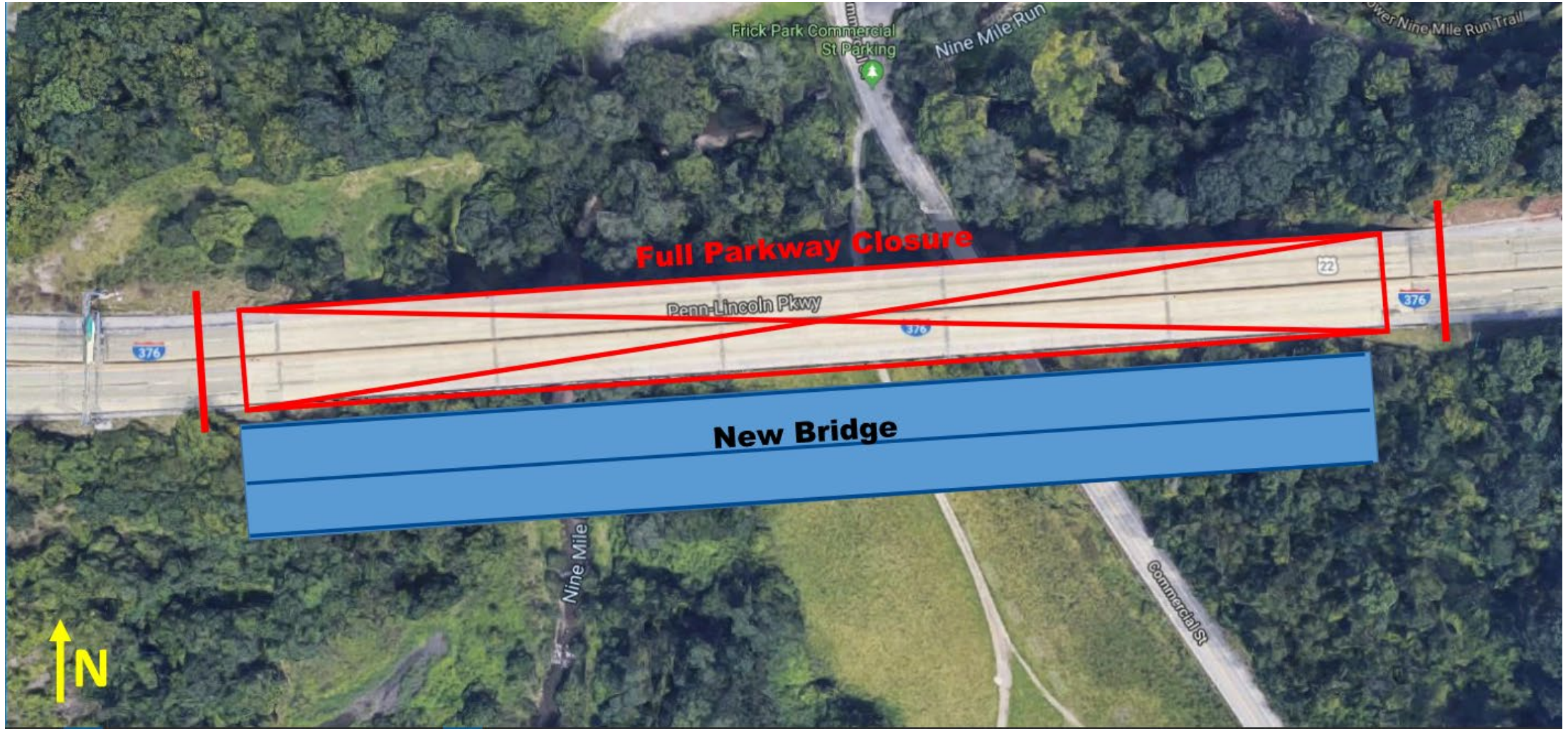


# SLIDE IN CONSTRUCTION



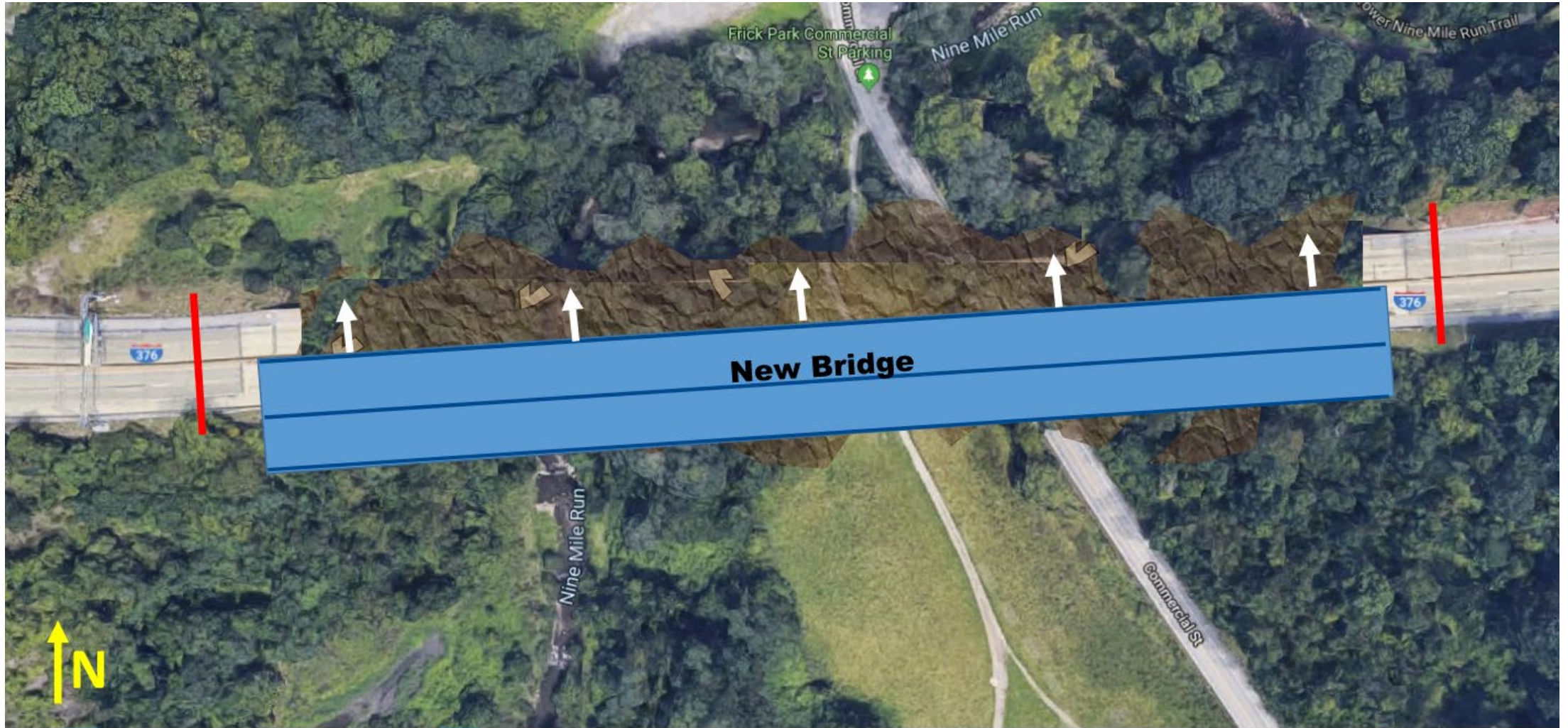


# SLIDE IN CONSTRUCTION



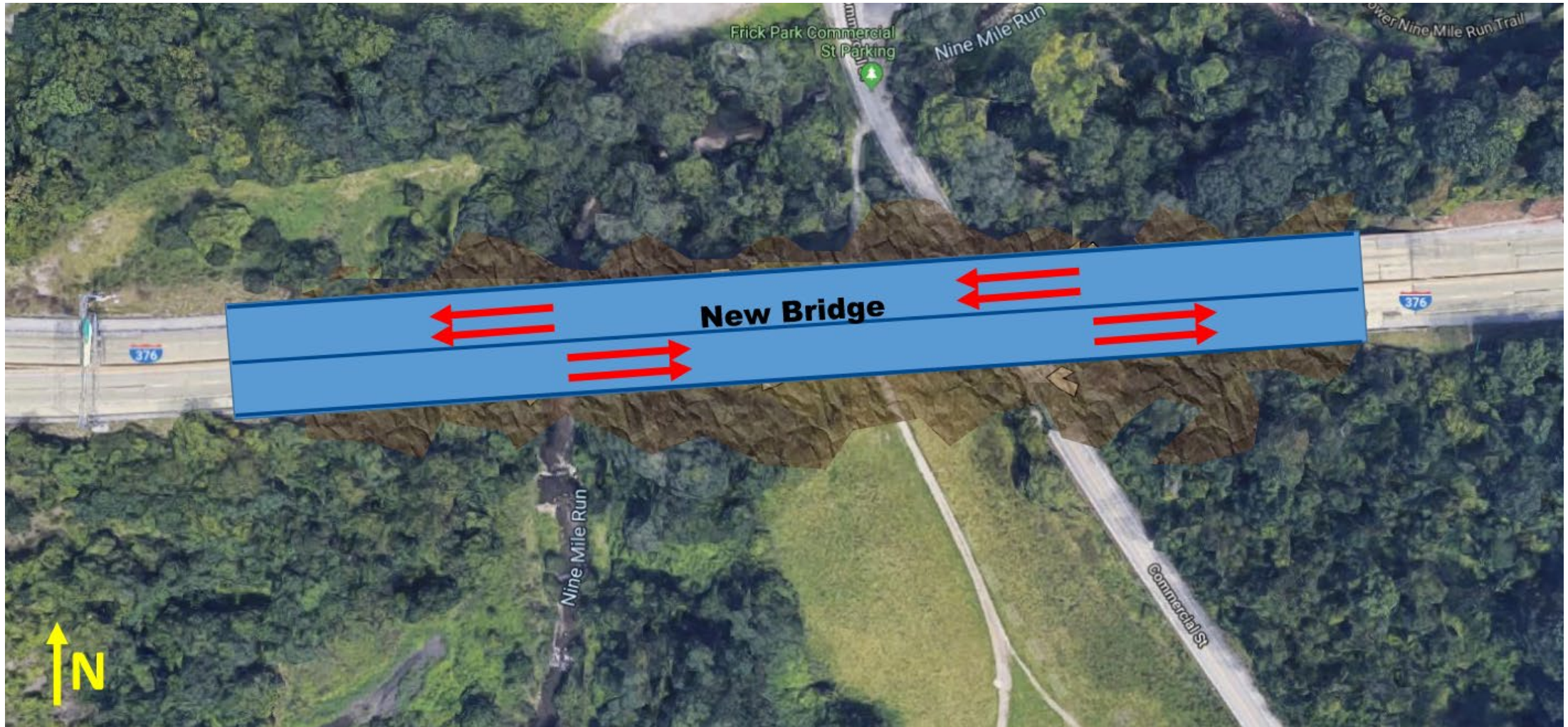


# SLIDE IN CONSTRUCTION



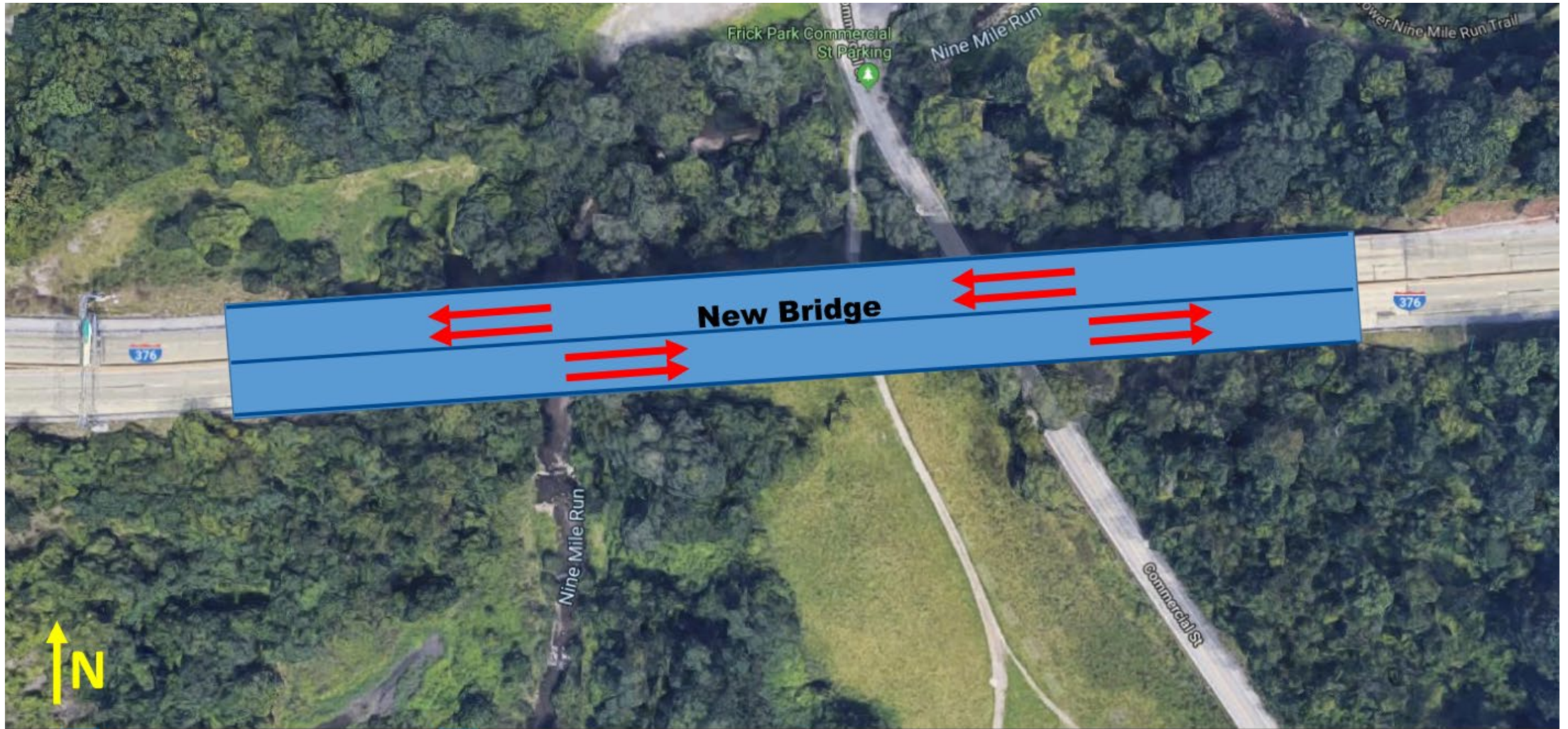


# SLIDE IN CONSTRUCTION



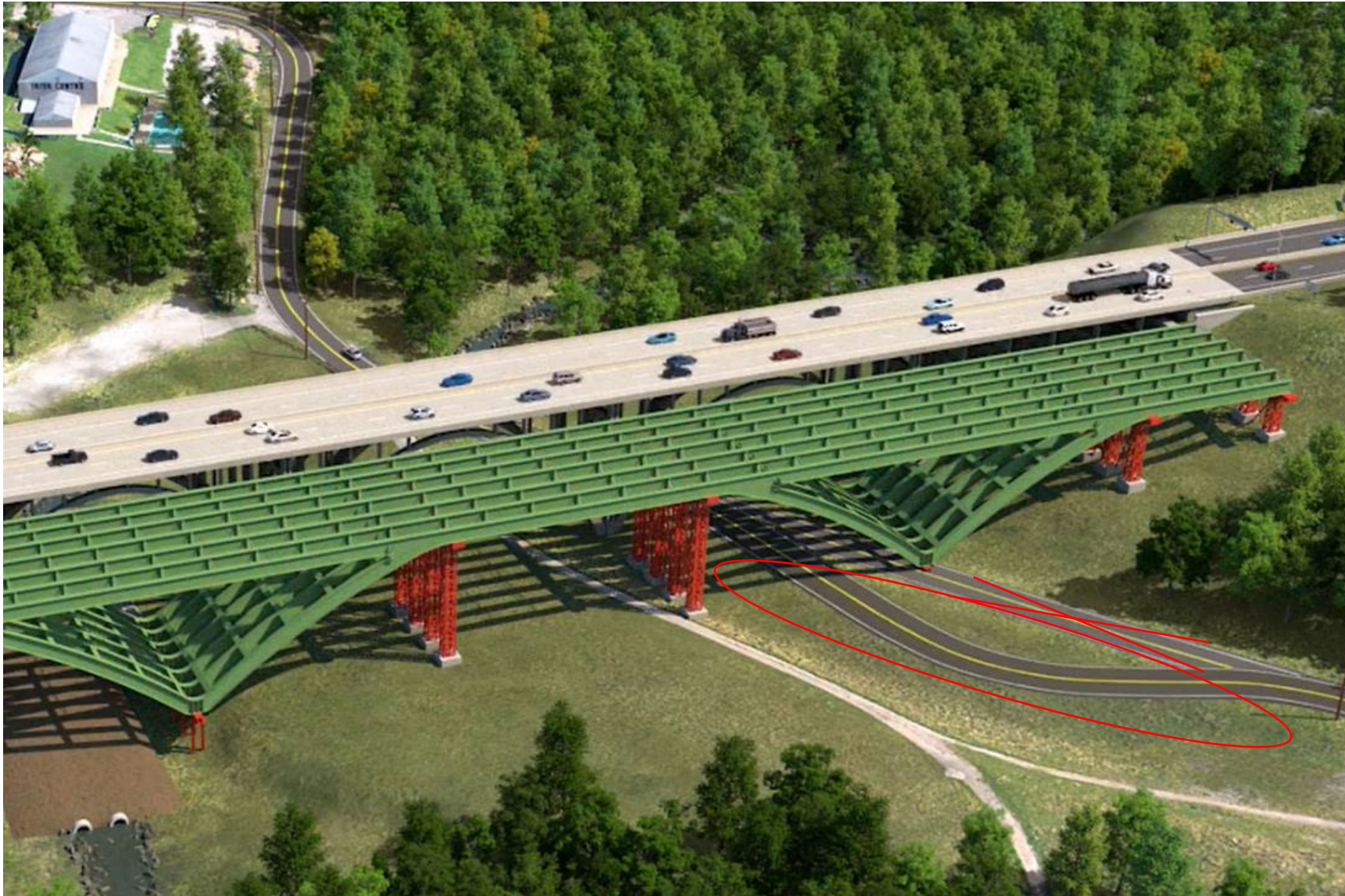


# SLIDE IN CONSTRUCTION





# IMPACTS UNDER THE BRIDGE





# I-376 APPROACH WORK



**CANTILEVER SIGN STRUCTURES TO BE REPLACED**





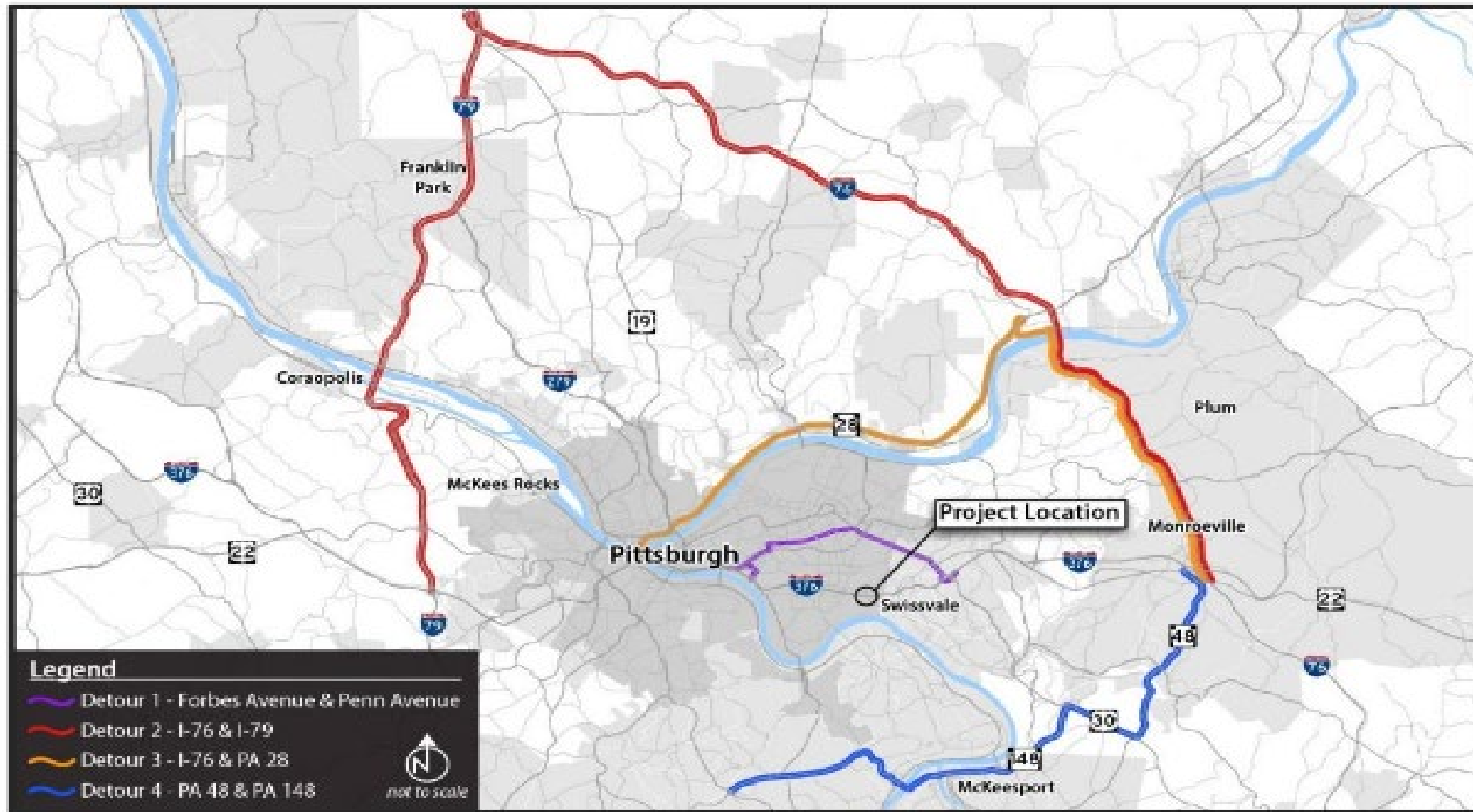








# DETOUR ROUTES



**FIGURE 2: DETOUR ROUTES**  
(Not to Scale)







# NEW BRIDGE





# NEW BRIDGE

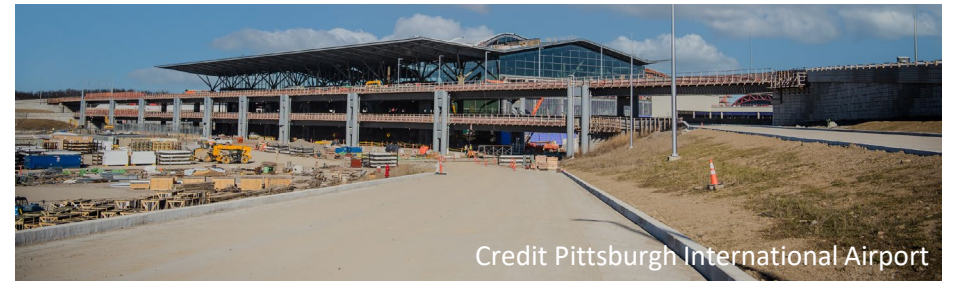
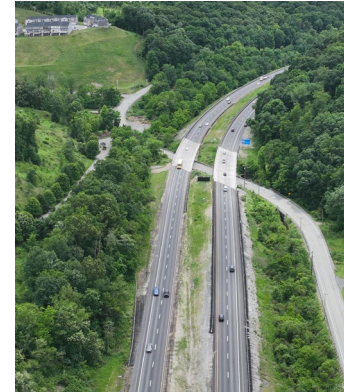






## FAY S&B USA CONSTRUCTION

- Founded in 1947 in Pittsburgh
- Operates in the Mid-Atlantic region
- Industry leader in design-build, value engineering and accelerated construction delivery methods
- Strong relationship with PennDOT for 25+ years
- Many projects partnering with HDR





# ANTICIPATED SCHEDULE

## 2024

- Ramp G Closure – Exit 78B EB
- Commercial Street & Nine Mile Trail Relocation
- Unofficial Mountain Bike Trail Closure





# ANTICIPATED SCHEDULE

## 2025

- Construction of Substructure of new Bridge
- One overnight full lane closure of I-376 WB for ITS work
- Weeknight Extended Single Lane Restrictions on I-376 EB for construction of retaining wall
- Median Reconstruction East of Tunnel
- Nine overnight full closures of I-376 EB for Bridge Steel Delivery





# ANTICIPATED SCHEDULE

## 2026

- Construction of New Superstructure
- Weekend long single lane closures for construction of shoulder widening I-376 EB
- Weekend long single lane closure of I-376 WB for shoulder reconstruction
- Weekend long closure of I-376 EB & WB for installation of sign structures and ITS
- FULL CLOSURE of I-376 EB & WB for bridge demolition and slide
- Reconstruct Commercial Street





# ANTICIPATED SCHEDULE

## 2027

- Establish Final Grading
- Re-establish stream
- Install post-construction stormwater management structures
- Plant trees and grass





# WANT PROJECT UPDATES?

To help keep motorists informed as work progresses, PennDOT has created an email distribution list for Parkway East traffic advisories and construction updates. Enroll by sending email addresses to [ymanyisha@pa.gov](mailto:ymanyisha@pa.gov). Please write “**Subscribe – Parkway East**” in the subject line.

Motorists can also find updates on the [Commercial Street Bridge](#) webpage, or follow PennDOT’s region [X](#) page @511PAPittsburgh and join the [Greater Pittsburgh Area PennDOT Facebook group](#).



[Link to Commercial St Bridge Project Website](#)

