

SOUTH DOCK STREET BRIDGE REPLACEMENT, MERCER COUNTY



PROJECT DESCRIPTION

- South Dock Street over Pine Run in the City of Sharon, Mercer County.
- The project will include replacing the existing bridge with a reinforced concrete box culvert.
- Replacement of curb/median and the replacement of sidewalk on the eastern side of the roadway to improve mobility for all modes of transportation.
- The roadway will keep **its** existing lane configuration.



PROJECT DESCRIPTION

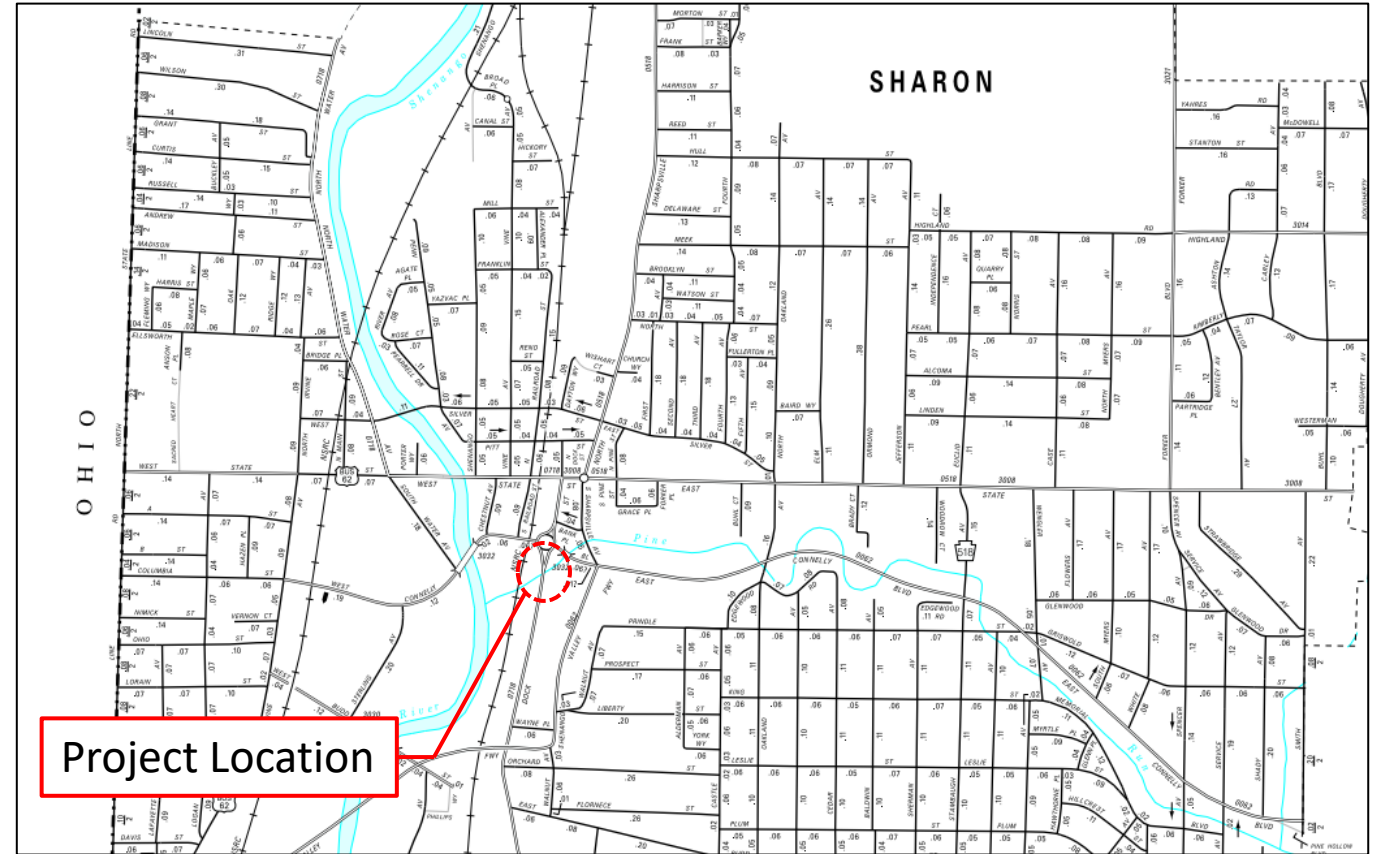


- The existing single span steel I-beam bridge was built in 1923 and reconstructed in 1990. It is classified as in poor condition.
- Approximately 7,000 vehicles a day use the bridge, on average.
- Work is expected to occur during the 2026 construction season.

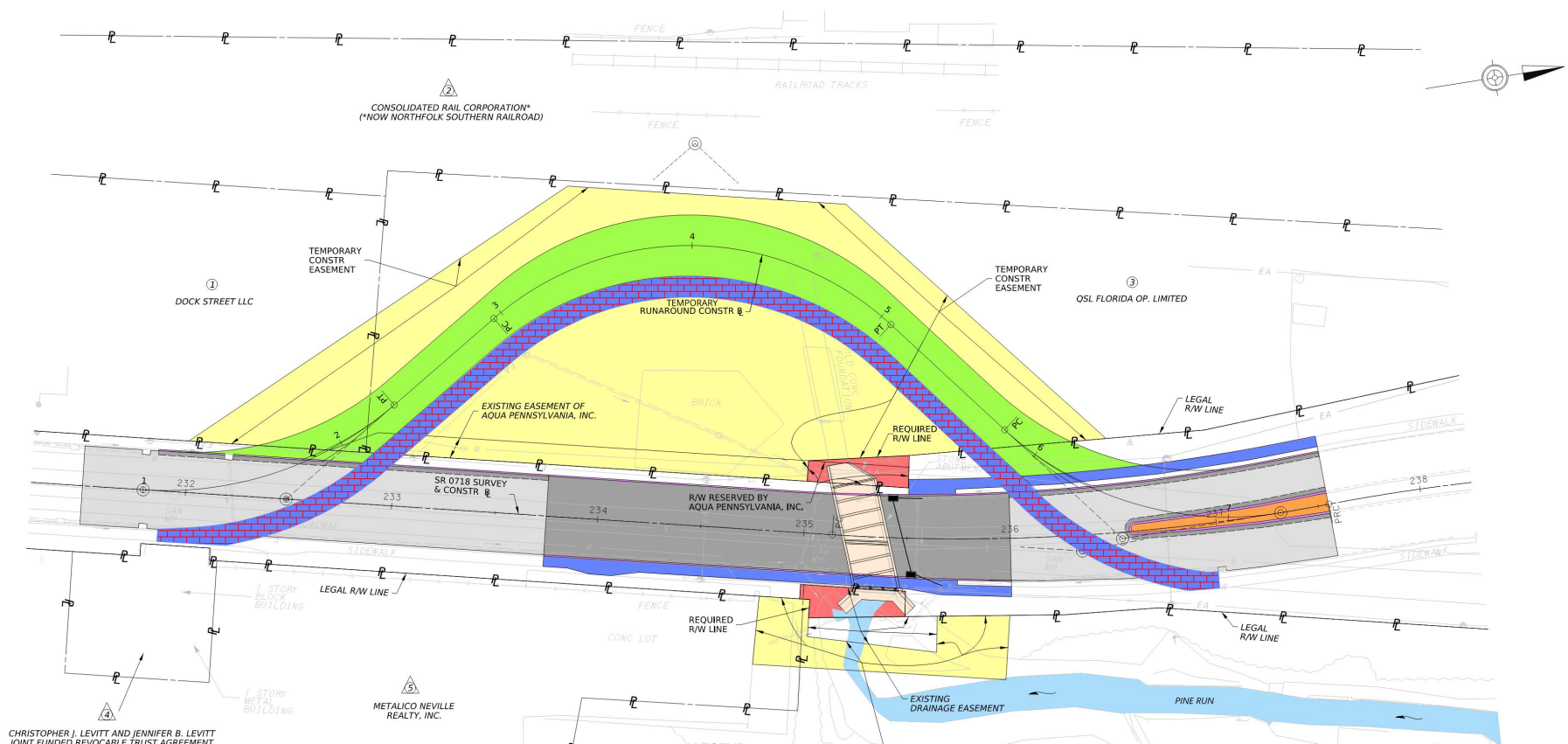


PROJECT DESCRIPTION

- The project is located on South Dock Street (Route 718) between the intersection with Wayne Place and the roundabout intersection with East Connelly Blvd near the Ohio and Pennsylvania border.
- The project site is indicated by the red circle on the map.



PROPOSED PLANS



SOUTH DOCK STREET (SR 0718) OVER PINE RUN BRIDGE REPLACEMENT PROJECT

- LEGEND**
- PEDESTRIAN DETOUR
 - PROPOSED CULVERT
 - PROPOSED MILL AND OVERLAY
 - PROPOSED FULL DEPTH PAVEMENT
 - PROPOSED CONCRETE CURB
 - PROPOSED CONCRETE ISLAND
 - PROPOSED CONCRETE SIDEWALK
 - PROPOSED TEMPORARY PAVEMENT
 - EXISTING STREAM
 - TEMPORARY CONSTRUCTION EASEMENT AREA
 - REQUIRED RIGHT-OF-WAY AREA

SCALE
HORIZONTAL 0 25 50

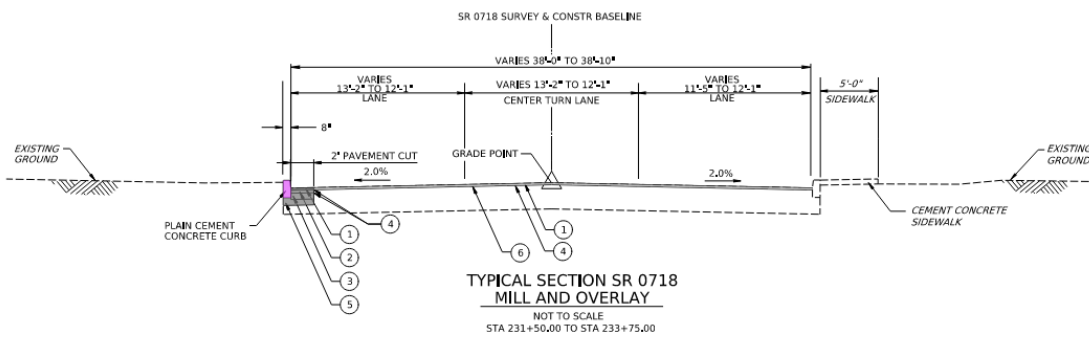
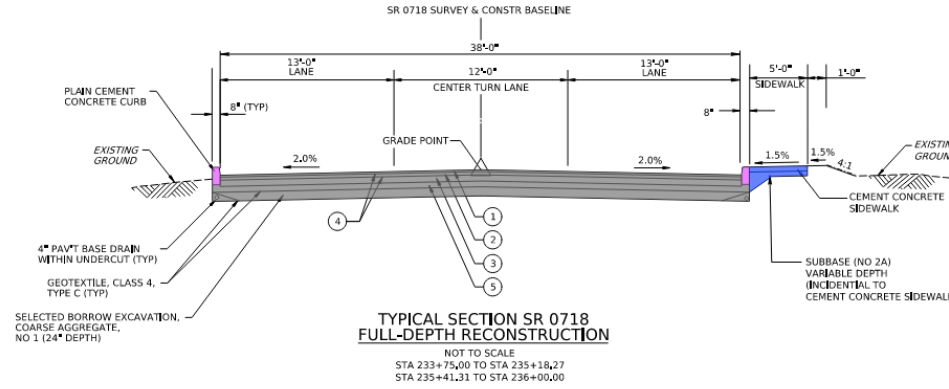
PREPARED FOR:
pennsylvania
DEPARTMENT OF TRANSPORTATION
ENGINEERING DISTRICT 1-0
255 ELM STREET
OIL CITY, PA 16301

PREPARED BY:
Colliers Engineering & Design
800 CRANBERRY WOODS DRIVE, SUITE 280
CRANBERRY TOWNSHIP, PA 16066

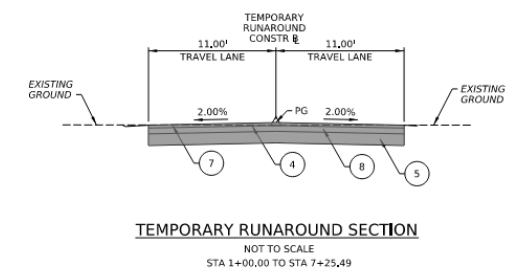
SR 0718 SECTION B06
PRESENTATION BOARD 1
PRELIMINARY PLAN VIEW
AUGUST 2024 SHEET 1 OF 3



PROPOSED PLANS



- MATERIALS**
- ① SUPERPAVE ASPHALT MIXTURE DESIGN, WEARING COURSE, PG 64S-22, 0.3 TO < 3 MILLION ESALS, 9.5 MM MIX, 1 1/2\"
 - ② SUPERPAVE ASPHALT MIXTURE DESIGN, BINDER COURSE, PG 64S-22, 0.3 TO < 3 MILLION ESALS, 19.0 MM MIX, 2 1/2\"
 - ③ SUPERPAVE ASPHALT MIXTURE DESIGN, BASE COURSE, PG 64S-22, 0.3 TO < 3 MILLION ESALS, 25.0 MM MIX, 6\"
 - ④ BITUMINOUS TACK COAT
 - ⑤ SUBBASE 6\"
 - ⑥ MILLING OF BITUMINOUS PAVEMENT SURFACE, 1 1/2\"
 - ⑦ SUPERPAVE ASPHALT MIXTURE DESIGN, WEARING COURSE, PG 64S-22, < 0.3 MILLION ESALS, 9.5 MM MIX, 1 1/2\"
 - ⑧ SUPERPAVE ASPHALT MIXTURE DESIGN, BASE COURSE, PG 64S-22, < 0.3 MILLION ESALS, 25.0 MM MIX, 3\"
 - SEEDING AND SOIL SUPPLEMENTS FORMULA B, D OR L

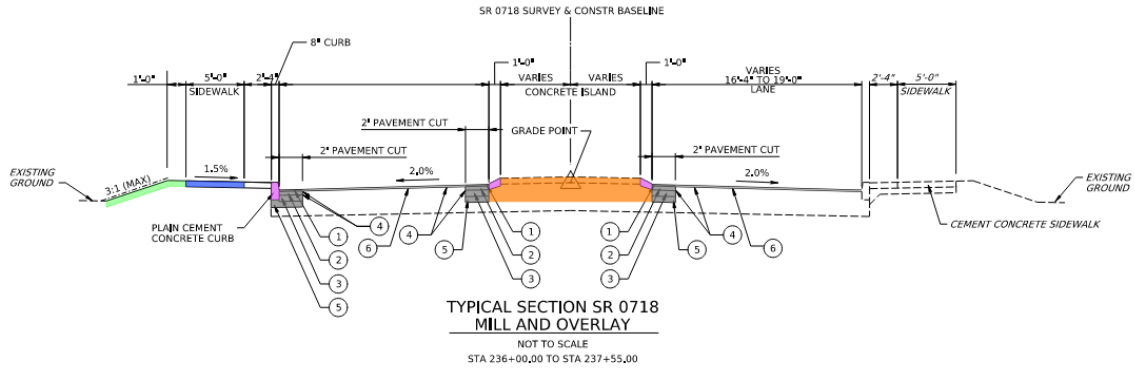


**SR 0718 (SOUTH DOCK STREET) OVER PINE RUN
BRIDGE REPLACEMENT PROJECT**

<p>PREPARED FOR: pennsylvania DEPARTMENT OF TRANSPORTATION ENGINEERING DISTRICT 1-0 255 ELM STREET OIL CITY, PA 16301</p>	<p>PREPARED BY: Colliers Engineering & Design 800 CRANBERRY WOODS DRIVE, SUITE 280 CRANBERRY TOWNSHIP, PA 16066</p>	<p>SR 0718 SECTION B06 PRESENTATION BOARD 2 TYPICAL SECTIONS AUGUST 2024 SHEET 2 OF 3</p>
--	--	--

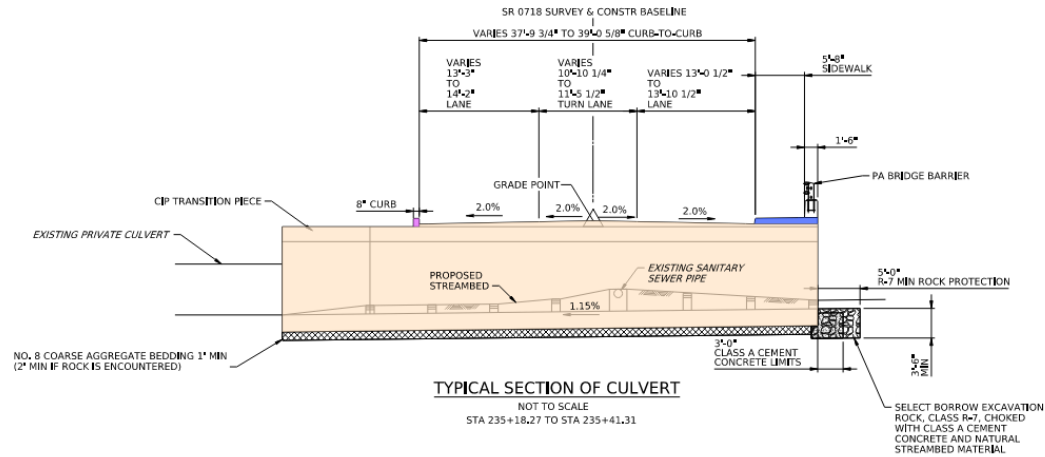


PROPOSED PLANS



MATERIALS

- ① SUPERPAVE ASPHALT MIXTURE DESIGN, WEARING COURSE, PG 645-22, 0.3 TO < 3 MILLION ESALS, 9.5 MM MIX, 1 1/2" DEPTH, SRL+H
 - ② SUPERPAVE ASPHALT MIXTURE DESIGN, BINDER COURSE, PG 645-22, 0.3 TO < 3 MILLION ESALS, 19.0 MM MIX, 2 1/2" DEPTH
 - ③ SUPERPAVE ASPHALT MIXTURE DESIGN, BASE COURSE, PG 645-22, 0.3 TO < 3 MILLION ESALS, 25.0 MM MIX, 6" DEPTH
 - ④ BITUMINOUS TACK COAT
 - ⑤ SUBBASE 6" DEPTH (NO 2A)
 - ⑥ MILLING OF BITUMINOUS PAVEMENT SURFACE, 1 1/2" DEPTH, MILLED MATERIAL RETAINED BY DEPARTMENT (DELIVERED TO STOCKPILE)
- SEEDING AND SOIL SUPPLEMENTS
FORMULA B, D OR L



<p>PREPARED FOR:</p> <p>ENGINEERING DISTRICT 1-0 255 ELM STREET OIL CITY, PA 16301</p>	<p>PREPARED BY:</p> <p>800 CRANBERRY WOODS DRIVE, SUITE 280 CRANBERRY TOWNSHIP, PA 16066</p>	<p>SR 0718 SECTION B06</p> <p>PRESENTATION BOARD 3</p> <p>TYPICAL SECTIONS</p> <p>AUGUST 2024</p> <p>SHEET 3 OF 3</p>
--	--	--



TRAFFIC IMPACTS

- The project will be constructed using a temporary runaround, so the roadway can remain open through the majority of the work.
- The runaround will be constructed first and will require removal of a portion of the existing curb and center median.
- The proposed runaround will extend through the existing industrial parking lot on the western side of the project.
- Pedestrian traffic will be maintained through the runaround limits.



PROJECT INPUT / FEEDBACK

Comments can be submitted online through South Dock Street Bridge Replacement website, located at PennDOT's website: www.penndot.pa.gov/District1 or by contacting:

Project Manager: Kyle Barker

Email: kybarker@pa.gov

Mailing: PA Department of
Transportation
Engineering District 1
255 Elm Street
Oil City, PA 16301

Phone: 814-678-7166

