

Bayfront Parkway Central Corridor Improvement Project Newsletter

Creating a Stronger Connection between Downtown Erie and the Waterfront



September 2024 Vol. 5 No. 3

Updates Coming to Intersection at Cranberry Street and the Parkway

A project to improve the safety and efficiency for pedestrians and vehicles at the intersection of Cranberry Street and the Bayfront Parkway (Route 4034) in the City of Erie is got underway earlier this month.

The [Cranberry Street Safety Improvement Project](#) includes the installation of a new traffic signal and pedestrian upgrades at the intersection. The traffic signal will be managed through an omnidirectional detection system that will trigger the light to change only when vehicles are stopped on Cranberry Street.

Once the signal installation is complete, the light will be turned on flashing mode for 30-days before going into service.

The new system will also include countdown pedestrian signal heads, a protected left turn arrow with a flashing yellow phase for westbound traffic on the Bayfront Parkway waiting to turn onto Cranberry Street, and emergency vehicle preemption capabilities.

The project also includes new ADA curb ramps, pedestrian signals and lighting-and piano key style painted crosswalks.

(Continued on page 2)



Listen and Learn

The Cranberry Street intersection project was the topic of our most recent episode of ["Let's Talk Bayfront"](#).

PennDOT construction team member Doug Fry and Edward Orzechowski from the Traffic Unit discussed the planned improvements and how the signal will manage vehicles and pedestrians.

Justin Baker, PennDOT construction manager of the Bayfront Parkway Improvement Project, also provided update on work in the Central Corridor.

The September 17 program and past episodes are available on [Bayfront Parkway Project website](#) and the [PennDOT YouTube channel](#).

Drivers Should be Alert for Restrictions, Delays

(Continued from page 1)

There will also be sidewalk replacements and asphalt paving on Cranberry Street, and new pavement markings. Sidewalk will be constructed on the north side of Cranberry Street to fill in a missing link within the existing path.

Work started on September 16, 2024, weather permitting, and will be completed in June 2025.

During the project, the Bayfront Multimodal Trail will be closed to all bikes and pedestrians for a 24-hour

period for the installation of a new ADA curb ramp at the northeast corner of the intersection.

Some work on the roadway, such as painting and mast arm installation, may require temporary lane closures and traffic controlled by flaggers. Drivers should anticipate traffic delays when lane restrictions are in place.

The contractor is M&B Services of Clarion, PA. The contract cost is \$571,142. This project is funded at least in part by the Bipartisan Infrastructure Law (BIL).

Stay Up-to-Date on Bayfront Construction News

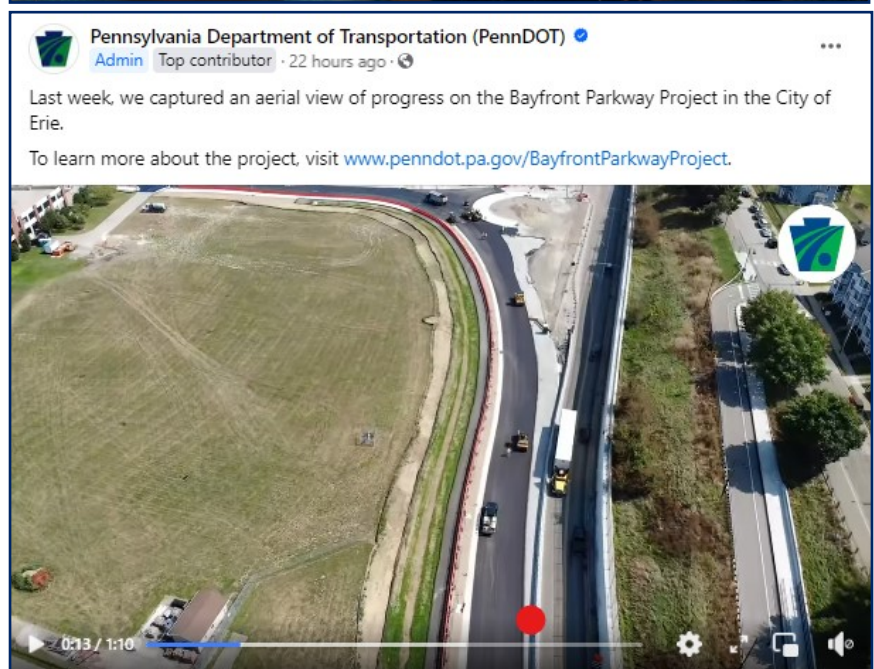
As work continues of so many aspects and areas of the Bayfront Parkway, PennDOT is working hard to keep the public informed through a variety of means.

Along with providing information to our media partners in Erie County, PennDOT posts press releases on the departments website in the area designated for northwest Pennsylvania — [penndot.gov/pa/District1](https://www.penndot.gov/pa/District1). Links to those releases are also posted on in the [News](#) area within the Bayfront Parkway Project page — [penndot.gov/pa/BayfrontParkwayProject](https://www.penndot.gov/pa/BayfrontParkwayProject).

For social media users, updates are also posted on PennDOT's [Bayfront Parkway Project Facebook group](#) (@BayfrontParkwayProject) and on through the [Northwest Region X](#) account (@511PAerie).

Videos and episodes of the “Let’s Talk Bayfront” online chat series can be found on the departments officials YouTube channel.

The public can also emails questions and comments about any of the Bayfront Parkway related construction projects to BayfrontProject@pa.gov.



The Purpose of the project is to improve the pedestrian, bicycle, transit, and passenger vehicle connection of the Erie Central Business District and adjacent neighborhoods to the waterfront property north of the Bayfront Parkway, reduce crashes as much as practical on the Bayfront Parkway, improve future congestion to an acceptable level of service or delay, and improve traffic operations and efficiency.