

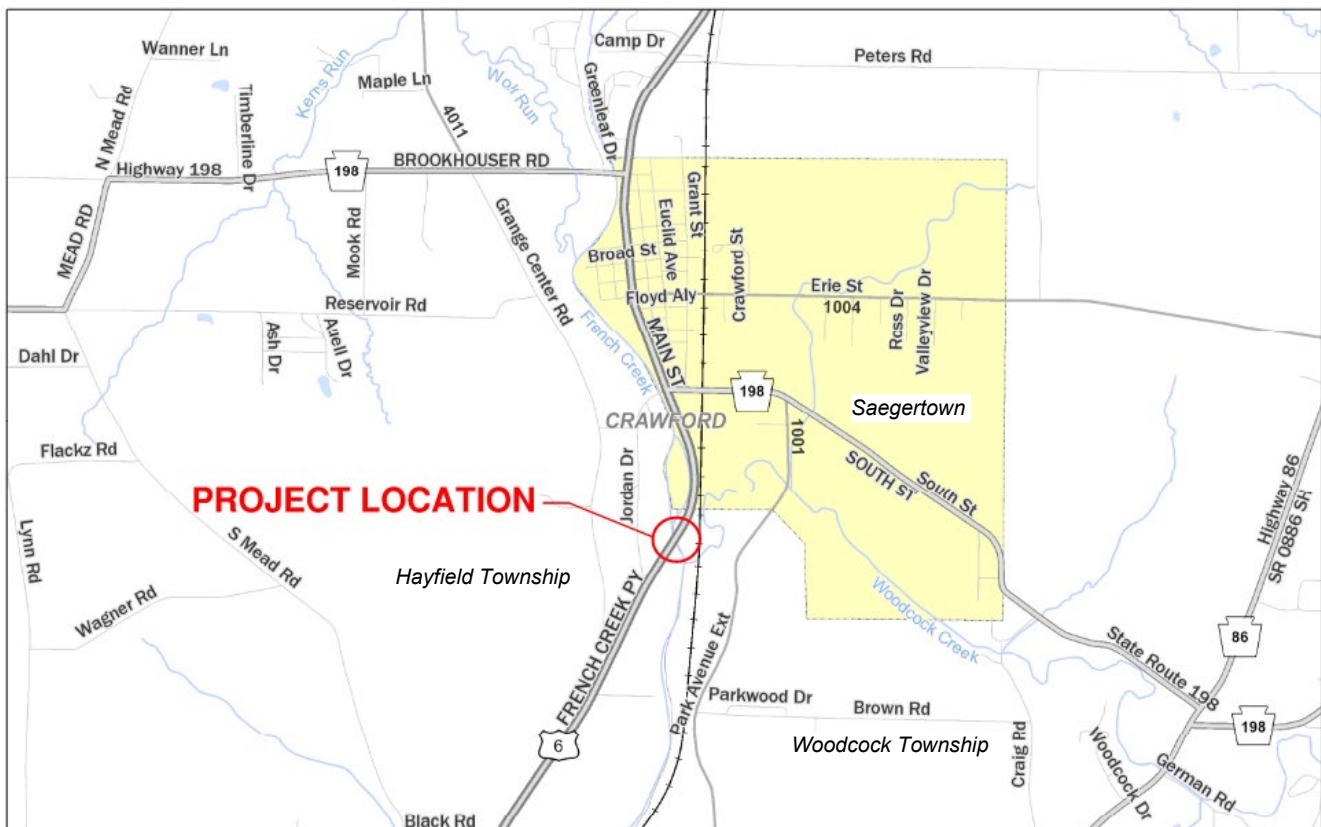
ROUTE 6 BRIDGE REPLACEMENT, NEAR SAEGERTOWN, CRAWFORD COUNTY

PROJECT DESCRIPTION

The existing bridge carrying U.S. Route 6 (French Creek Parkway) over French Creek is a two-span through truss structure. It was originally built in 1936 and is presently in poor condition. Continued deterioration will eventually reduce the capacity of the structure to safely carry legal loads. This project will replace the existing structure with a new bridge to maintain a safe and functional Route 6 crossing for local and regional traffic. The existing bridge presently carries about 7,200 vehicles per day.

A Pennsylvania Fish and Boat Commission (PFBC) boat access area is adjacent to the bridge, and French Creek is a designated water trail. These recreational resources are protected under Section 4(f) of the United States Department of Transportation Act of 1966.

PROJECT AREA



The bridge is located on U.S. Route 6 (French Creek Parkway), just south of Saegertown Borough. Hayfield Township lies on the west side of French Creek and Woodcock Township on the east.

View Route 6 Bridge Replacement plans and complete the online comment form at
www.penndot.pa.gov/District1.

PROPOSED PLAN

The project will replace the bridge at the existing location with a new two-span steel plate girder structure. The roadway across the bridge will have 11-ft. travel lanes and 5-ft. shoulders. The project also includes reconstructing the approach roadway pavement, upgrading guide rail and pavement markings, and placing rock to stabilize roadside slopes.

The project avoids any temporary or permanent impact to the Section 4(f) resources in the project area. There are no permanent impacts to the PFBC boat access area, and access to the property will be maintained throughout construction. An Aids-to-Navigation (ATON) Plan will be implemented to maintain use of the French Creek water trail during construction. The ATON Plan will provide a safe navigation channel during most periods of construction. When certain overhead demolition and construction activities will not permit safe use of the navigation channel, a safe portage route around the construction area will be designated.

ANTICIPATED CONSTRUCTION SCHEDULE

The project is planned for construction between Spring and Fall of the 2025 construction season.

TRAFFIC IMPACTS

A detour will be needed so that U.S. Route 6 can be closed at the project site during construction. The detour will be posted using Route 198 and Interstate 79 and is expected to be in place for approximately 6 months from April through September. The proposed posted detour route is shown on the following page.

CONSTRUCTION FUNDING

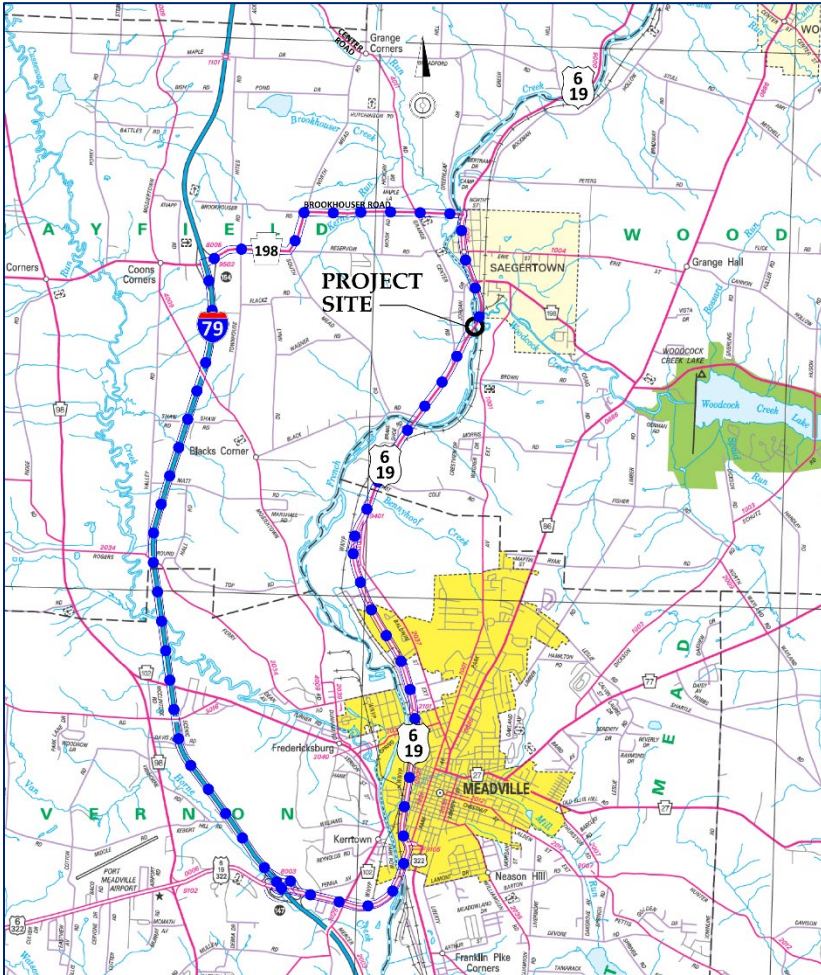
The estimated construction cost for the project is \$5,990,000 and funding will be with 80% federal and 20% state funds.

CURRENT PUBLIC COMMENT PERIOD

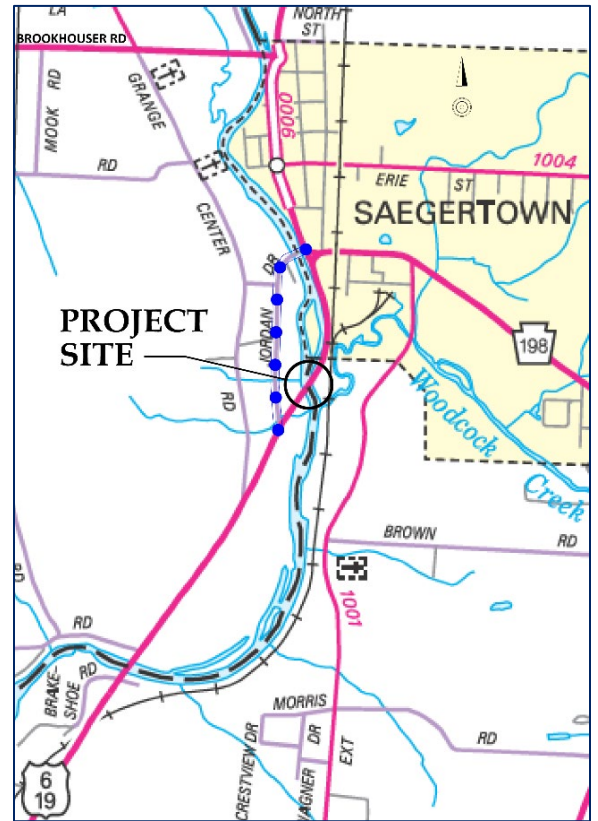
The purpose of the public comment period is to introduce the project and receive input regarding any questions or concerns with the project. It is also an opportunity for the public to review and comment on the project's potential effect upon Cultural Resources pursuant to the Advisory Council on Historic Preservation's 36 CFR Part 800 regulations implementing Section 106 of the National Historic Preservation Act as well as gathering input from the public regarding impacts to Section 4(f) resources as noted. The project documents can be made available in alternative languages or formats if requested.

The current comment period will remain open through January 18, 2024. Comments and questions can be submitted to PennDOT Project Manager Stephen A. Schettler at sschettler@pa.gov, 814-678-7356, or 255 Elm Street, Oil City, PA 16301. An online comment form for the Route 6 Bridge Replacement Project is also available at www.penndot.pa.gov/District1.

DETOUR MAPS



Traffic Detour Route



Bicycle Detour Route

View Route 6 Bridge Replacement plans and complete the online comment form at www.penndot.pa.gov/District1.