

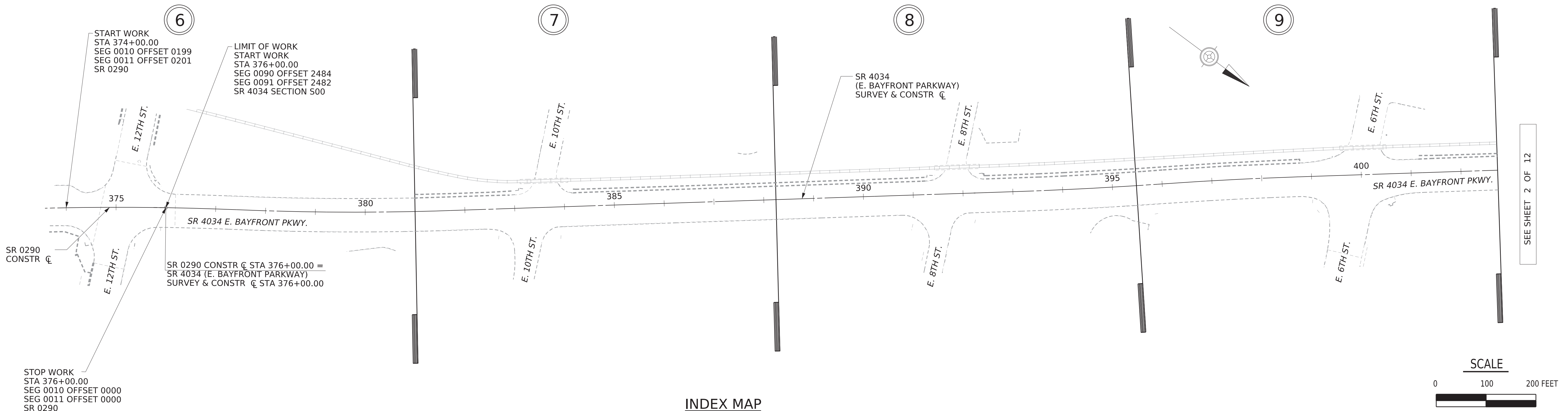
GENERAL NOTES

- THIS WORK CONSISTS OF LOCATING AND PROPERLY MARKING THE ROADWAY AND SHOULDERS FOR THE APPLICATION OF PAVEMENT MARKINGS AND THE INSTALLATION OF DELINEATORS WITHIN THE LIMITS OF CONSTRUCTION.
- PROVIDE MATERIALS AND CONSTRUCT THIS PROJECT IN ACCORDANCE WITH:
 - THE MANUAL ON UNIFORM TRAFFIC CONTROL DEVICES (MUTCD), 2009 EDITION AND ALL SUPPLEMENTS.
 - PENNDOT PUBLICATION 46, TRAFFIC ENGINEERING MANUAL, DATED MARCH 2014.
 - PENNDOT PUBLICATION 111, TRAFFIC CONTROL PAVEMENT MARKINGS AND SIGNING STANDARDS, DATED JUNE 2013.
 - PENNDOT PUBLICATION 213, TEMPORARY TRAFFIC CONTROL GUIDELINES, DATED APRIL 2022.
 - PENNDOT PUBLICATION 236, HANDBOOK OF APPROVED SIGNS, DATED NOVEMBER 2013.
 - PENNDOT PUBLICATION 408, SPECIFICATIONS, AND ALL SUPPLEMENTS.
- PRIOR TO APPLICATION, THE CONTRACTOR SHALL FIELD CHECK AND LOCATE ALL PAVEMENT MARKINGS TO THE SATISFACTION OF THE ENGINEER.
- THE CONTRACTOR IS RESPONSIBLE TO REPLACE ALL EXISTING PAVEMENT MARKINGS (SHOWN TO REMAIN) AND PROPOSED PAVEMENT MARKINGS THAT WERE DAMAGED OR REMOVED DURING CONSTRUCTION.
- ALL PAVEMENT MARKINGS AT LIMIT OF PAVING SHALL MEET EXISTING PAVEMENT MARKINGS, WHERE APPLICABLE.
- ALL CONTRACTOR SUPPLIED MATERIALS MUST BE DEPARTMENT APPROVED AND USED ONLY UNDER THE CONDITIONS FOR WHICH THE MATERIALS WERE APPROVED AS PER BULLETIN 15 (PUBLICATION 35).
- DETAILS OTHER THAN THOSE INDICATED ARE ON THE FOLLOWING STANDARD DRAWINGS:
 - TC-8600 JUNE 13, 2013
 - TC-8602 JUNE 13, 2013
 - TC-8604 AUGUST 17, 2021
- SEE CONSTRUCTION PLAN FOR PROPERTY OWNERS, RIGHT-OF-WAY DETAILS, AND OTHER CONSTRUCTION DATA.

INDEX OF DRAWINGS

DESCRIPTION	SHEET
GENERAL NOTES AND INDEX MAP	1 - 2
TABULATION OF QUANTITIES	3 - 5
PLAN	6 - 12

DISTRICT	COUNTY	ROUTE	SECTION	SHEET
1-0	ERIE	4034	500	1 OF 12
CITY OF ERIE				
REV NO	REVISIONS	DATE	BY	APPD

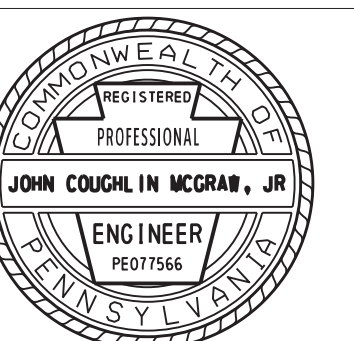


INDEX MAP

LEGEND



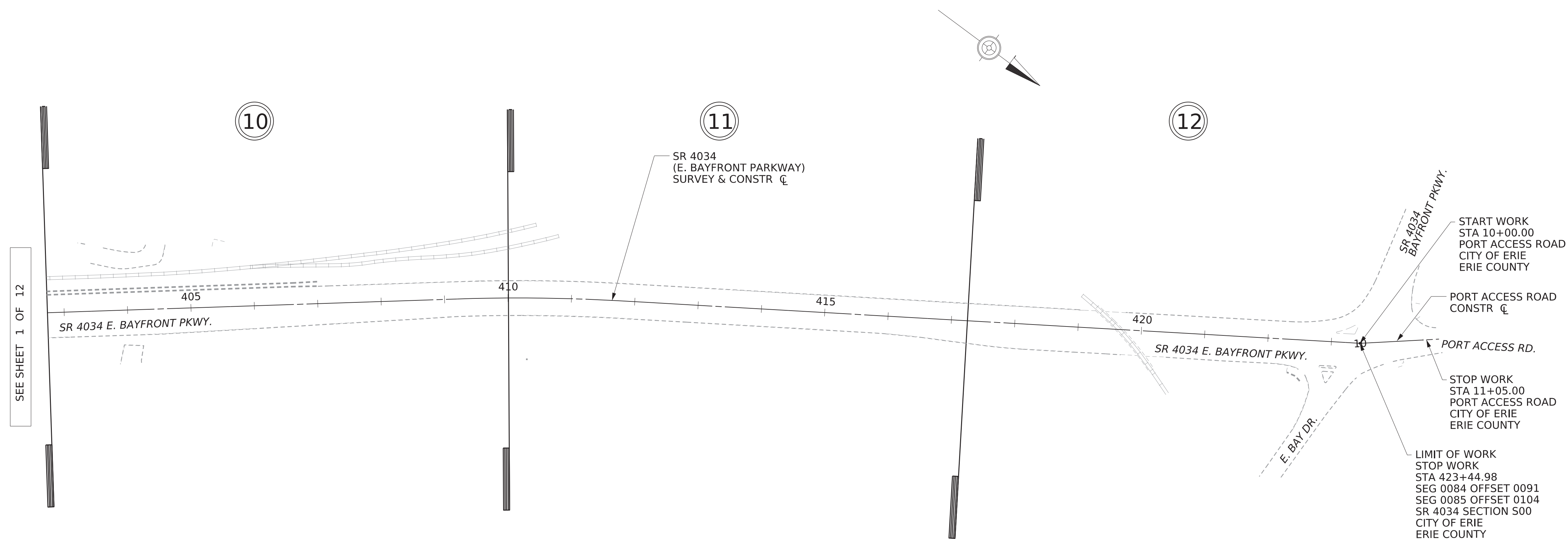
PAVEMENT MARKING PLAN



J. McGraw
 07-14-2023

SEE SHEET 2 OF 12

DISTRICT	COUNTY	ROUTE	SECTION	SHEET
1-0	ERIE	4034	500	2 OF 12
CITY OF ERIE				
REV NO	REVISIONS	DATE	BY	APPD



SEE SHEET 1 OF 12

LEGEND

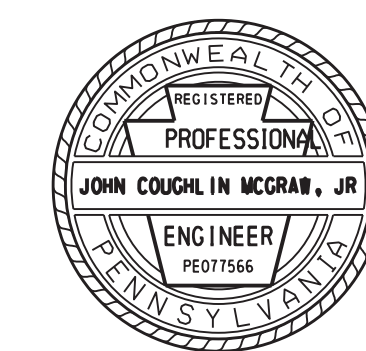
-  PLAN
-  SHEET LIMITS

INDEX MAP

SCALE



PAVEMENT MARKING PLAN

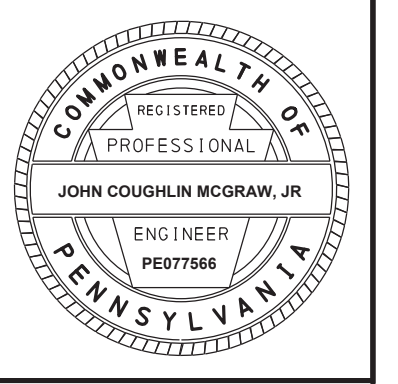


TABULATION OF QUANTITIES PAVEMENT MARKING PLAN

REVISION NO	REVISIONS	DATE	BY	DISTRICT	COUNTY	ROUTE	SECTION	SHEET
				01	ERIE	4034	S00	3 OF 12
CITY OF ERIE								

0937 0301 EACH	0964 0001 LF	0964 0002 LF	4964 0005 LF	0964 0008 LF	0964 0021 LF	0964 0224 EACH	0964 0226 EACH	0966 0017 EACH	REMARKS	SIDE	STATIONS
									SR 4034 / SR 0290		
58								218	ENTIRE PROJECT	LT / RT	0+00.00
					57				WE/24"	LT / RT	374+34.00 to 374+45.00
				208	190				WE/8", WE/24"	LT / RT	374+44.00 to 374+76.00
				153	149				WE/8", WE/24"	RT	374+50.00 to 375+29.00
				166	162				WE/8", WE/24"	LT	374+79.00 to 375+65.00
					34				WE/24"	RT	374+85.00 to 375+19.00
					34				WE/24"	LT	374+96.00 to 375+29.00
		18							YE/4"	RT	375+60.00 to 375+69.00
				181	102				WE/8", WE/24"	LT / RT	375+70.00 to 375+75.00
	706	720							WE/4", YE/4"	RT	375+75.00 to 382+94.00
	707	720							WE/4", YE/4"	LT	375+75.00 to 382+95.00
					46				WE/24"	LT / RT	375+83.00 to 375+85.00
			100						RWE/6"	LT	375+85.00 to 376+85.00
			150						RWE/6"	LT	375+85.00 to 377+35.00
			136						RBWE/6"	RT	375+97.00 to 381+28.00
					1				LEFT ARROW	RT	376+09.00
					1				LEFT ARROW	RT	376+77.00
			139						RBWE/6"	LT	377+35.00 to 382+92.00
			150						RWE/6"	RT	381+28.00 to 382+78.00
			38						RWE/6"	RT	382+40.00 to 382+78.00
					1				LEFT ARROW	RT	382+48.00
					32				WE/24"	RT	382+78.00 to 382+80.00
				167	113				WE/8", WE/24"	LT / RT	382+84.00 to 383+06.00
				114	110				WE/8", WE/24"	RT	382+96.00 to 383+54.00
		8							YE/4"	RT	383+00.00 to 383+08.00
		7							YE/4"	LT	383+01.00 to 383+08.00
					26				WE/24"	RT	383+22.00 to 383+48.00

0937 0301 EACH	0964 0001 LF	0964 0002 LF	4964 0005 LF	0964 0008 LF	0964 0021 LF	0964 0224 EACH	0964 0226 EACH	0966 0017 EACH	REMARKS	SIDE	STATIONS
					84	84			WE/8", WE/24"	LT	383+46.00 to 383+89.00
						26			WE/24"	LT	383+59.00 to 383+84.00
					160	102			WE/8", WE/24"	LT / RT	383+71.00 to 384+08.00
			4						YE/4"	RT	383+80.00 to 383+84.00
			7						YE/4"	RT	383+80.00 to 383+86.00
	704	730							WE/4", YE/4"	RT	383+90.00 to 391+20.00
					731				YE/4"	LT / RT	383+93.00 to 391+21.00
						138			RBWE/6"	RT	384+00.00 to 389+53.00
						32			WE/24"	LT / RT	384+15.00 to 384+17.00
					74				RWE/6"	LT	384+17.00 to 384+91.00
					150				RWE/6"	LT	384+17.00 to 385+67.00
	698								WE/4"	LT	384+17.00 to 391+15.00
						1			LEFT ARROW	RT	384+42.00
						1			LEFT ARROW	RT	384+84.00
					137				RBWE/6"	LT	385+67.00 to 391+15.00
					150				RWE/6"	RT	389+53.00 to 391+02.00
					37				RWE/6"	RT	390+66.00 to 391+02.00
						1			LEFT ARROW	RT	390+73.00
						32			WE/24"	RT	391+03.00 to 391+05.00
					166	146			WE/8", WE/24"	LT / RT	391+08.00 to 391+36.00
					93	88			WE/8", WE/24"	RT	391+25.00 to 391+75.00
				7					YE/4"	RT	391+28.00 to 391+35.00
				6					YE/4"	LT	391+30.00 to 391+35.00
						22			WE/24"	RT	391+47.00 to 391+69.00
					72	72			WE/8", WE/24"	LT	391+72.00 to 392+10.00
						23			WE/24"	LT	391+84.00 to 392+07.00
					145	125			WE/8", WE/24"	LT / RT	392+05.00 to 392+35.00
						4			YE/4"	RT	392+09.00 to 392+13.00

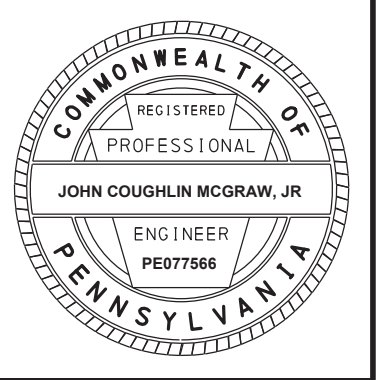


TABULATION OF QUANTITIES PAVEMENT MARKING PLAN

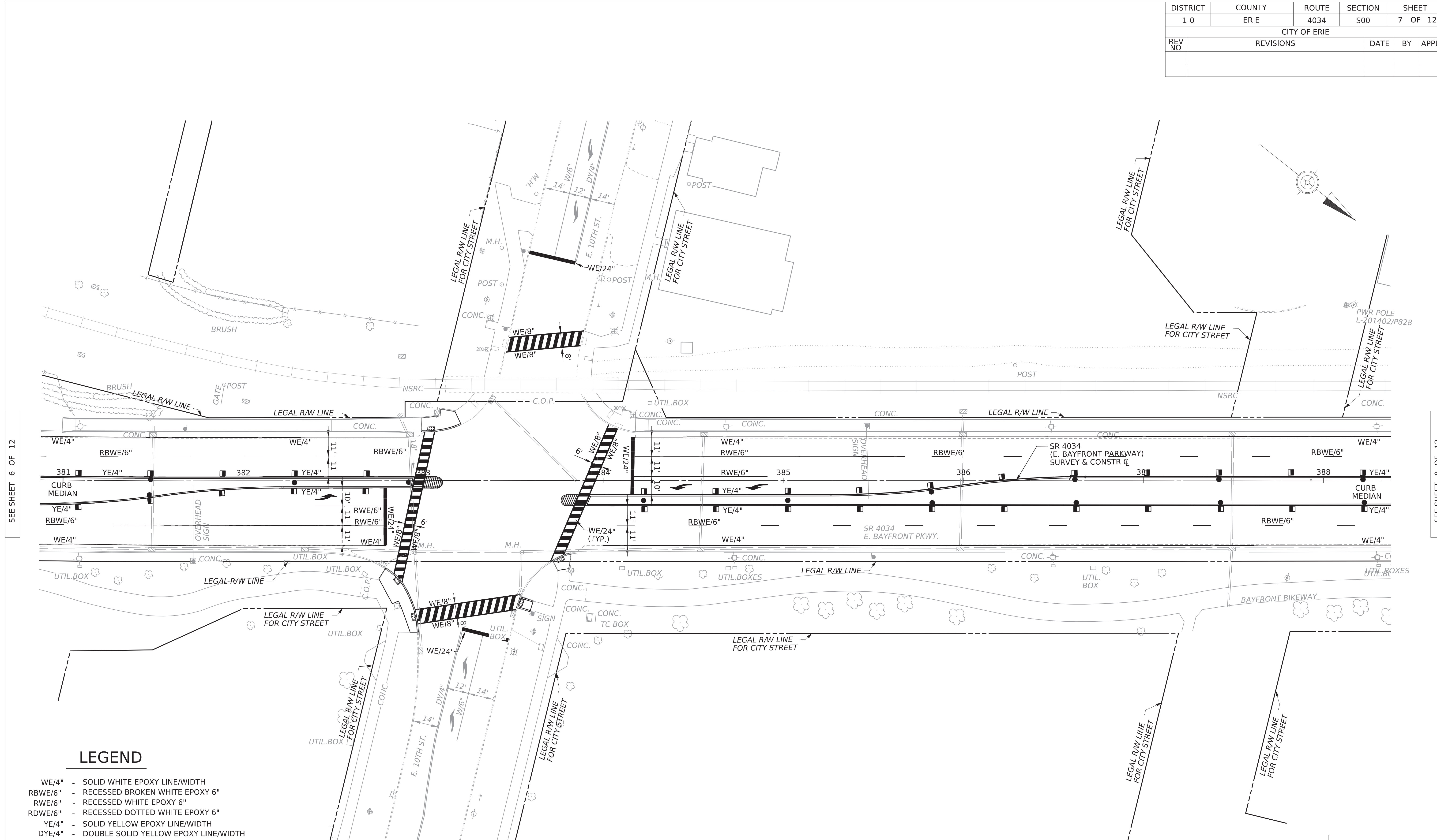
REVISION NO	REVISIONS	DATE	BY	DISTRICT	COUNTY	ROUTE	SECTION	SHEET
				01	ERIE	4034	S00	4 OF 12
CITY OF ERIE								

0937 0301 EACH	0964 0001 LF	0964 0002 LF	4964 0005 LF	0964 0008 LF	0964 0021 LF	0964 0224 EACH	0964 0226 EACH	0966 0017 EACH	REMARKS	SIDE	STATIONS
		6							YE/4"	RT	392+09.00 to 392+15.00
676		709							WE/4", YE/4"	RT	392+22.00 to 399+30.00
676		710							WE/4", YE/4"	LT	392+24.00 to 399+33.00
			131						RBWE/6"	RT	392+30.00 to 397+55.00
					32				WE/24"	LT / RT	392+43.00 to 392+45.00
			35						RWE/6"	LT	392+45.00 to 392+80.00
			150						RWE/6"	LT	392+45.00 to 393+95.00
							1		LEFT ARROW	RT	392+72.00
			131						RBWE/6"	LT	393+95.00 to 399+20.00
			150						RWE/6"	RT	397+55.00 to 399+05.00
							1		LEFT ARROW	RT	398+36.00
			51						RWE/6"	RT	398+54.00 to 399+05.00
							1		LEFT ARROW	RT	398+79.00
					32				WE/24"	RT	399+05.00 to 399+07.00
			194	175					WE/8", WE/24"	LT / RT	399+13.00 to 399+58.00
			161	152					WE/8", WE/24"	RT	399+33.00 to 400+15.00
		7							YE/4"	RT	399+39.00 to 399+46.00
									YE/4"	RT	399+39.00 to 399+46.00
		4							YE/4"	LT	399+42.00 to 399+46.00
					44				WE/24"	RT	399+64.00 to 400+06.00
				121	123				WE/8", WE/24"	LT	399+83.00 to 400+45.00
					36				WE/24"	LT	399+95.00 to 400+30.00
				158	139				WE/8", WE/24"	LT / RT	400+48.00 to 400+75.00
		5							YE/4"	RT	400+51.00 to 400+56.00
		7							YE/4"	RT	400+51.00 to 400+58.00
		844							YE/4"	RT	400+65.00 to 409+08.00
		843							YE/4"	LT / RT	400+66.00 to 409+08.00
					32				WE/24"	LT / RT	400+81.00 to 400+83.00

0937 0301 EACH	0964 0001 LF	0964 0002 LF	4964 0005 LF	0964 0008 LF	0964 0021 LF	0964 0224 EACH	0964 0226 EACH	0966 0017 EACH	REMARKS	SIDE	STATIONS
									WE/4"	LT	400+82.00 to 422+37.00
	2158								RWE/6"	LT	400+83.00 to 402+33.00
			150						RWE/6"	LT	400+83.00 to 403+24.00
			241						RBWE/6"	RT	400+87.00 to 421+41.00
			514						WE/4"	RT	400+87.00 to 422+61.00
	2175								LEFT ARROW	RT	401+08.00
							1		LEFT ARROW	RT	402+14.00
									RBWE/6"	LT	402+33.00 to 421+54.00
							1		LEFT ARROW	RT	403+16.00
									DYE/4"	LT	409+08.00 to 422+93.00
									DYE/4"	RT	409+08.00 to 423+12.00
									RBWE/6"	RT	416+31.00 to 421+41.00
									RR CROSSING	RT	417+51.00 to 418+10.00
									RBWE/6"	LT	420+03.00 to 421+54.00
									RR CROSSING	LT	421+10.00 to 421+69.00
									RWE/6"		421+41.00 to 422+92.00
									RWE/6"	RT	421+41.00 to 422+92.00
									RWE/6"	RT	421+41.00 to 422+92.00
									LEFT ARROW, THRU AND RIGHT ARROW	RT	421+44.00
									RWE/6"	LT	421+54.00 to 423+41.00
									LEFT ARROW, THRU AND RIGHT ARROW	RT	422+01.00
									WE/24"	RT	422+12.00 to 422+76.00
									WE/8", WE/24"	RT	422+53.00 to 422+87.00
									LEFT ARROW, THRU AND RIGHT ARROW	RT	422+60.00
	94								WE/4"	RT	422+69.00 to 422+76.00
	113								WE/4"	RT	422+77.00 to 423+16.00
									WE/24"	RT	422+92.00 to 422+94.00
									RDWE/6"	RT	422+94.00 to 423+45.00



DISTRICT	COUNTY	ROUTE	SECTION	SHEET
1-0	ERIE	4034	500	7 OF 12
CITY OF ERIE				
REV NO	REVISIONS	DATE	BY	APPD



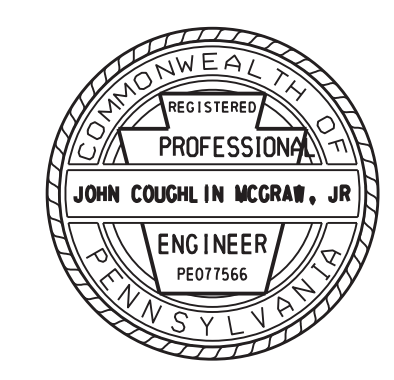
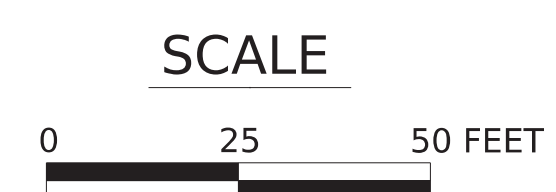
SEE SHEET 6 OF 12

SEE SHEET 8 OF 12

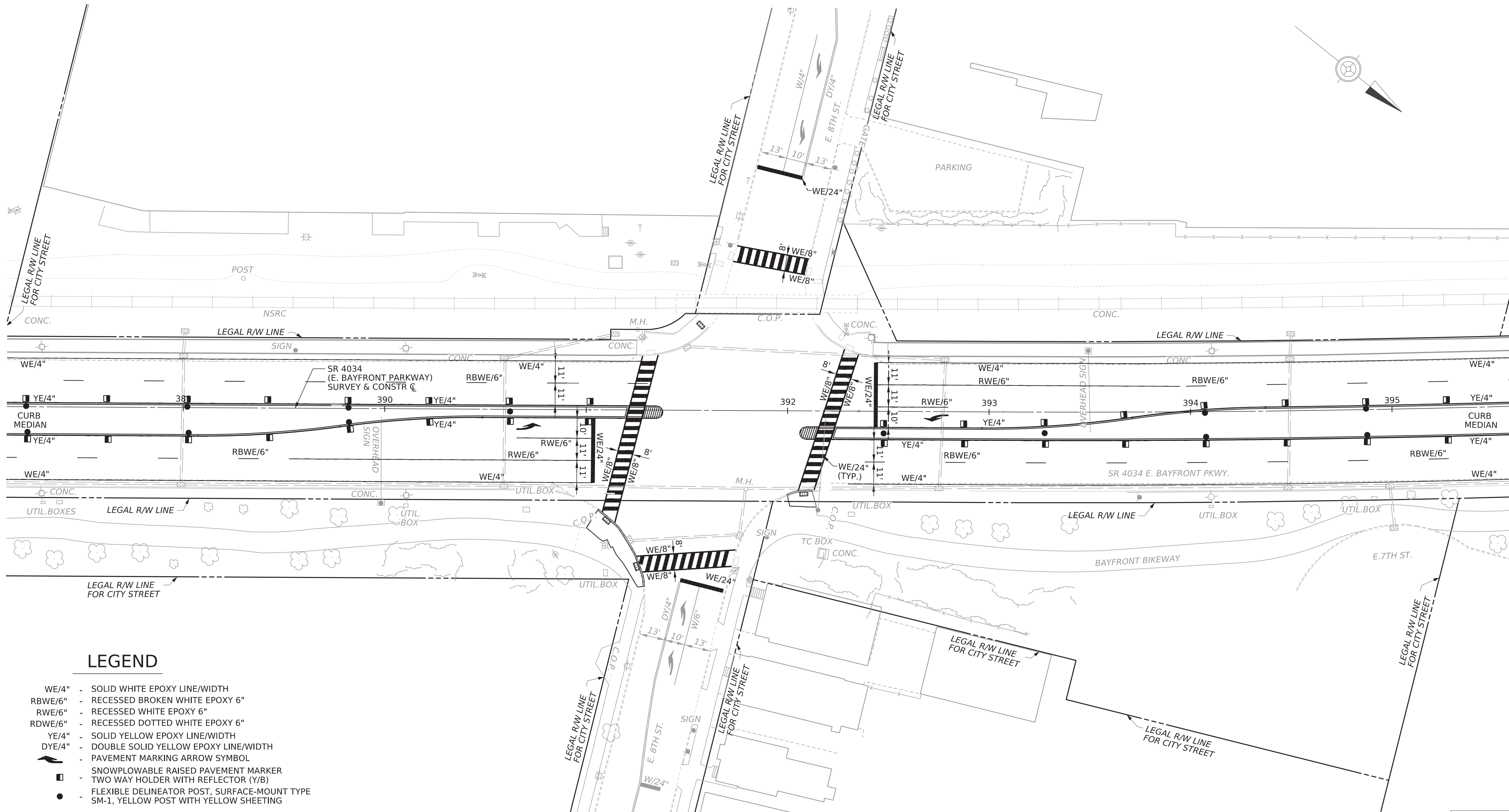
LEGEND

- WE/4" - SOLID WHITE EPOXY LINE/WIDTH
- RBWE/6" - RECESSED BROKEN WHITE EPOXY 6"
- RWE/6" - RECESSED WHITE EPOXY 6"
- RDWE/6" - RECESSED DOTTED WHITE EPOXY 6"
- YE/4" - SOLID YELLOW EPOXY LINE/WIDTH
- DYE/4" - DOUBLE SOLID YELLOW EPOXY LINE/WIDTH
- PAVEMENT MARKING ARROW SYMBOL
- SNOWPLOWABLE RAISED PAVEMENT MARKER
- TWO WAY HOLDER WITH REFLECTOR (Y/B)
- FLEXIBLE DELINEATOR POST, SURFACE-MOUNT TYPE
- SM-1, YELLOW POST WITH YELLOW SHEETING

PAVEMENT MARKING PLAN



DISTRICT	COUNTY	ROUTE	SECTION	SHEET
1-0	ERIE	4034	500	8 OF 12
CITY OF ERIE				
REV NO	REVISIONS		DATE	BY APPD



SEE SHEET 7 OF 12

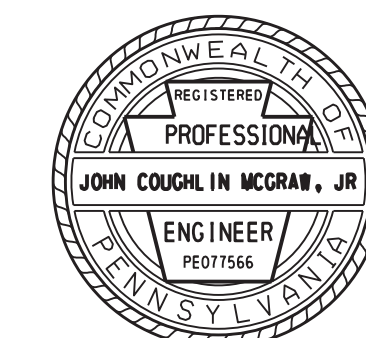
SEE SHEET 9 OF 12

LEGEND

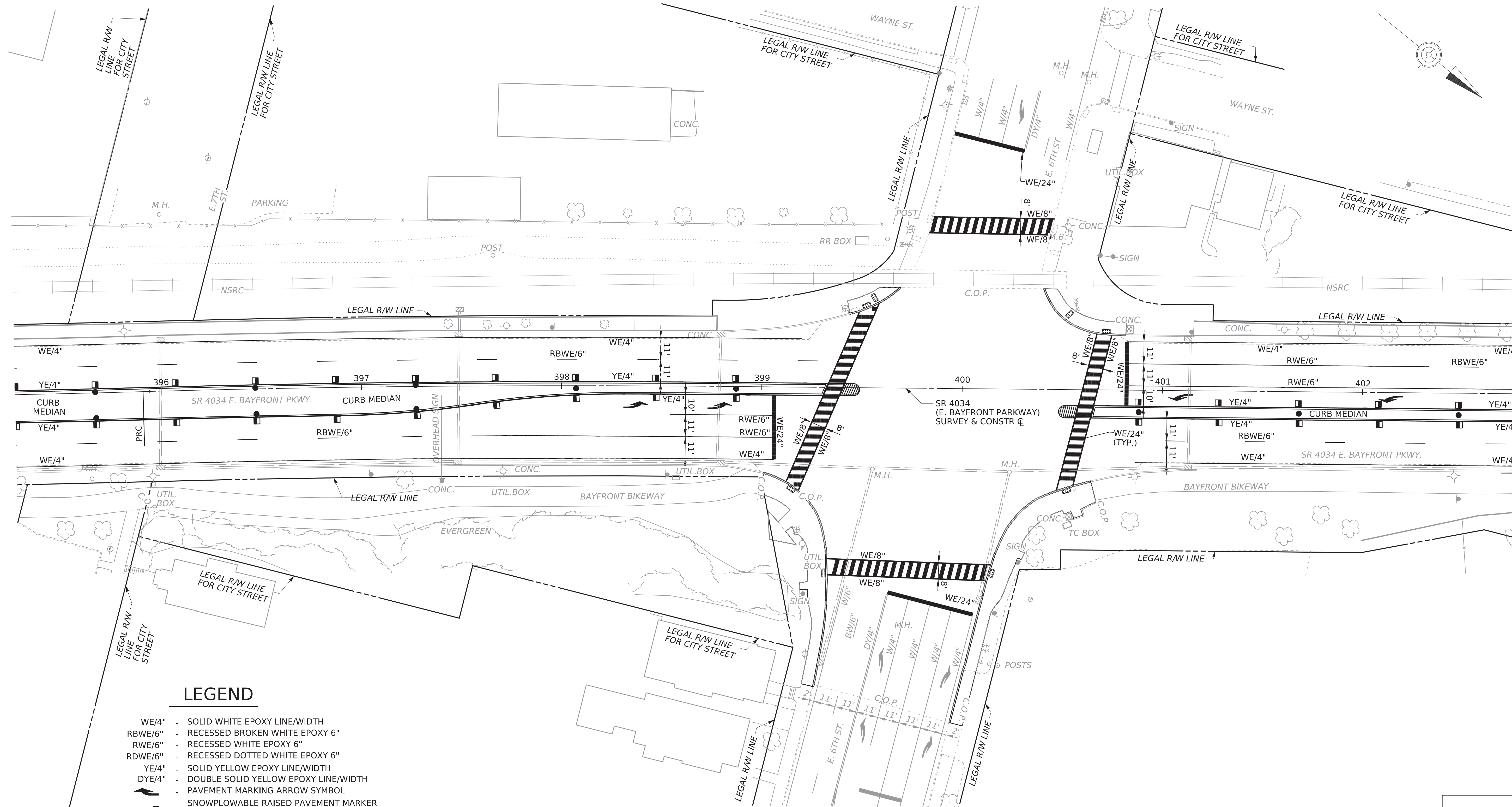
- WE/4" - SOLID WHITE EPOXY LINE/WIDTH
- RBWE/6" - RECESSED BROKEN WHITE EPOXY 6"
- RWE/6" - RECESSED WHITE EPOXY 6"
- RDWE/6" - RECESSED DOTTED WHITE EPOXY 6"
- YE/4" - SOLID YELLOW EPOXY LINE/WIDTH
- DYE/4" - DOUBLE SOLID YELLOW EPOXY LINE/WIDTH
- PAVEMENT MARKING ARROW SYMBOL
- SNOWPLOWABLE RAISED PAVEMENT MARKER
- TWO WAY HOLDER WITH REFLECTOR (Y/B)
- FLEXIBLE DELINEATOR POST, SURFACE-MOUNT TYPE
- SM-1, YELLOW POST WITH YELLOW SHEETING

PAVEMENT MARKING PLAN

SCALE



DISTRICT	COUNTY	ROUTE	SECTION	SHEET
1-0	ERIE	4034	500	9 OF 12
CITY OF ERIE				
REV NO	REVISIONS		DATE	BY APPD



SEE SHEET 8 OF 12

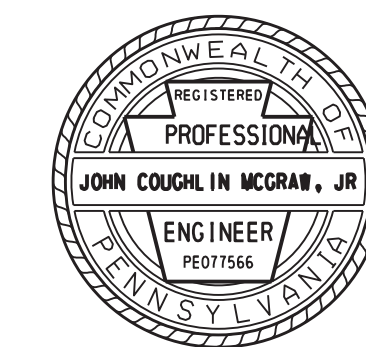
SEE SHEET 10 OF 12

LEGEND

- WE/4" - SOLID WHITE EPOXY LINE/WIDTH
- RBWE/6" - RECESSED BROKEN WHITE EPOXY 6"
- RWE/6" - RECESSED WHITE EPOXY 6"
- RDWE/6" - RECESSED DOTTED WHITE EPOXY 6"
- YE/4" - SOLID YELLOW EPOXY LINE/WIDTH
- DYE/4" - DOUBLE SOLID YELLOW EPOXY LINE/WIDTH
- PAVEMENT MARKING ARROW SYMBOL
- SNOWPLOWABLE RAISED PAVEMENT MARKER
- TWO WAY HOLDER WITH REFLECTOR (Y/B)
- FLEXIBLE DELINEATOR POST, SURFACE-MOUNT TYPE SM-1, YELLOW POST WITH YELLOW SHEETING

PAVEMENT MARKING PLAN

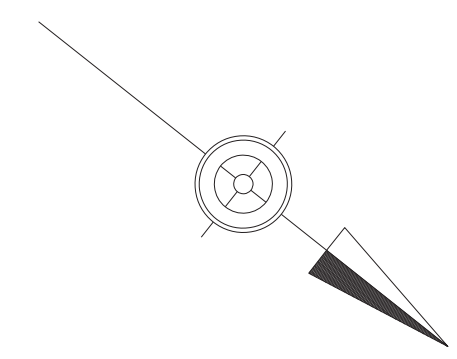
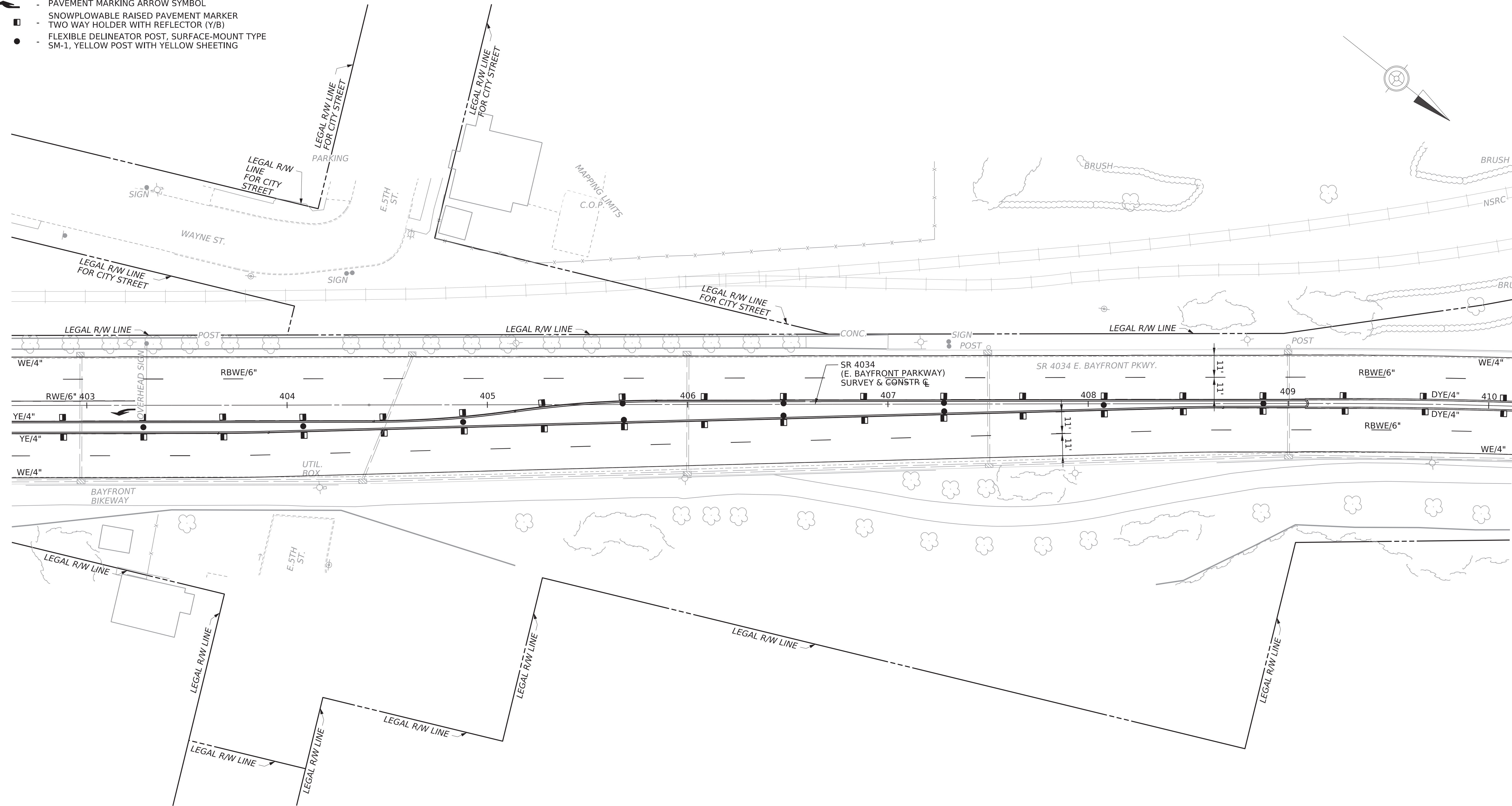
SCALE



DISTRICT	COUNTY	ROUTE	SECTION	SHEET
1-0	ERIE	4034	500	10 OF 12
CITY OF ERIE				
REV NO	REVISIONS	DATE	BY	APPD

LEGEND

- WE/4" - SOLID WHITE EPOXY LINE/WIDTH
- RBWE/6" - RECESSED BROKEN WHITE EPOXY 6"
- RWE/6" - RECESSED WHITE EPOXY 6"
- RDWE/6" - RECESSED DOTTED WHITE EPOXY 6"
- YE/4" - SOLID YELLOW EPOXY LINE/WIDTH
- DYE/4" - DOUBLE SOLID YELLOW EPOXY LINE/WIDTH
- PAVEMENT MARKING ARROW SYMBOL
- SNOWPLOWABLE RAISED PAVEMENT MARKER
- TWO WAY HOLDER WITH REFLECTOR (Y/B)
- FLEXIBLE DELINEATOR POST, SURFACE-MOUNT TYPE
- SM-1, YELLOW POST WITH YELLOW SHEETING

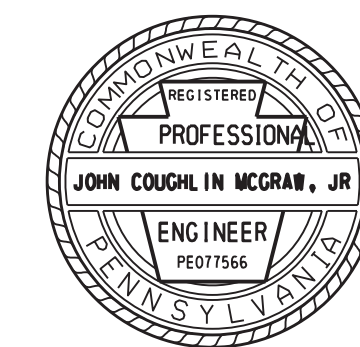


SEE SHEET 9 OF 12

SEE SHEET 11 OF 12






PAVEMENT MARKING PLAN

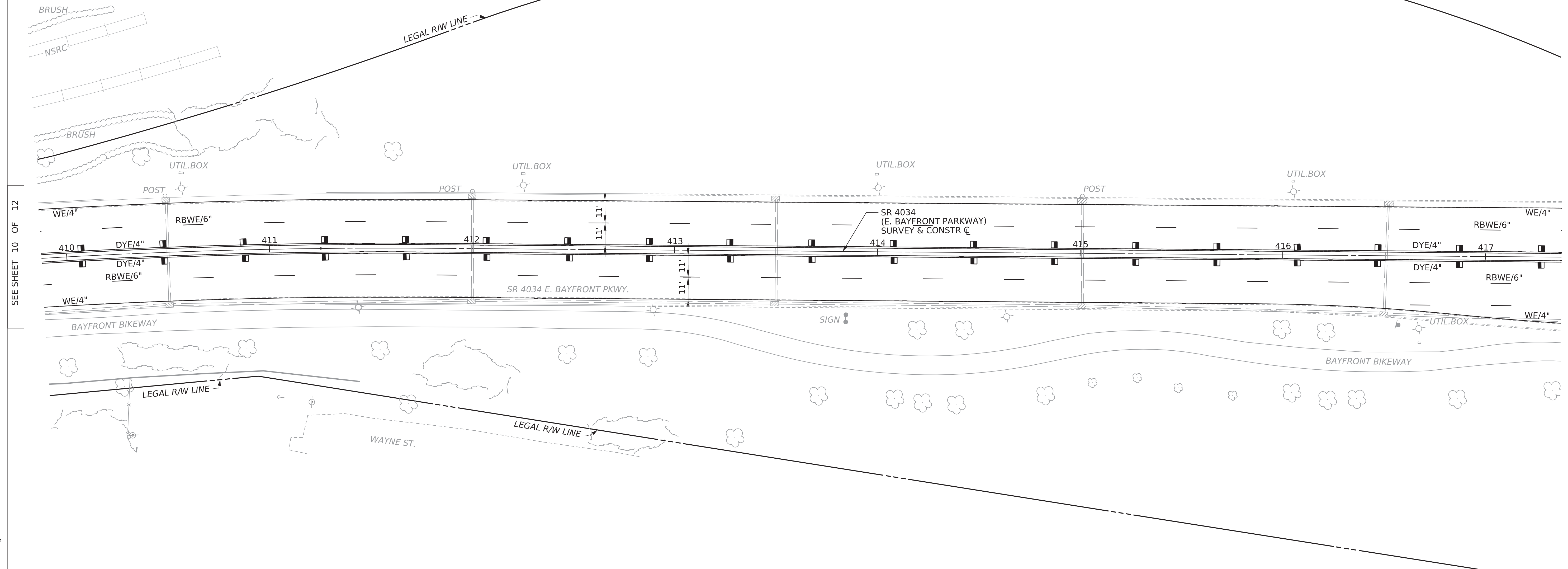
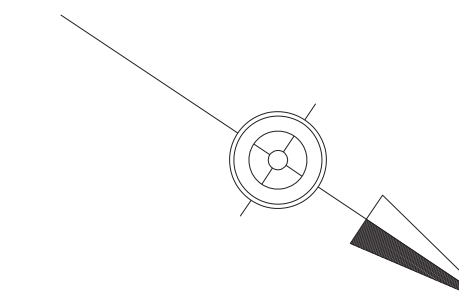
SCALE



DISTRICT	COUNTY	ROUTE	SECTION	SHEET
1-0	ERIE	4034	500	11 OF 12
CITY OF ERIE				
REV NO	REVISIONS	DATE	BY	APPD

LEGEND

- WE/4" - SOLID WHITE EPOXY LINE/WIDTH
- RBWE/6" - RECESSED BROKEN WHITE EPOXY 6"
- RWE/6" - RECESSED WHITE EPOXY 6"
- RDWE/6" - RECESSED DOTTED WHITE EPOXY 6"
- YE/4" - SOLID YELLOW EPOXY LINE/WIDTH
- DYE/4" - DOUBLE SOLID YELLOW EPOXY LINE/WIDTH
-  - PAVEMENT MARKING ARROW SYMBOL
-  - SNOWPLOWABLE RAISED PAVEMENT MARKER
-  - TWO WAY HOLDER WITH REFLECTOR (Y/B)
-  - FLEXIBLE DELINEATOR POST, SURFACE-MOUNT TYPE
-  - SM-1, YELLOW POST WITH YELLOW SHEETING



SEE SHEET 10 OF 12

SEE SHEET 12 OF 12

PAVEMENT MARKING PLAN

